

**INSTRUMENT APPROACH
CHART (IAC)**

CAMPINAS / Viracopos, INTL (SBKP)

AD ELEV: 2170'

RNP Y RWY 15 (AR)

D-ATIS 127.825	APP SÃO PAULO 119.05 119.15 119.25 119.60 119.80 120.05 120.25 120.45 120.85 121.40 122.75 123.25 124.15	TWR CAMPINAS 118.25	GNDC CAMPINAS 121.90
--------------------------	--	-------------------------------	--------------------------------

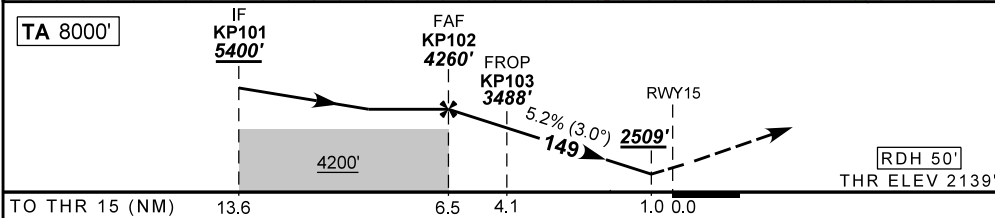
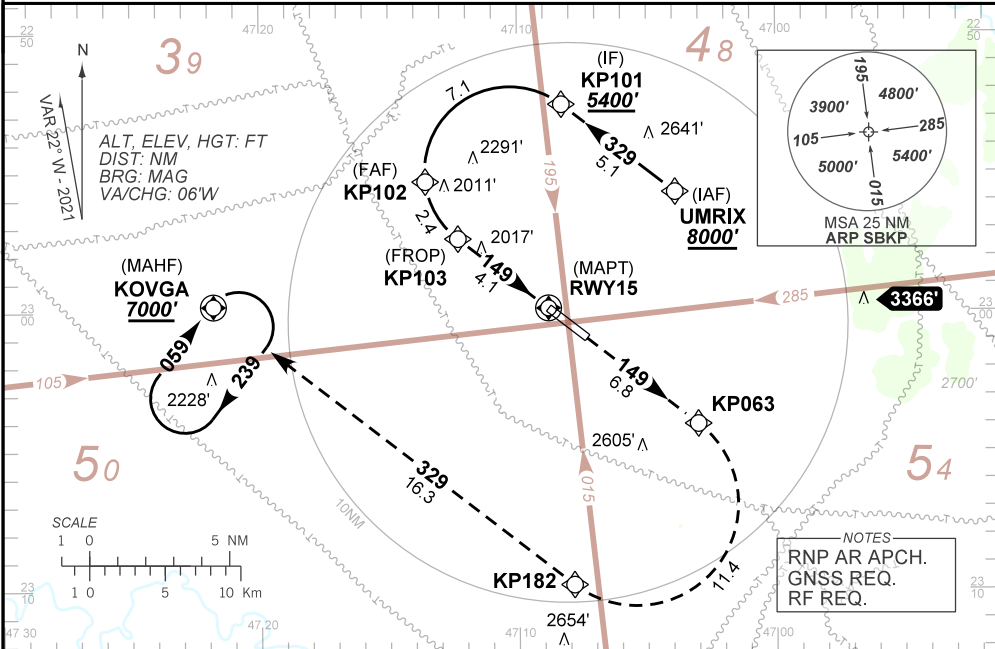
TEMP LNAV/VNAV MIN -10°C / MAX 45°C	FINAL CRS 149°	FAF: 4260'	RNP 0.3 DA / (OCH): 2509' / (370')	N/A
---	--------------------------	----------------------	--	------------

APCH Perdida: 1) Subir para **7000'**. Manter rumo **149** até KP063. Após, curvar à DIREITA até KP182.

Após, rumo **329** até KOVGA para espera. 2) IAS MAX 190KT até KP182.

Missed APCH: 1) Climb to **7000'**. Maintain course **149** until KP063. After, turn RIGHT until KP182. After, course **329** until KOVGA for holding. 2) IAS MAX 190KT until KP182.

DEPARTAMENTO DE CONTROLE DE ESPAÇO AÉREO



KP102	5.0	KP103	3.0	2.0	1.0	RWY15	Ground Speed (KT)	090	110	130	150	170	190
4260	3781	3488	3144	2826	2509	ALT	FPM	500	600	700	800	900	NA
2121	1642	1349	1005	687	370	(HGT)	FAF-MAPT	NA					

STRAIGHT-IN	CAT	A	B	C	D	E
	DA / (OCH)	2509' / (370')				
RNP 0.3	ALS/NO ALS/ RVR ALS (m)	1000 / 1700 / NIL				
		NA				

**AUTORIZAÇÃO ESPECIAL PARA AERONAVE E TRIPULAÇÃO REQUERIDA
SPECIAL AUTHORIZATION FOR AIRCRAFT AND CREW REQUIRED**

Aprovação Específica
(ANAC IS 91.001)
Specific Approval
(ANAC IS 91.001)



CODING TABLE

IAC RNP Y RWY 15 (AR)					CAMPINAS / Viracopos, INTL (SBKP)							SBKP_IAC_01R		15 JUL 2021	
Seq Num	Transition Identifier	Fly Over	Rec Navaid	Fix Ident	Path and Terminator	Course Angle	Turn	Upper Limit Altitude (FT)	Lower Limit Altitude (FT)	Speed Limit (KT)	Speed Limit Description	TM DST (NM)	VA (°)	Role of the Fix	Navigation Specification
10	APCH	N/A	N/A	UMRIX	IF	N/A	N/A	N/A	+8000	N/A	N/A	N/A	N/A	IAF	RNP 1
20	APCH	N	N/A	KP101	TF	329.19° Mag / 307.70° True	N/A	N/A	+5400	N/A	N/A	5.13	N/A	IF	RNP 1
10	FINAL	N/A	N/A	KP101	IF	N/A	N/A	N/A	+5400	N/A	N/A	N/A	N/A	IF	RNP 1
20	FINAL	N/A	N/A	KP102	RF	N/A	L	N/A	R4260	N/A	N/A	7.12	N/A	FAF	RNP 1
N/A	N/A	N/A	N/A	KP105*	N/A	N/A	N/A	N/A	N/A	N/A	N/A	ARC RADIUS 3.04	N/A	N/A	N/A
30	FINAL	N/A	N/A	KP103	RF	N/A	L	N/A	R3488	N/A	N/A	2.41	-3.00	FROP	RNP 0.3
N/A	N/A	N/A	N/A	KP105*	N/A	N/A	N/A	N/A	N/A	N/A	N/A	ARC RADIUS 3.04	N/A	N/A	N/A
40	FINAL	Y	N/A	RWY15	TF	149.18° Mag / 127.75° True	N/A	N/A	@2189	N/A	N/A	4.08	-3.00	LTP	RNP 0.3
10	MA	N	N/A	KP063	TF	149.23° Mag / 127.78° True	N/A	N/A	N/A	N/A	N/A	6.76	N/A	OTHER	RNP 1
20	MA	N/A	N/A	KP182	RF	N/A	R	N/A	N/A	190	-	11.43	N/A	OTHER	RNP 1
N/A	N/A	N/A	N/A	KP181*	N/A	N/A	N/A	N/A	N/A	N/A	N/A	ARC RADIUS 3.64	N/A	N/A	N/A
30	MA	Y	N/A	KOVGA	TF	329.21° Mag / 307.79° True	N/A	N/A	+7000	N/A	N/A	16.28	N/A	MAHF	RNP 1
40	MA	Y	N/A	KOVGA	HM	59.15° Mag / 37.80° True	R	N/A	+7000	N/A	N/A	1.00 min	N/A	MAHF	RNP 1

*Fictitious point: only for coding purposes.

Ident	Latitude / Longitude (WGS84) DD:MM:SS.SS
KP101	S 22:52:35.07W 47:08:17.49
KP102	S 22:55:20.94W 47:13:34.16
KP105	S 22:54:59.62W 47:10:18.21
KP103	S 22:57:24.14W 47:12:19.00
KP063	S 23:04:03.54W 47:03:01.85
KP182	S 23:09:49.75W 47:07:51.87
KP181	S 23:06:56.66W 47:05:26.81
KOVGA	S 22:59:48.60W 47:21:48.60
UMRIX	S 22:55:43.80W 47:03:54.00
RWY15	S 22:59:53.48W 47:08:49.21

COD	Meaning
+	AT OR ABOVE
-	AT OR BELOW
@	AT
R	RECOMMENDED
B	BETWEEN
=	AS ASSIGNED
SDF	STEPDOWN FIX
Y	YES
N	NO
L	LEFT
R	RIGHT
N/A	NOT APPLICABLE
FROP	FINAL APPROACH ROLLOUT POINT
LTP	LANDING THRESHOLD POINT
FTP	FICTITIOUS THRESHOLD POINT

MISSED APPROACH SEGMENT																
Track	Bank Angle(°)		TWC (KT)		IAS (KT)		D_{MASRNP} (NM)		TrD (NM)		Gradient (%)		RNP (NM)		TP Altitude (FT)	
	Used /	STD	Used /	STD	Used /	STD	Used /	STD	Used /	STD	Used /	STD	Used /	STD	Used /	STD
ALL PARAMETERS ARE ACCORDING TO ICAO DOCUMENTS																

COD	Meaning
STD	Value according to ICAO Documents
TWC	Tail Wind Component
IAS	Indicated Air Speed
D _{frop}	Distance FROP-THEL
FROP	Final Roll-Out Point
TrD	Track Distance (Needed to comply turns)
TP Altitude	Turning Point Altitude
THEL	Threshold elevation
D _{MASRNP}	Maximum distance of RNP navigation accuracy (requirement less than 1.0 NM in the missed approach)