

INSTRUMENT APPROACH
CHART (IAC)

Vitória da Conquista / Glauber de Andrade Rocha (SSVC)

RNAV(GNSS) RWY 33

AD ELEV: 2934'

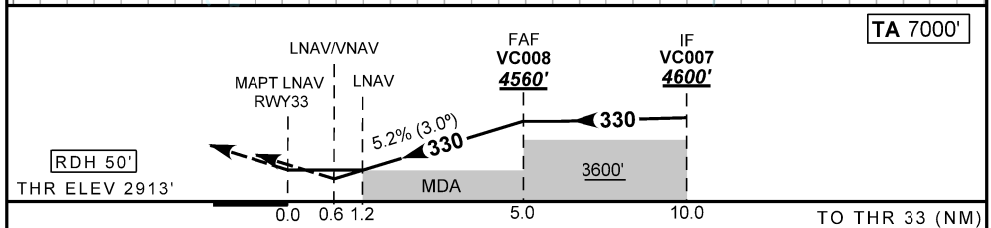
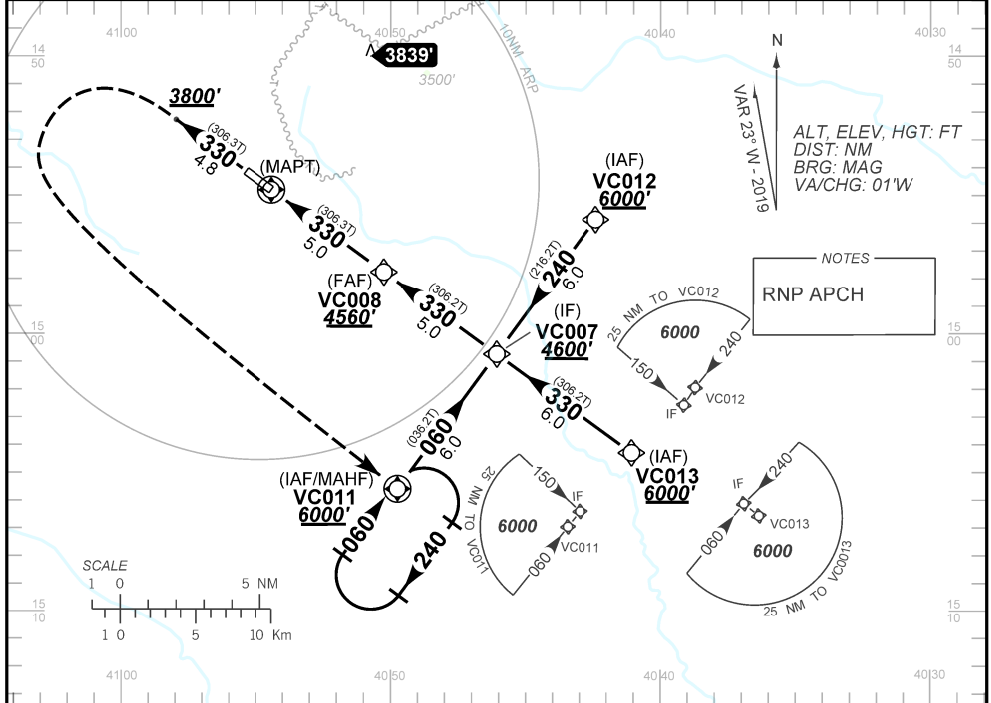
ATIS NIL	APP NIL	AFIS CONQUISTA 130.30	GNDC NIL
N/A	FINAL CRS 330°	FAF 4560'	LNAV MDA / (OCH): 3340' / (430')
		LNAV/VNAV DA / (OCH): 3163' / (250')	

APCH Perdida: Subir para **6000'** no rumo **330'**. Após **3300'**, curvar à ESQUERDA direto VC011 para espera.

Missed APCH: Climb to **6000'** on course **330'**. After **3300'**, turn LEFT direct to VC011 for holding.

RMK: 1) Para sistemas não compensados Baro-VNAV, LNAV/VNAV NÃO AUTORIZADO abaixo de 0°C.

For uncompensated systems Baro-VNAV, LNAV/VNAV NOT AUTHORIZED below 0°C.



RWY33	1.0	2.0	3.0	4.0	FAF		KT	090	110	130	150	170	190
ALT	3280	3600	3920	4240	4560		FPM	500	600	700	800	900	NA
(HGT)	370	690	1010	1330	1640		FAF-MAPT	NA					

STRAIGHT-IN	CAT	A	B	C	D	E
LNAV/VNAV	DA / OCH	3163' / (250')				NA
	ALS/NO ALS/ RVR ALS (m)	NIL / 1300 / NIL				
LNAV	MDA / OCH	3340' / (430')				
	ALS/NO ALS/RVR ALS (m)	NIL / 1600 / NIL		NIL / 2000 / NIL		
CIRCLING	MDA / OCH	NA				
	VIS (m)					

CHANGES NEW CHART

INTENCIONALMENTE EM BRANCO
INTENTIONALLY LEFT BLANK