

**INSTRUMENT APPROACH  
CHART (IAC)**

**SÃO PAULO / Guarulhos - Gov. André Franco Montoro, INTL (SBGR)**

**AD ELEV: 2461'**

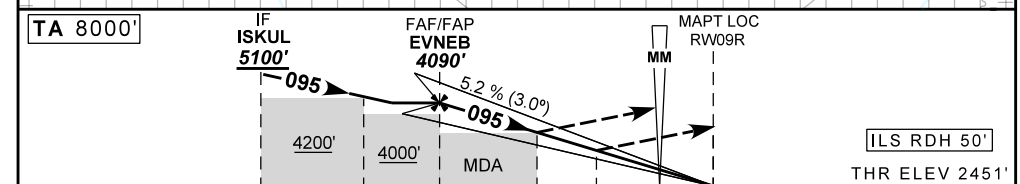
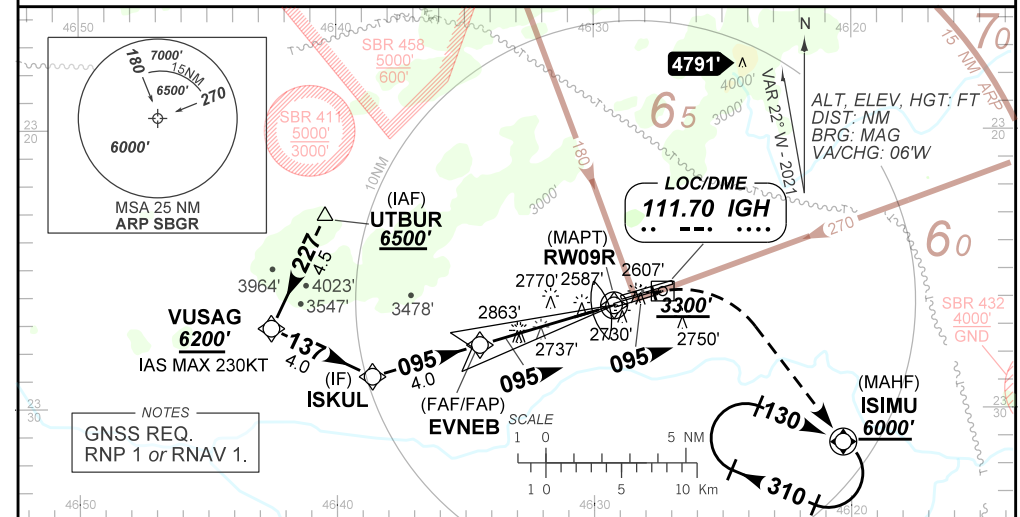
**ILS R ou/or LOC R RWY 09R**

D-ATIS <b>127.75</b>		APP SÃO PAULO <b>129.75 119.15 120.45 120.85 133.85</b>			TWR GUARULHOS <b>118.40 132.75 135.20</b>		GNDC GUARULHOS <b>121.70 126.90</b>	
LOC IGH <b>111.70 MHz</b>	FINAL CRS <b>095°</b>	FAF: <b>4090'</b>	CAT I: <b>DA / (OCH): 3000' / (549')</b>		LOC only: <b>MDA / (OCH): 3300' / (850')</b>			

APCH Perdida: Subir para **6000'**. Manter rumo **095'**. Após cruzar **3300'**, curvar imediatamente à DIREITA direto ISIMU para espera.  
Missed APCH: Climb to **6000'**. Maintain course **095'**. After passing **3300'**, turn RIGHT immediately direct to ISIMU for holding

RMK: 1) Operação Segregada em curso. 2) INFO complementares no verso.  
1) Segregated operation in progress. 2) See reverse side for additional INFO.

ARREMETIDA VISUAL RWY 09L: Subir para **6500'**. Manter proa **095'**. Aguardar instruções ATC.  
VISUAL GO AROUND RWY 09L: Climb to **6500'**. Maintain heading **095'**. Expect ATC instructions.



TO THR 09R (NM)	9.0	7.0	5.0	2.6	1.6	0.5	0.0
TO IGH DME	9.2	7.2	5.2	2.8	1.8	0.7	0.2

	EVNEB	4.0	3.0	2.6	RW09R	KT	90	110	130	150	170	190
	4090	3776	3457	3300	ALT	FPM	500	600	700	800	900	1000
	1639	1325	1006	850	(HGT)	FAF-MAPT	NA					

STRAIGHT-IN	CAT	A	B	C	D	E
	DA / (OCH)	3000' / (549')				
LOC	ALS/NO ALS/ RVR ALS (m)	1800 / 2500 / 1700				
	MDA / (OCH)	3300' / (850')				
CIRCLING	ALS/NO ALS/ RVR ALS (m)	3100 / 3800 / NIL				
	MDA / (OCH)	NA				
	VIS (m)					

CHANGES: NEW CHART.

DEPARTAMENTO DE CONTROLE DO ESPAÇO AÉREO

**OPERAÇÕES SEGREGADAS VISUAIS PARA O AEROPORTO  
INTERNACIONAL DE GUARULHOS (SBGR)**

**1 - SEPARAÇÃO VISUAL**

- 1.1 A separação visual pode ser utilizada desde que outro método de separação possa ser assegurado antes e após a sua aplicação.
- 1.2 Para a utilização da separação visual, o piloto em comando deve observar os seguintes procedimentos:
- a) No caso de arremetida, manter a separação visual com a aeronave decolando da pista paralela até que seja iniciada a curva prevista na aproximação perdida.
  - b) Reportar à TWR, caso não se encontre visual ao cruzar 3.400 pés na final; e
  - c) Observar a possibilidade de esteira de turbulência ao ser instruído a manter a separação visual;

**2 - APROXIMAÇÃO PARA A RWY 09L PARALELA**

- 2.1 - O ATC poderá, eventualmente, autorizar uma aproximação visual para a RWY 09L paralela durante as operações segregadas visuais.

**SEGREGATED VISUAL OPERATION AT  
GUARULHOS INTERNATIONAL AIRPORT (SBGR)**

**1 - VISUAL SEPARATION**

- 1.1 Visual separation can be applied since another separation method may be assured before and after its application.
- 1.2 For applying visual separation, the pilot-in-command must observe the following procedures:
- a) In case of GO AROUND, maintain visual separation with the aircraft taking off from the parallel runway until start the predicted curve on the missed approach.
  - b) Advise the TWR if do not get visual after passing 3400' on final.
  - c) Observe wake turbulence separation, when instructed to maintain visual separation.

**1 - RWY 09L PARALLEL APPROACH**

- 2.1 ATC may possibly authorize a visual approach to parallel RWY 09L during visual segregated operations.



## CODING TABLE

IAC ILS R ou/or LOC R RWY 09R					SÃO PAULO / Guarulhos – Gov. André Franco Montoro, INTL (SBGR)							SBGR_IAC_04A	25 FEB 21		
Seq Num	Transition Identifier	Fly Over	Rec Navaid	Fix Ident	Path and Terminator	Course Angle	Turn	Upper Limit Altitude (FT)	Lower Limit Altitude (FT)	Speed Limit (KT)	Speed Limit Description	TM DST (NM)	VA (°)	Role of the Fix	Navigation Specification
10	APCH	N	N/A	UTBUR	IF	N/A	N/A	N/A	+6500	N/A	N/A	N/A	N/A	IAF	RNAV 1 OU RNP 1
20	APCH	N	N/A	VUSAG	TF	227.20° Mag 205.64° True	N/A	N/A	+6200	230	-	4.47	N/A	OTHER	RNAV 1 OU RNP 1
30	APCH	N	N/A	ISKUL	TF	137.20° Mag 115.62° True	N/A	N/A	+5100	N/A	N/A	4.00	N/A	IF	RNAV 1 OU RNP 1
40	APCH	N	N/A	EVNEB	TF	95.34° Mag 73.72° True	N/A	N/A	R4090	N/A	N/A	3.96	N/A	FAF	RNAV 1 OU RNP 1
10	FINAL	N	N/A	EVNEB	IF	N/A	N/A	N/A	R4090	N/A	N/A	N/A	N/A	FAF	---
20	FINAL	Y	IGH	RW09R	CF	95.35° Mag 73.69° True	N/A	N/A	@2501	N/A	N/A	5.00	-3.00	LTP/FTP	---
10	MA	N	N/A	ISIMU	VA	95.35° Mag 73.69° True	N/A	N/A	+3300	N/A	N/A	N/A	N/A	N/A	RNAV 1 OU RNP 1
20	MA	Y	N/A	ISIMU	DF	N/A	R	N/A	+6000	N/A	N/A	N/A	N/A	MAHF	RNAV 1 OU RNP 1
30	MA	Y	N/A	ISIMU	HM	130.00° Mag 108.29° True	R	N/A	+6000	N/A	N/A	1.00 min	N/A	MAHF	RNAV 1 OU RNP 1

Ident	Latitude / Longitude (WGS84) DD:MM:SS.SS
UTBUR	S 23:23:04.74W 46:40:26.53
VUSAG	S 23:27:07.26W 46:42:32.64
ISKUL	S 23:28:51.53W 46:38:37.05
EVNEB	S 23:27:43.88W 46:34:24.25
IGH	S 23:25:48.94W 46:27:19.51
ISIMU	S 23:31:14.03W 46:20:19.45
RW09R	S 23:26:19.67 W 46:29:13.30

COD	Meaning
+	AT OR ABOVE
-	AT OR BELOW
@	AT
R	RECOMMENDED
B	BETWEEN
=	AS ASSIGNED
SDF	STEPDOWN FIX
Y	YES
N	NO
L	LEFT
R	RIGHT