

**INSTRUMENT APPROACH CHART (IAC)**

**SALVADOR / Deputado Luís Eduardo Magalhães, INTL (SBSV)**

**RNAV(GNSS) 167**

**AD ELEV: 66'**

D-ATIS <b>127.75</b>	APP SALVADOR <b>119.35 119.80 120.80 129.45</b>	TWR SALVADOR <b>118.30 118.60 118.95 121.10 121.50</b>	GNDC SALVADOR <b>121.90</b>
-------------------------	--	---	--------------------------------

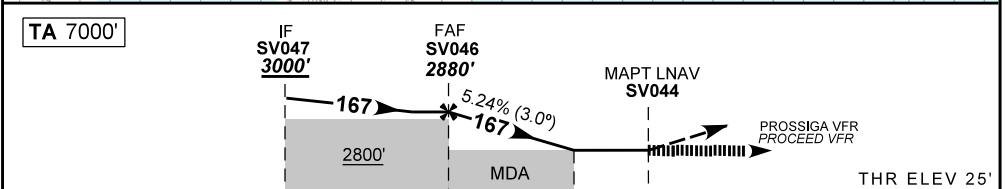
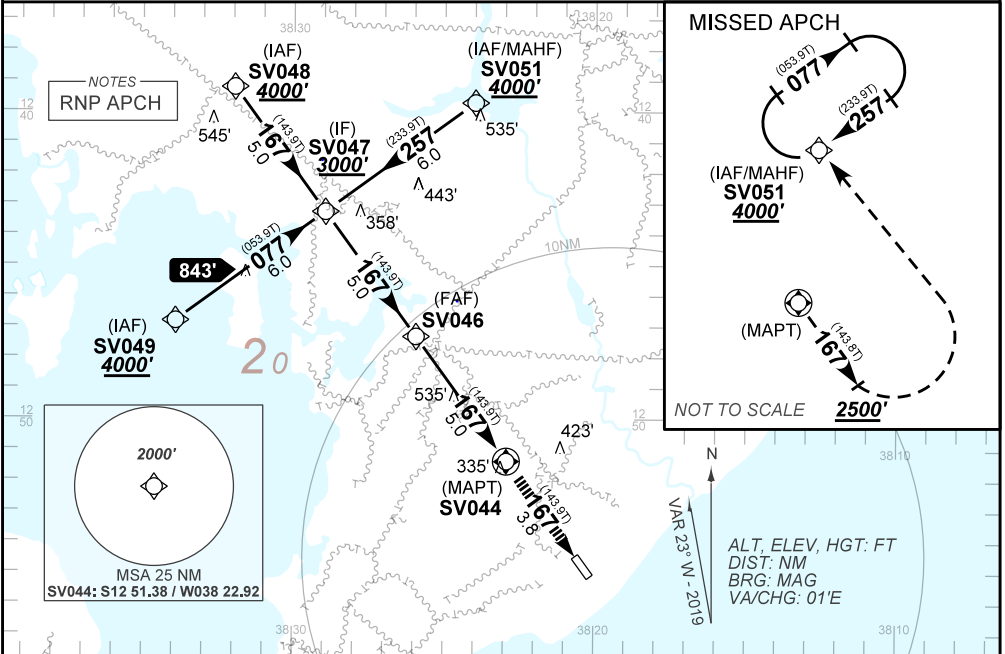
N/A	FINAL CRS <b>167°</b>	FAF <b>2880'</b>	N/A	LNAV MDA / (OCH): <b>1500' / (1440')</b>
-----	--------------------------	---------------------	-----	---

APCH Perdida: Subir para **4000'**. Manter rumo **167°** até cruzar **2500'**. Então, curvar à ESQUERDA direto SV051 para espera.

Missed APCH: Climb to **4000'**. Maintain course **167°** until passing **2500'**. Then, turn LEFT direct to SV051 for holding.

RMK: 1) Procedimento aplicável somente para operação VFR em SBSV. 2) Requerido FPL "Y" com mudança de regra de voo no MAPT. 3) Prosseguir VFR a partir do MAPT ou efetuar aproximação perdida.

1) Procedure applicable only for VFR operation in SBSV. 2) FPL "Y" required with flight rules change to VFR at MAPT. 3) Proceed VFR from MAPT or make MISSED APPROACH PROCEDURE.



TO THR 17 (NM)	13.8	8.8	4.5	3.8	0.0
TO MAPT (NM)	10.0	5.0	0.7	0.0	0.0

	SV046	4.0	3.0	2.0	0.7	MAPT	KT	090	110	130	150	170	190	
	2880	2558	2240	1922	1500	ALT	FPM	500	600	700	800	900	NA	
	NIL						(HGT)	FAF-MAPT	NA					

STRAIGHT-IN	CAT	A	B	C	D	E
LNAV	MDA / (OCH)	1500' / (1440')				NA
	ALS/NO ALS/RVR ALS (m)	5000				

CHANGES: NEW CHART



## CODING TABLE

IAC RNAV (GNSS) 167					SALVADOR / Deputado Luís Eduardo Magalhães, INTL (SBSV)							SBSV_IAC_03F		23 MAY 19 TIL 10 OCT 19	
Seq Num	Transition Identifier	Fly Over	Rec Navaid	Fix Ident	Path and Terminator	Course Angle	Turn	Upper Limit Altitude (FT)	Lower Limit Altitude (FT)	Speed Limit (KT)	Speed Limit Description	TM DST	VA (°)	Role of the Fix	Navigation Specification
10	APCH	N/A	N/A	SV048	IF	N/A	N/A	N/A	+4000	N/A	N/A	N/A	N/A	IAF	RNP APCH
20	APCH	N	N/A	SV047	TF	167.29° Mag 143.88° True	N/A	N/A	+3000	N/A	N/A	5.00	N/A	IF	RNP APCH
10	APCH	N/A	N/A	SV049	IF	N/A	N/A	N/A	+4000	N/A	N/A	N/A	N/A	IAF	RNP APCH
20	APCH	N	N/A	SV047	TF	77.29° Mag 53.88° True	N/A	N/A	+3000	N/A	N/A	6.00	N/A	IF	RNP APCH
10	APCH	N/A	N/A	SV051	IF	N/A	N/A	N/A	+4000	N/A	N/A	N/A	N/A	IAF	RNP APCH
20	APCH	N	N/A	SV047	TF	257.29° Mag 233.88° True	N/A	N/A	+3000	N/A	N/A	6.00	N/A	IF	RNP APCH
10	FINAL	N/A	N/A	SV047	IF	N/A	N/A	N/A	+3000	N/A	N/A	N/A	N/A	IF	RNP APCH
20	FINAL	N	N/A	SV046	TF	167.30° Mag 143.87° True	N/A	N/A	+2880	N/A	N/A	5.00	N/A	FAF	RNP APCH
30	FINAL	Y	N/A	SV044	TF	167.30° Mag 143.86° True	N/A	N/A	+1287	N/A	N/A	5.00	-3.00	MAPT	RNP APCH
10	MA	N/A	N/A	N/A	CA	167.30° Mag 143.85° True	N/A	N/A	+2500	N/A	N/A	N/A	1.43	N/A	RNP APCH
20	MA	Y	N/A	SV051	DF	N/A	L	N/A	+4000	N/A	N/A	N/A	1.43	MAHF	RNP APCH
30	MA	Y	N/A	SV051	HM	257.29° Mag 233.88° True	R	N/A	+4000	N/A	N/A	N/A	N/A	MAHF	RNP APCH

Ident	Latitude / Longitude (WGS84) DD:MM:SS.SS
SV044	S 12:51:23.09W 38:22:55.12
SV046	S 12:47:19.73W 38:25:56.21
SV047	S 12:43:16.34W 38:28:57.20
SV048	S 12:39:12.91W 38:31:58.09
SV049	S 12:46:49.44W 38:33:54.81
SV051	S 12:39:43.13W 38:23:59.73
THR17	S 12:54:27.99W 38:20:37.45

COD	Meaning
+	AT OR ABOVE
-	AT OR BELOW
@	AT
R	RECOMMENDED
B	BETWEEN
=	AS ASSIGNED
SDF	STEPPDOWN FIX
Y	YES
N	NO
L	LEFT
R	RIGHT
N/A	NOT APPLICABLE
LTP	LANDING THRESHOLD POINT
FTP	FICTITIOUS THRESHOLD POINT