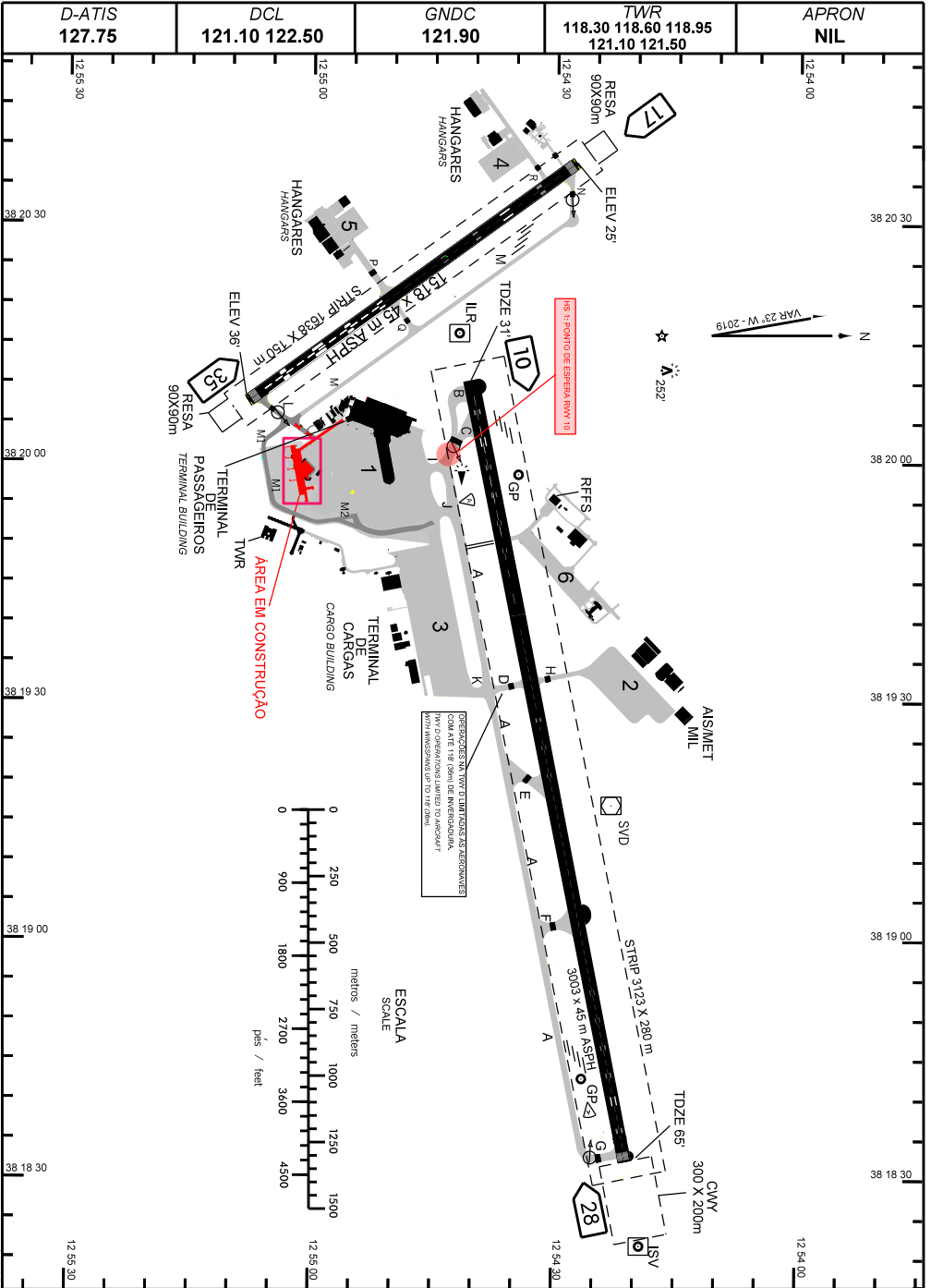
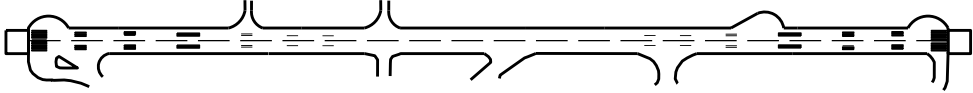
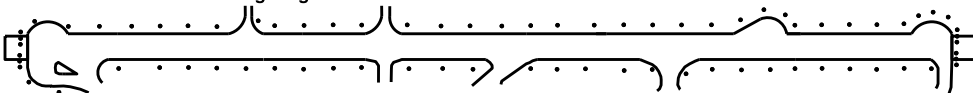
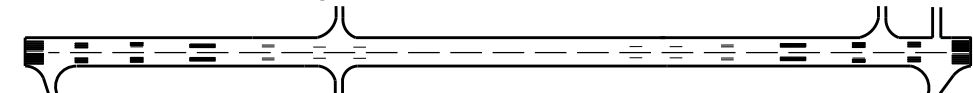
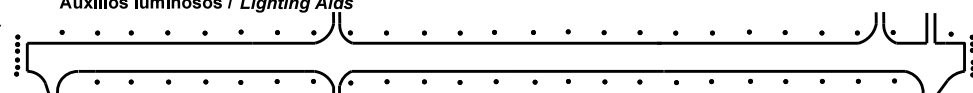


AD ELEV: 66'

ARP S12 54 31 W038 19 21



**ADC - SBSV: INFORMAÇÕES COMPLEMENTARES / COMPLEMENTARY INFORMATION**

CARACTERÍSTICAS FÍSICAS / PHYSICAL CHARACTERISTICS												
PISTA RUNWAY				DIMENSÕES(m) DIMENSIONS(m)					PCN	TIPO DE SUPERFÍCIE SURFACE KIND		
RWY	BRG MAG	Tipo Type	RCD	RWY	SWY	CWY	STRIP	RESA	RWY	RWY	SWY	
a	b	c	d	e	f	g	h	i	j	k	l	
10 28	101 281	PA-1 PA-1	4E 4E	3003 x 45		300 x 200	3123 x 280		104/F/B/X/T	ASPH		
17 35	167 347	NPA NPA	3C 3C	1518 x 45			1638 x 150	90 x 90 90 x 90	45/F/C/X/U	ASPH		
DISTÂNCIAS DECLARADAS, AUXÍLIOS VISUAIS E COORDENADAS DAS CABECEIRAS DECLARED DISTANCES, VISUAL AIDS AND THRESHOLD COORDINATES												
RWY	TORA(m)	TODA(m)	ASDA(m)	LDA(m)	AUXÍLIOS / AIDS	ALTURA GEOIDAL(m) GEOID HEIGHT(m)	COORDENADAS COORDINATES					
10 28	2913 2913	3303 3303	2913 2913	2913 2913	PAPI PAPI	- 10,94m - 10,95m	S12 54 41 W038 20 10 S12 54 21 W038 18 32					
17 35	1518 1518	1518 1518	1518 1518	1518 1518	PAPI (3.50°) PAPI (3.50°)	- 10,94m - 10,95m	S12 54 28 W038 20 37 S12 55 08 W038 20 08					
SERVIÇO DE SALVAMENTO E CONTRAINCÊNDIO / RESCUE AND FIRE FIGHTING SERVICE: RFFS REQ - 10												
RWY 10 / 28												
Sinalização horizontal / Marking Aids												
												
Auxílios luminosos / Lighting Aids												
												
RWY 17 / 35												
Sinalização horizontal / Marking Aids												
												
Auxílios luminosos / Lighting Aids												
												
<b>RMK:</b> 1) MEHT - RWY 10 - 70FT RWY 17 - 40FT RWY 28 - 68 FT  2) TWY LIMA BTN PATIO 1 E TWY MIKE RETIRADO DEVIDO OBRAS DE AMPLIAÇÃO DO TERMINAL DE PASSAGEIROS. TWY LIMA BTN APRON 1 AND TWY MIKE WITHDRAWN DUO WORKS AT THE TERMINAL PASSENGERS.  3) RWY 10 E RWY 28 ULTIMOS 90M CLSD PARA LDG/TKOF DEVIDO PROVIMENTO DE RESA. RWY 10 AND RWY 28 LAST 90M CLSD FOR LDG/TKOF DUO RESA PROVIDE.												

CHANGES: RWY, TWY, HOT SPOT, DIST DECLARADAS, PAPI