

STANDARD DEPARTURE CHART
INSTRUMENT (SID)

NATAL / Campo Augusto Severo, MIL (SBNT)

RWY 12/16L/16R

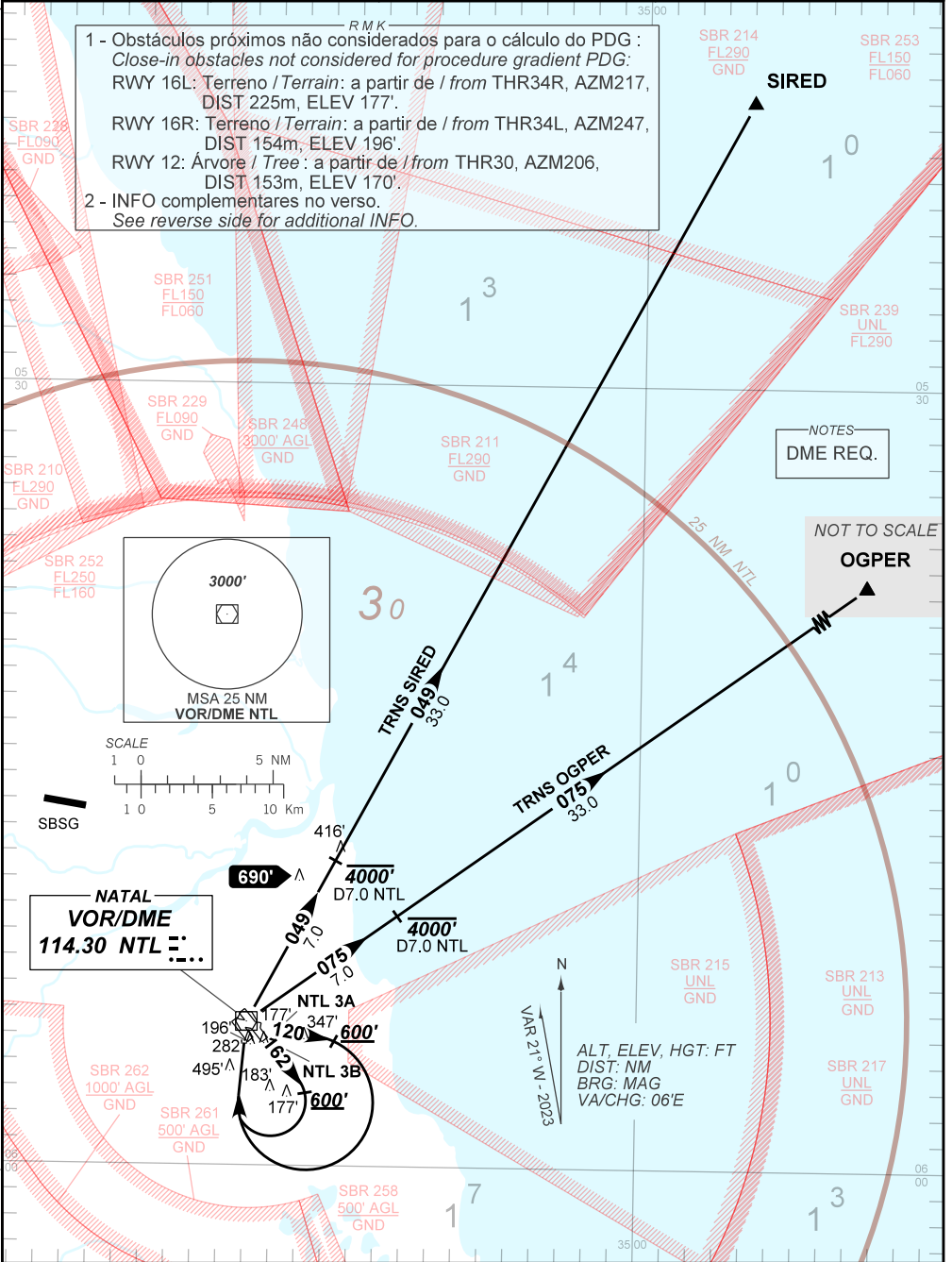
NTL 3A, 3B

AD ELEV: 169'

TA 4000'	D-ATIS 132.65	TWR NATAL 118.70 122.80	APP NATAL 119.30 119.65 120.65 129.80	ACC RECIFE 128.70 134.80
----------	------------------	----------------------------	--	-----------------------------

- 1 - Obstáculos próximos não considerados para o cálculo do PDG :
Close-in obstacles not considered for procedure gradient PDG:
RWY 16L: Terreno / Terrain: a partir de / from THR34R, AZM217, DIST 225m, ELEV 177'.
RWY 16R: Terreno / Terrain: a partir de / from THR34L, AZM247, DIST 154m, ELEV 196'.
RWY 12: Árvore / Tree: a partir de / from THR30, AZM206, DIST 153m, ELEV 170'.
2 - INFO complementares no verso.
See reverse side for additional INFO.

DEPARTAMENTO DE CONTROLE DO ESPAÇO AÉREO



CHANGES: EAC, RMK.

— RMK —

3 - IAS MAX 210KT até / until NTL VOR.

4 - Proibido curvar antes da DER.
Forbidden turn before DER.

5 - Descrição textual / *Textual description:*

SID NTL 3A

RWY 12

Manter proa 120 até cruzar 600'. Então, curvar à DIREITA, direto VOR NTL, então:
Maintain heading 120 until passing 600'. Then, turn RIGHT, direct NTL VOR, after:

TRNS SIREDE: Interceptar a RDL 049 NTL até SIREDE.

TRNS SIREDE: Intercept 049 RDL NTL until SIREDE.

TRNS OGPERS: Interceptar a RDL 075 NTL até OGPERS.

TRNS OGPERS: Intercept 075 RDL NTL until OGPERS.

SID NTL 3B

RWY 16L/16R

Manter proa 162 até cruzar 600'. Então, curvar à DIREITA, direto VOR NTL, então:
Maintain heading 162 until passing 600'. Then, turn RIGHT, direct NTL VOR, after:

TRNS SIREDE: Interceptar a RDL 049 NTL até SIREDE.

TRNS SIREDE: Intercept 049 RDL NTL until SIREDE.

TRNS OGPERS: Interceptar a RDL 075 NTL até OGPERS.

TRNS OGPERS: Intercept 075 RDL NTL until OGPERS.