

**INSTRUMENT APPROACH  
CHART (IAC)**

**RIO BRANCO / Plácido de Castro, INTL (SBRB)**

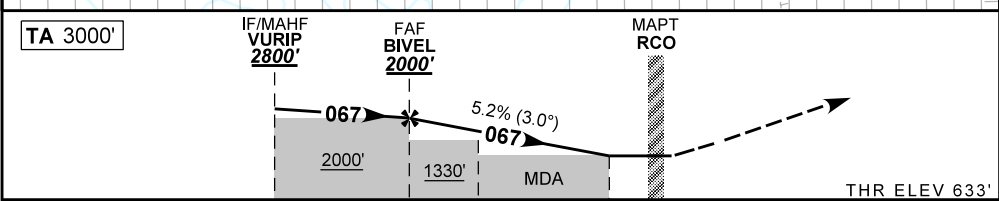
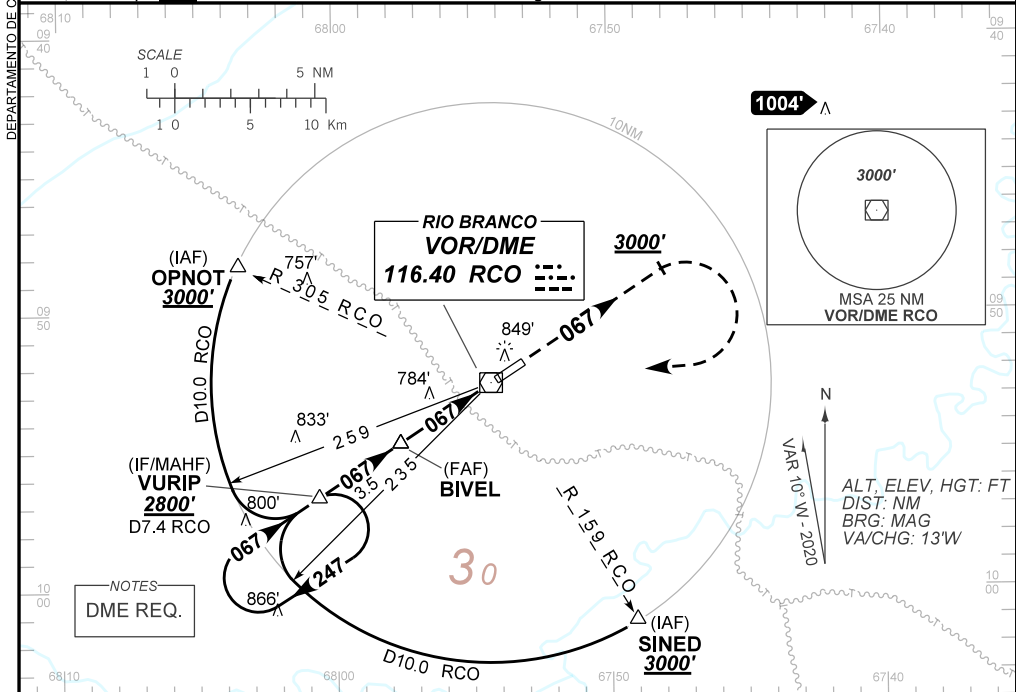
**AD ELEV: 633'**

**VOR Y RWY 06**

D-ATIS <b>NIL</b>	APP RIO BRANCO <b>119.90</b>	TWR RIO BRANCO <b>118.70</b>	GNDC <b>NIL</b>
VOR RCO <b>116.40 MHz</b>	FINAL CRS <b>067°</b>	FAF: <b>2000'</b>	N/A
		VOR MDA / (OCH): <b>1060' / (430')</b>	

APCH Perdida: Subir para **4000'**. Manter RDL **067°** do VOR RCO até **3000'**. Após, curvar à DIREITA direto VOR RCO. Após, interceptar a RDL **247°** do VOR RCO até VURIP para espera.

Missed APCH: Climb to **4000'**. Maintain **067°** RDL RCO VOR until **3000'**. After, turn RIGHT direct to RCO VOR. After, intercept **247°** RDL RCO VOR until VURIP for holding.



TO THR 06 (NM)	7.6	4.1	3.2	1.2	0.0	THR ELEV 633'
TO RCO (DME)	7.4	3.9	3.0	1.0	0.2	

	BIVEL	3.2	2.0	1.2	RWY06	Ground Speed (KT)	090	110	130	150	170	190
	2000	1702	1320	1060	ALT	FPM	500	600	700	800	900	1000
	1367	1069	687	430	(HGT)	FAF-MAPT	NA					

STRAIGHT-IN	CAT	A	B	C	D	E
	MDA / (OCH)	1060' / (430')				
VOR	ALS/NO ALS/ RVR ALS (m)	800 / 1600 / 700		1300 / 2000 / 1100		
CIRCLING	MDA / (OCH)	NA				
	VIS (m)					

AIRAC AMDT 2213A1 29 DEC 22

SBRB\_IAC\_00N/1/1  
IAC VOR Y RWY 06