

INSTRUMENT APPROACH
CHART (IAC)

PORTO ALEGRE / Canoas, MIL (SBCO)

AD ELEV: 26'

RNP Y RWY 31

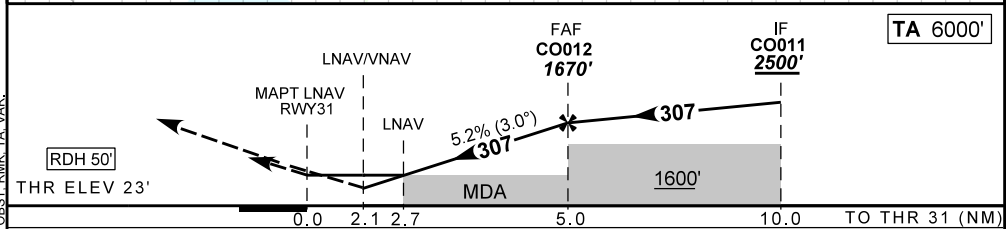
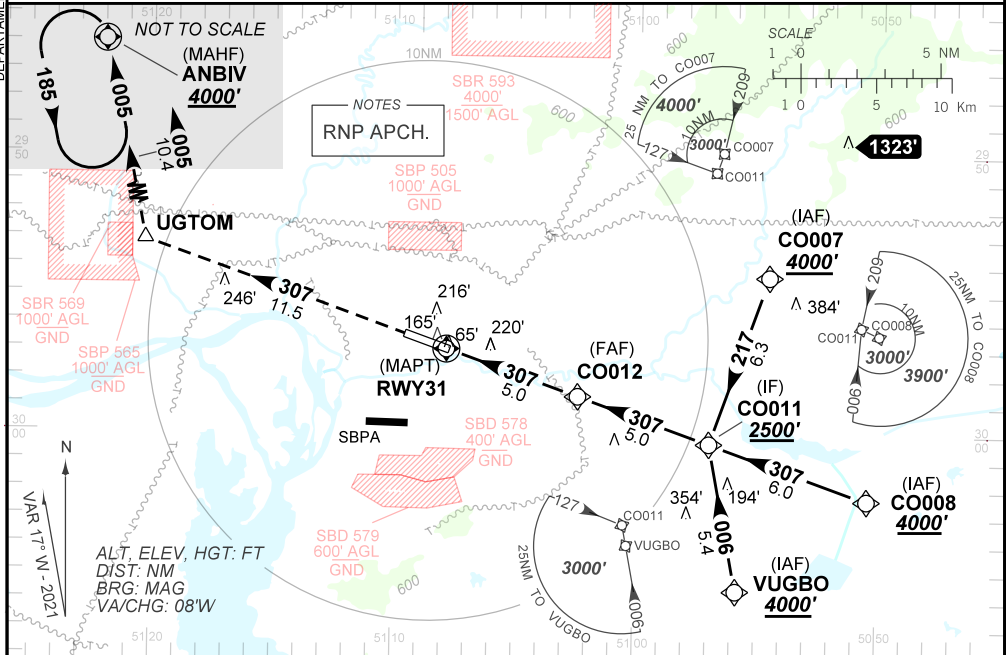
ATIS NIL	APP PALEGRE 119.00 120.10 120.55 128.90	TWR CANOAS 118.50 122.80 (MIL)	GNDC CANOAS 121.70
-------------	--	-----------------------------------	-----------------------

TEMP LNAV/VNAV MIN -10°C / MAX 50°C	FINAL CRS 307°	FAF: 1670'	LNAV/VNAV DA / (OCH): 750' / (730')	LNAV MDA / (OCH): 950' / (930')
--	-------------------	---------------	--	------------------------------------

APCH Perdida: 1) Subir para **4000'** no rumo **307** até UGTOM. Após, curvar a DIREITA rumo **005** até ANBIV para espera.

Missed APCH: 1) Climb to **4000'** on course **307** up to UGTOM. Then, turn RIGHT course **005** up to ANBIV for holding.

RMK: NIL



RWY31	2.1	2.7	3.0	4.0	CO012	
ALT	750	950	1031	1350	1670	
(HGT)	730	930	1005	1324	1647	

STRAIGHT-IN	CAT	A	B	C	D	E
	DA / (OCH)	750' / (730')				NA
LNAV/VNAV	ALS/NO ALS/ RVR ALS (m)	NIL / 3400 / NIL				NA
	MDA / (OCH)	950' / (930')				
LNAV	ALS/NO ALS/RVR ALS (m)	NIL / 3400 / NIL		NIL / 4300 / NIL		
	MDA / (OCH)	NA				
CIRCLING	MDA / (OCH)	NA				
	VIS (m)	NA				

DEPARTAMENTO DE CONTROLE DO ESPAÇO AEREO

CHANGES: BRG, EAC, F, IDENT, LAYOUT, OBST, RMK, TA, VAR.