

**INSTRUMENT APPROACH CHART (IAC)**

**USO EXCLUSIVO ACFT MILITARES  
MILITARY ACFT ONLY**

**RIO DE JANEIRO / Santa Cruz, MIL (SBSC)**

**PAR W RWY 23**

**AD ELEV.: 10'**

ATIS NIL	APP RIO 133.70 132.50 134.40 121.25 119.00 120.55 124.95 134.95 129.80 125.95	PAR SANTA CRUZ 132.20	TWR SANTA CRUZ 118.80 122.90	GNDC SANTA CRUZ 121.80
-------------	-------------------------------------------------------------------------------------	-----------------------------	------------------------------------	------------------------------

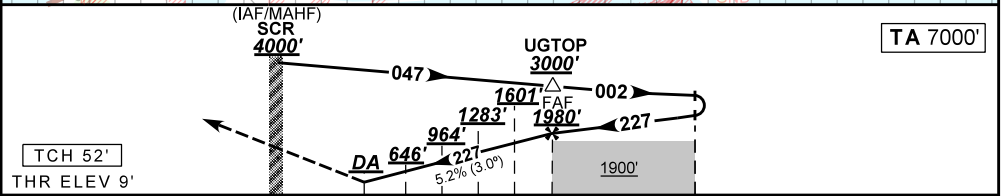
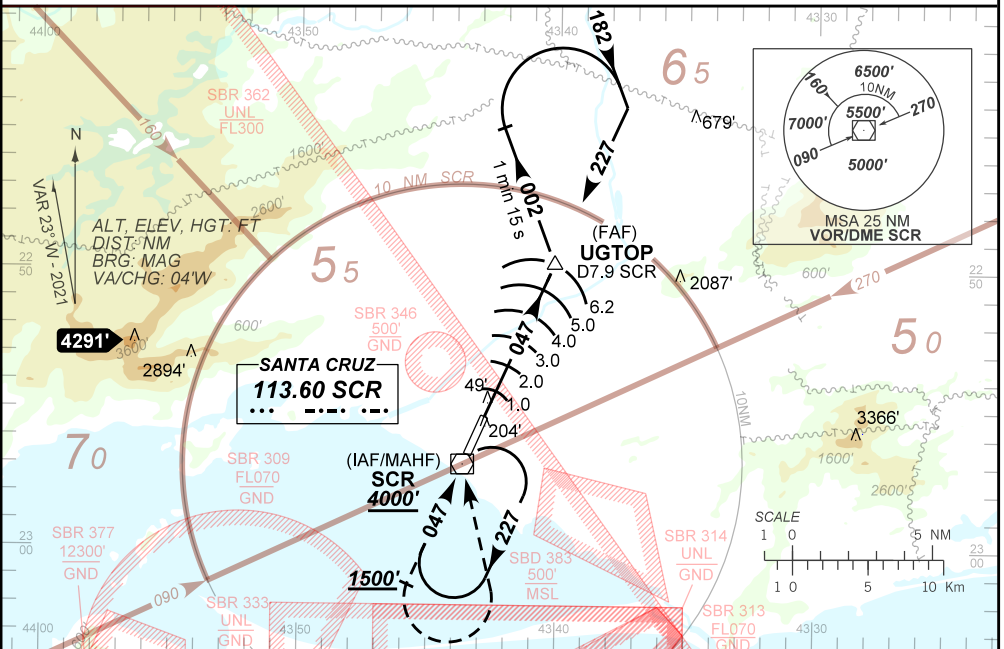
VOR SCR 113.60 MHz	FINAL CRS 227°	FAF: 1980'	PAR DA / (OCH): 210' / (201')	N/A
-----------------------	-------------------	---------------	----------------------------------	-----

APCH Perdida: 1) Subir para **4000'**. Manter rumo **227** até cruzar **1500'**. Após, curvar à ESQUERDA direto para SCR para espera. 2) IAS MAX 240KT.

Missed APCH: 1) Climb to **4000'**. Maintain course **227** until passing **1500'**. Then, turn LEFT direct to SCR for holding. 2) MAX IAS 240KT.

RMK: NIL.

DEPARTAMENTO DE CONTROLE DO ESPAÇO AEREO



0.2 0.7 2.0 3.0 4.0 5.0 6.2 TO TD 23 (NM)

TD 23	0.7	2.0	3.0	4.0	5.0	UGTOP	Ground Speed (KT)	90	110	130	150	170	190
ALT	210	646	964	1283	1601	1980	FPM	500	600	700	800	900	1000
(HGT)	201	637	955	1274	1592	1971	FAF-MAPT	NA					

STRAIGHT-IN	CAT	A	B	C	D	E
PAR	DA / (OCH)	210' / (201')				
	ALS/NO ALS/ RVR ALS (m)	NIL / 1200 / NIL				
CIRCLING	MDA / (OCH)	NA				
	VIS (m)	NA				

CHANGES: DA, DIST, LAYOUT, MIN, OPR

AIRAC AMDT 2108A1 12 AUG 21

**USO EXCLUSIVO ACFT MILITARES / MILITARY ACFT ONLY**

**SBSC\_IAC\_01A 1/1  
IAC PAR W RWY 23**