

**INSTRUMENT APPROACH
CHART (IAC)**

GAVIÃO PEIXOTO / EMBRAER - Unidade Gavião Peixoto (SBGP)

RNP V RWY 02R

AD ELEV: 1998'

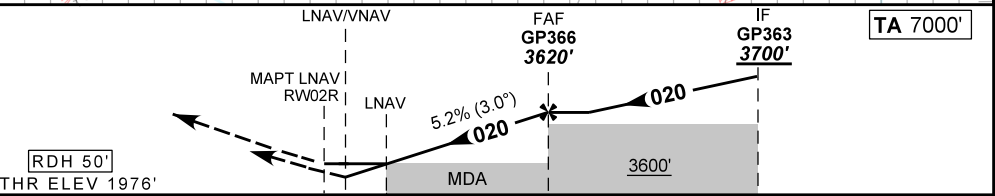
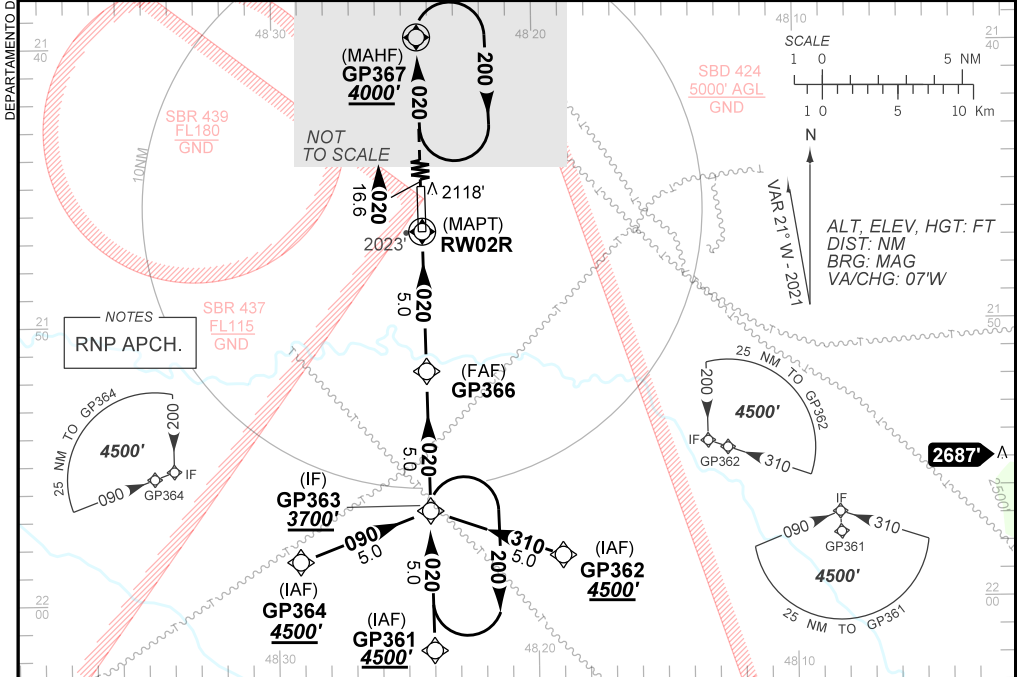
| | | |
|---|--|--|
| ATIS NIL | APP ACADEMIA 120.10 122.40 | AFIS GAVIÃO 118.95 |
| TEMP LNAV/VNAV MIN -10°C / MAX 50°C | FINAL CRS 020° | FAF: 3620' |
| | LNAV/VNAV DA / (OCH): 2290' / (320') | LNAV MDA / (OCH): 2370' / (400') |

APCH Perdida: Subir para **4000'** no rumo **020** até GP367 para espera.

Missed APCH: Climb to **4000'** on course **020** until GP367 for holding.

RMK: Espera em GP363 a 3700' ou acima.

Holding on GP363 at 3700' or above.



| | | | | | | | | | | | | | |
|--------|------|------|------|------|-------|--|-------------------|-----|-----|-----|-----|-----|-----|
| RWY02R | 1.1 | 2.0 | 3.0 | 4.0 | GP366 | | Ground Speed (KT) | 090 | 110 | 130 | 150 | 170 | 190 |
| ALT | 2370 | 2663 | 2981 | 3300 | 3620 | | FPM | 500 | 600 | 700 | 800 | 900 | NA |
| (HGT) | 400 | 687 | 1005 | 1324 | 1642 | | FAF-MAPT | NIL | | | | | |

| | | | | | | |
|-------------|-------------------------|------------------|---|------------------|---|----|
| STRAIGHT-IN | CAT | A | B | C | D | E |
| | DA / (OCH) | 2290' / (320') | | | | NA |
| LNAV/VNAV | ALS/NO ALS/ RVR ALS (m) | NIL / 1600 / NIL | | | | NA |
| | MDA / (OCH) | 2370' / (400') | | | | |
| LNAV | ALS/NO ALS/ RVR ALS (m) | NIL / 1600 / NIL | | NIL / 1800 / NIL | | |
| | MDA / (OCH) | NA | | | | |
| CIRCLING | MDA / (OCH) | NA | | | | |
| | VIS (m) | NA | | | | |

CHANGES: FREQ, IDENT, LAYOUT, RMK, TA.