

**INSTRUMENT APPROACH
CHART (IAC)**

JAGUARUNA / Regional Sul (SBJA)

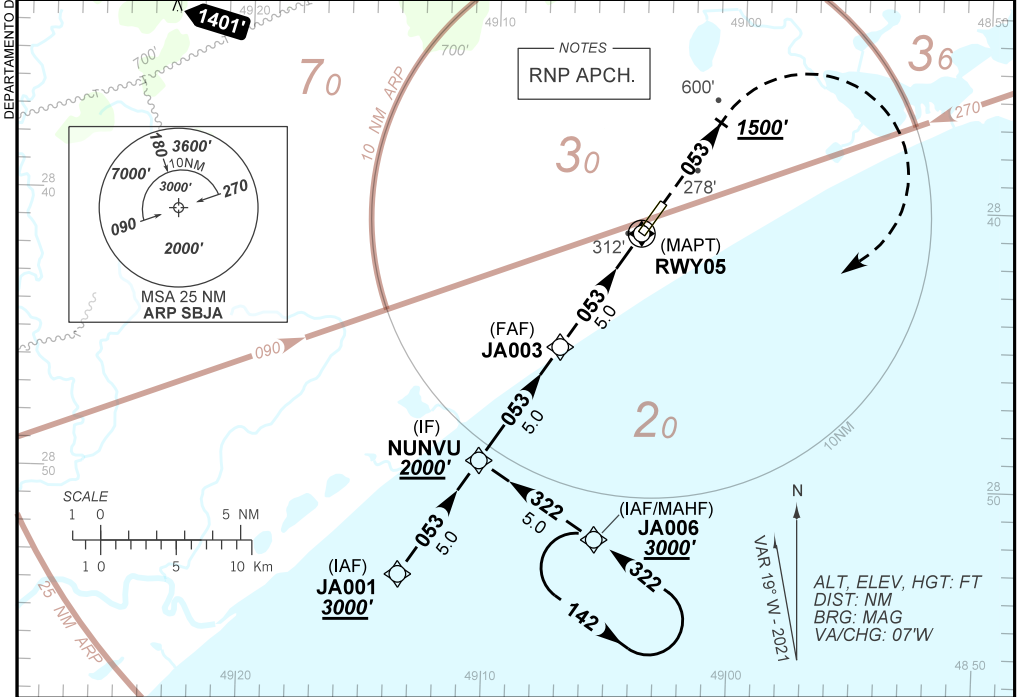
AD ELEV: 115'

RNP RWY 05

ATIS NIL	AFIS JAGUARUNA 130.70	TWR NIL	GNDC NIL
TEMP LNAV/VNAV MIN -10°C / MAX 50°C	FINAL CRS 053°	FAF: 1760'	LNAV/VNAV DA / (OCH): REFER TO MNM
		MDA / (OCH): 560' / (450')	

APCH Perdida: Subir para **3000'**. Manter rumo **053** até **1500'**. Após, curvar a DIREITA para espera em JA006. Missed APCH: Climb to **3000'**. Maintain course **053** until **1500'**. After, turn RIGHT to JA006 for holding.

RMK: 1) IAS MAX 230KT entre JA006 e NUNVU. 2) ACFT procedente setor W coordenar Radio Criciúma em 131.95.
1) IAS MAX 230KT BTN JA006 and NUNVU. 2) ACFT from W sector coordinate with Criciúma Radio on frequency 131.95.



TA 7000'	IF NUNVU 2000'	FAF JA003 1760'	LNAV/VNAV	MAPT LNAV RWY05	RDH 50'
					THR ELEV 110'
TO THR 05 (NM)	10.0	5.0	1.3	0.9	0.0

JA003	4.0	3.0	2.0	1.3	0.9	RWY05	Ground Speed (KT)	090	110	130	150	170	190
1760	1434	1115	797	560	454	ALT	FPM	500	600	700	800	900	NA
1650	1324	1005	687	450	350	(HGT)	FAF-MAPT	NA					

STRAIGHT-IN	CAT	A	B	C	D	E
LNAV/VNAV	DA / (OCH)	454' / (350')		473' / (370')		
	ALS/NO ALS/ RVR ALS (m)	NIL / 1600 / NIL		NIL / 1700 / NIL		
LNAV	MDA / (OCH)	560' / (450')				
	ALS/NO ALS/ RVR ALS (m)	NIL / 1600 / NIL		NIL / 2100 / NIL		
CIRCLING	MDA / (OCH)	NA				
	VIS (m)					

CHANGES: ALT, IDENT, HDG, LAYOUT, VAR.

AIRAC AMDT 2107A1 15 JUL 21

SBJA_IAC_00A 1/1
IAC RNP RWY 05