

**INSTRUMENT APPROACH
CHART (IAC)**

BELO HORIZONTE / Tancredo Neves, INTL (SBCF)

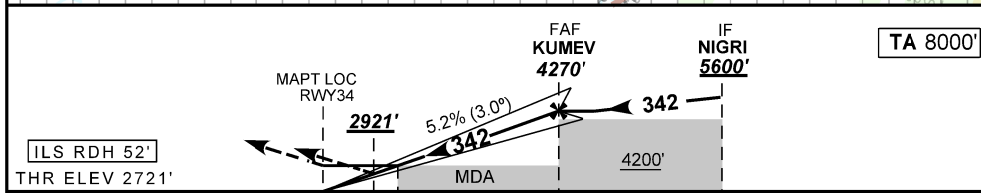
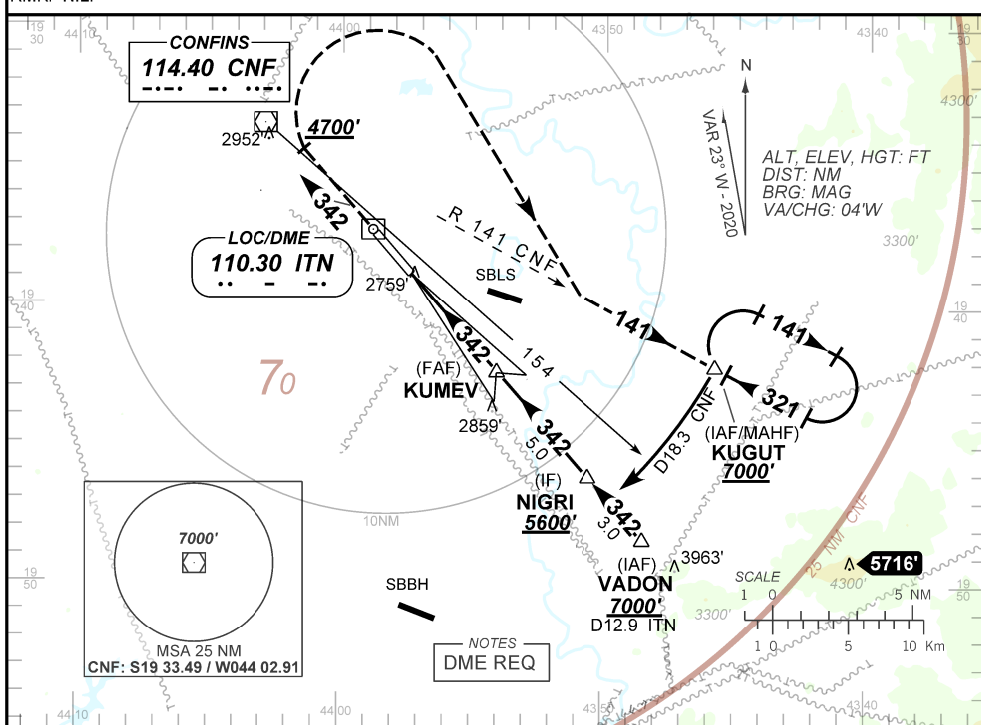
ILS Z or LOC Z RWY 34

AD ELEV: 2721'

| | | | |
|------------------------------|--|--|---|
| D-ATIS 127.85 | APP BELO HORIZONTE 119.10 119.30 119.65 120.20 128.55 129.10 129.40 121.50 | TWR CONFINES 118.20 121.50 | GND C CONFINES 121.90 |
| LOC ITN 110.30 MHz | FINAL CRS 342° | FAF 4270' | CATT DA / (OCH): 2921' / (200') |
| | | LOC Only MDA / (OCH): 3170' (450') | |

APCH Perdida: 1) Subir para **7000'**. Manter proa **342°** até cruzar **4700'**. Então, curvar à DIREITA para interceptar a RDL **141°** do VOR CNF até KUGUT para espera. 2) IAS MAX 230KT.
Missed APCH: 1) Climb to **7000'**. Maintain heading **342°** until passing **4700'**. Then, turn RIGHT to intercept **141°** RDL CNF VOR up to KUGUT for holding. 2) IAS MAX 230KT.

RMK: NIL.



| | | | | | | | | | | | | |
|-------|-----|------|------|------|-------|----------|-----|-----|-----|-----|-----|-----|
| RWY34 | 1.2 | 2.0 | 3.0 | 4.0 | KUMEV | KT | 090 | 110 | 130 | 150 | 170 | 190 |
| | ALT | 3170 | 3410 | 3728 | 4047 | 4270 | FPM | 500 | 600 | 700 | 800 | 900 |
| (HGT) | 450 | 689 | 1007 | 1326 | 1549 | FAF-MAPT | NA | | | | | |

| | | | | | | |
|-------------|-------------------------|------------------|----------------|------------------|---|---|
| STRAIGHT-IN | CAT | A | B | C | D | E |
| | CAT I | DA / (OCH) | 2921' / (200') | | | |
| LOC | ALS/NO ALS/ RVR ALS (m) | NIL / 1200 / NIL | | | | |
| | MDA / (OCH) | 3170' / (450') | | | | |
| CIRCLING | ALS/NO ALS/ RVR ALS (m) | NIL / 1600 / NIL | | NIL / 2100 / NIL | | |
| | MDA / (OCH) | NA | | | | |
| VIS (m) | | | | | | |

CHANGES: NEW CHART.