

**INSTRUMENT APPROACH
CHART (IAC)**

CANOAS / Campo Nossa Senhora de Fátima, MIL (SBCO)

**USO EXCLUSIVO ACFT MILITARES
MILITARY ACFT ONLY**

PAR Y RWY 13

AD ELEV: 26'

ATIS NIL	APP PALEGRE 119.00 120.10 120.55 128.90	PAR CANOAS 129.15 134.80	TWR CANOAS 118.50 122.80 (MIL)	GNDC CANOAS 121.70
-------------	--	-----------------------------	-----------------------------------	-----------------------

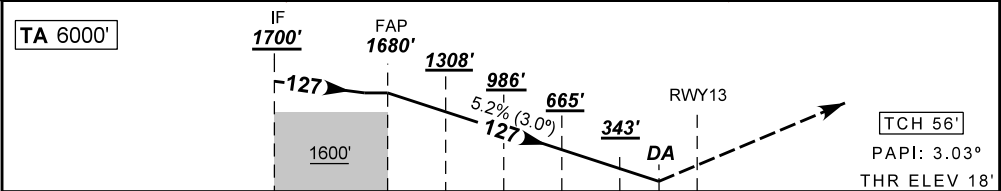
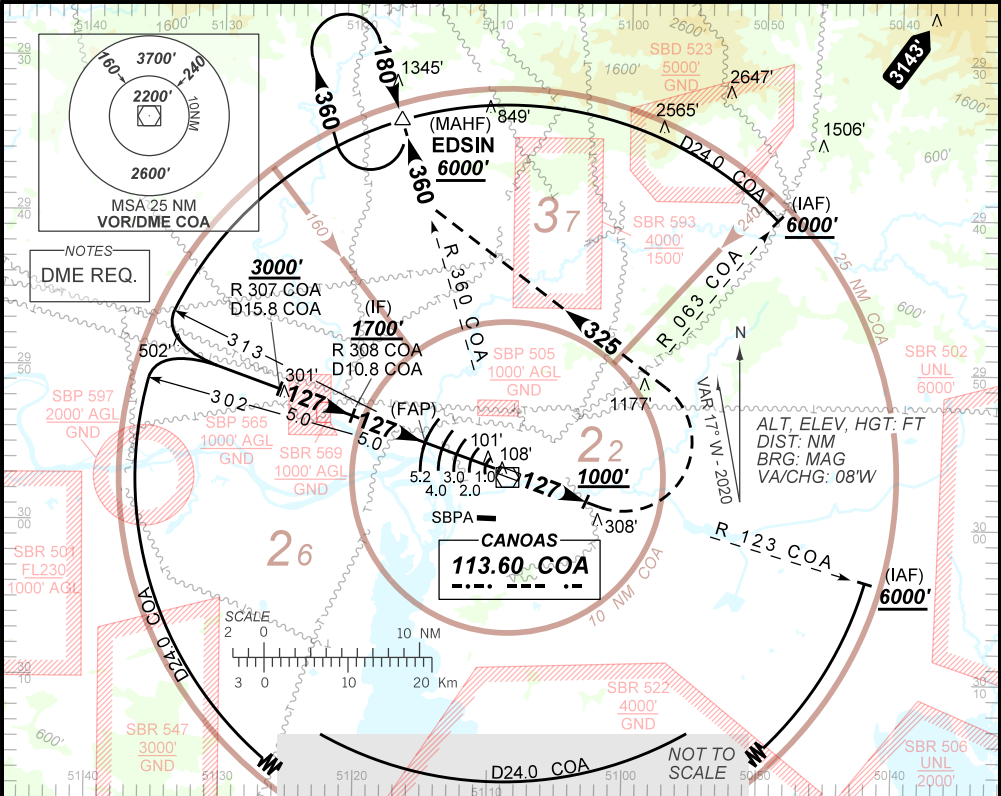
N/A	FINAL CRS 127°	FAP 1680'	PAR DA / (OCH): 288' / (270')	N/A
-----	-------------------	--------------	----------------------------------	-----

APCH Perdida: Subir para **6000'**. Manter proa **127** até **1000'**. Após, curvar à ESQUERDA, proa **325** para interceptar RDL **360** do VOR COA até EDSIN para espera.

Missed APCH: Climb to **6000'**. Maintain heading **127** until **1000'**. After, turn LEFT heading **325** to intercept **360** RDL COA VOR to EDSIN for holding.

RMK: NIL.

DEPARTAMENTO DE CONTROLE DO ESPAÇO AÉREO



TO TDZ 13 (NM) 10.2 5.2 4.0 3.0 2.0 1.0 0.8 0.2

FAP	4.0	3.0	2.0	1.0	0.8	TDZ13	Ground Speed (KT)	090	110	130	150	170	190
1680	1308	986	665	343	288	ALT	FPM	500	600	700	800	900	1000
1662	1290	968	647	325	270	(HGT)	FAP-MAPT	NA					

STRAIGHT-IN	CAT	A	B	C	D	E
PAR	DA / (OCH)	288' / (270')				
	ALS/NO ALS/ RVR ALS (m)	800 / 1300 / NIL				

CHANGES: EAC IDENT.

AIRAC AMDT 2201A1 27 JAN 22

USO EXCLUSIVO ACFT MILITARES / MILITARY ACFT ONLY

SBCO_IAC_01T 1/1
IAC PAR Y RWY 13