

DEPARTURE CHART
INSTRUMENT (SID)

RIO DE JANEIRO / Campo Nero Moura, MIL (SBSC)

RWY 05/23

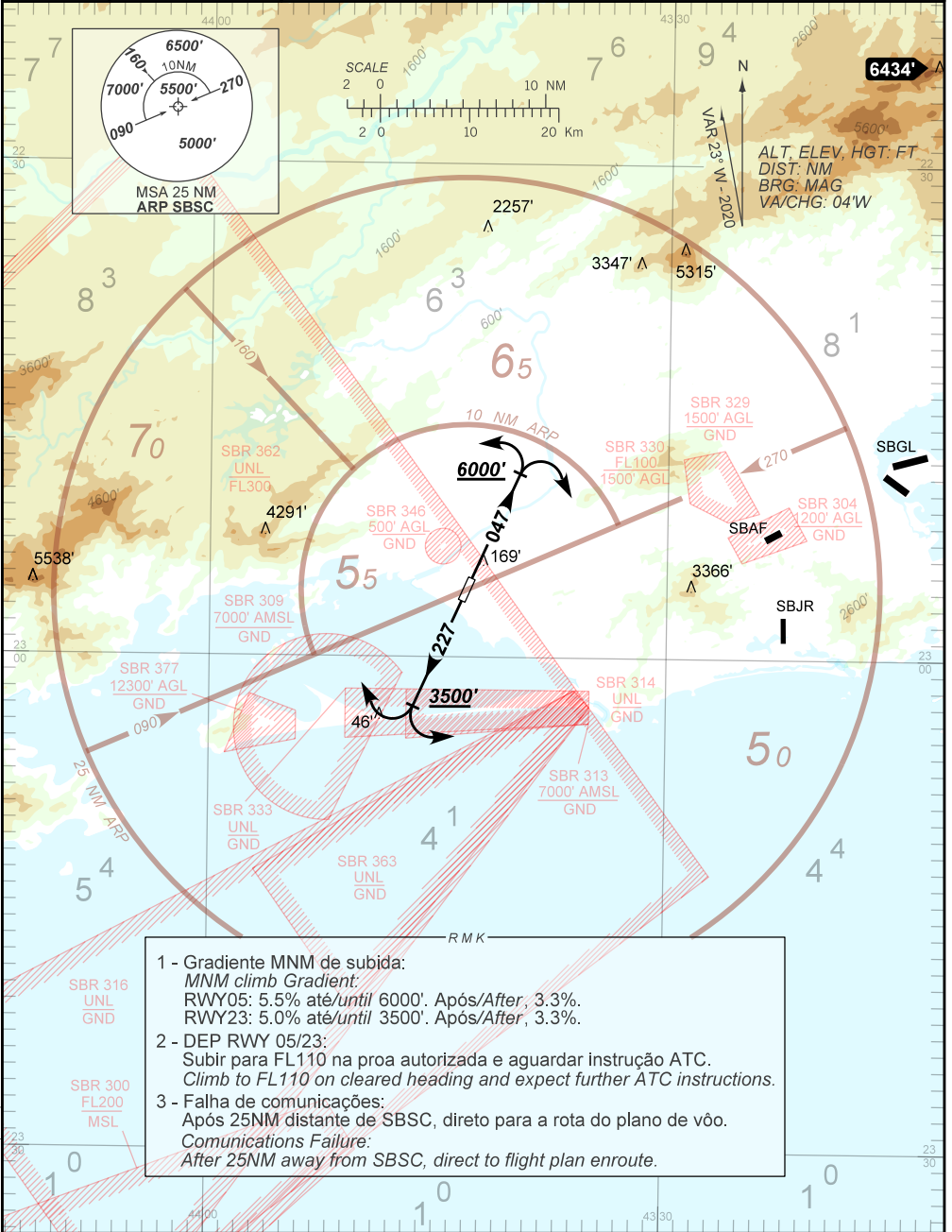
OMNI

AD ELEV: 10'

| | | | | | | | | | |
|----------|---------------------------------|------------------------------------|------------------------------------|-----------------------------|-----------------------------|--------------|--|--|--|
| TA 7000' | TWR SANTA CRUZ 118.80 122.90 | APP RIO | | | | ACC CURITIBA | | | |
| | | 133.70 132.50 134.40 121.25 119.00 | 120.55 124.95 134.95 129.80 125.95 | 124.00 125.35 127.05 133.40 | 133.60 128.40 124.90 133.80 | | | | |

DEPARTAMENTO DE CONTROLE DO ESPAÇO AÉREO

CHANGES: AMA, EAC, IDENT.



- 1 - Gradiente MNM de subida:
MNM climb Gradient:
RWY05: 5.5% até/until 6000'. Após/After, 3.3%.
RWY23: 5.0% até/until 3500'. Após/After, 3.3%.
- 2 - DEP RWY 05/23:
Subir para FL110 na proa autorizada e aguardar instrução ATC.
Climb to FL110 on cleared heading and expect further ATC instructions.
- 3 - Falha de comunicações:
Após 25NM distante de SBSC, direto para a rota do plano de voo.
Communications Failure:
After 25NM away from SBSC, direct to flight plan enroute.