

**INSTRUMENT APPROACH  
CHART (IAC)**

**VITÓRIA / Eurico de Aguiar Salles, INTL (SBVT)**

**RNP B RWY 06**

(CAT A, B, C)

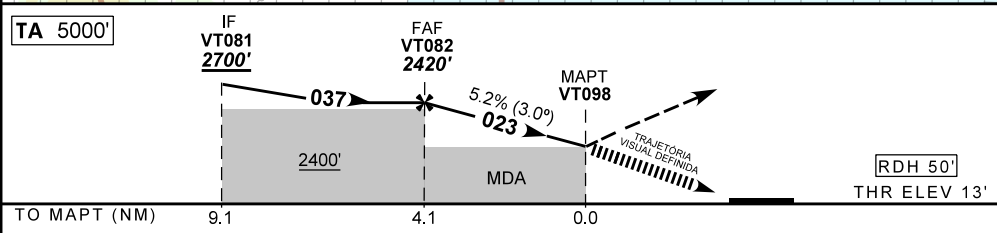
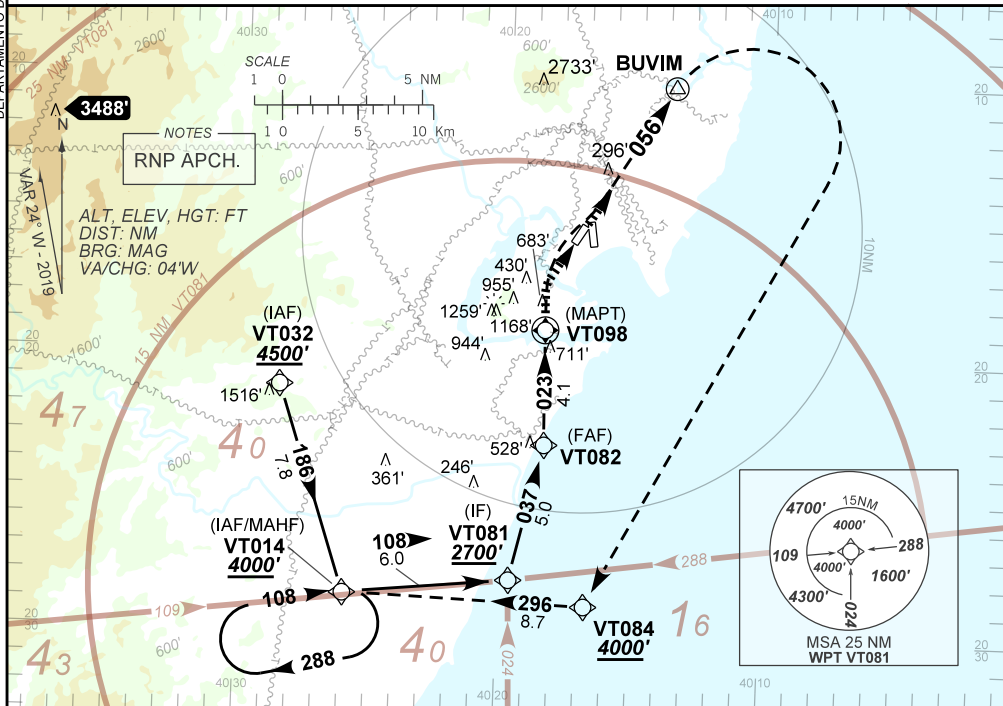
**AD ELEV: 34'**

ATIS <b>127.575</b>	APP VITÓRIA <b>119.85</b>	TWR VITÓRIA <b>118.10</b>	GNDC VITÓRIA <b>121.95</b>
N/A	FINAL CRS <b>023°</b>	FAF: <b>2420'</b>	N/A

APCH Perdida: Subir para **4000'**. Curvar à DIREITA rumo **056** até BUVIM. Curvar à DIREITA direto VT084. Curvar à DIREITA, rumo **296** até VT014 para espera.

Missed APCH: Climb to **4000'**. Turn RIGHT course **056** up to BUVIM. Turn RIGHT direct VT084. Turn RIGHT course **296** up to VT014 for holding.

DEPARTAMENTO DE CONTROLE DO ESPAÇO AÉREO



TO MAPT (NM)	9.1	4.1	0.0
VT082	4.0	3.0	2.0
2420	2387	2068	1750
2386	2353	2034	1716
	1.0	1431	1100
	1070	1070	(HGT)
Ground Speed (KT)	090	110	130
FPM	500	600	700
FAF-MAPT	NA		

STRAIGHT-IN	CAT	A	B	C	D	E
	MDA / (OCH)			NA		
LNAV	ALS/NO ALS/ RVR ALS (m)			NA		
	DA / (OCH)			NA		
LNAV/VNAV	ALS/NO ALS/ RVR ALS (m)			NA		
	MDA / (OCH)	1100' / (1070')				NA
CIRCLING	MS (m)	NIL / 2000 / NIL	NIL / 2400 / NIL	NIL / 4800 / NIL		

CHANGES: IDENT, LAYOUT.

AD ELEV: 34'



**TRAJETÓRIA VISUAL DEFINIDA RWY 06**  
**VISUAL PRESCRIBED TRACK RWY 06**

1) O piloto deverá estar em contato visual e prover sua própria separação com as referências visuais: Torre, Chaminés da Área Portuária e Obstáculos Naturais.

*The pilot should have visual contact and provide their own separation with the visual references: Tower, Chimneys of the Port Area and Natural Obstacles.*

2) Em caso de arremetida durante a manobra para circular: Subir para 4000' e interceptar a trajetória de aproximação perdida publicada.

*In case of go around during the visual manoeuvring: Climb to 4000' and intercept the trajectory of the missed approach published.*

CHANGES: IDENT. LAYOUT.