

**INSTRUMENT APPROACH  
CHART (IAC)**

**SÃO ROQUE / São Paulo Catarina Aeroporto Executivo, INTL (SBJH)**

**RNP Y RWY 30**

(CAT A, B, C)

**AD ELEV: 2549'**

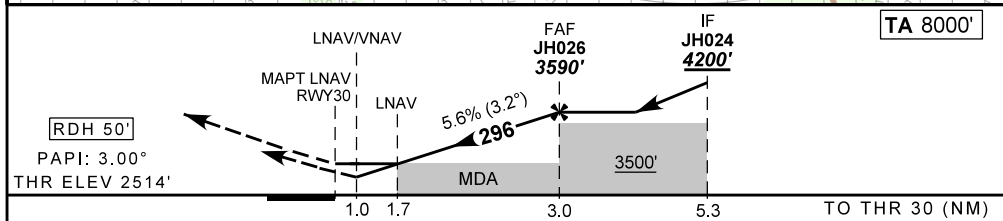
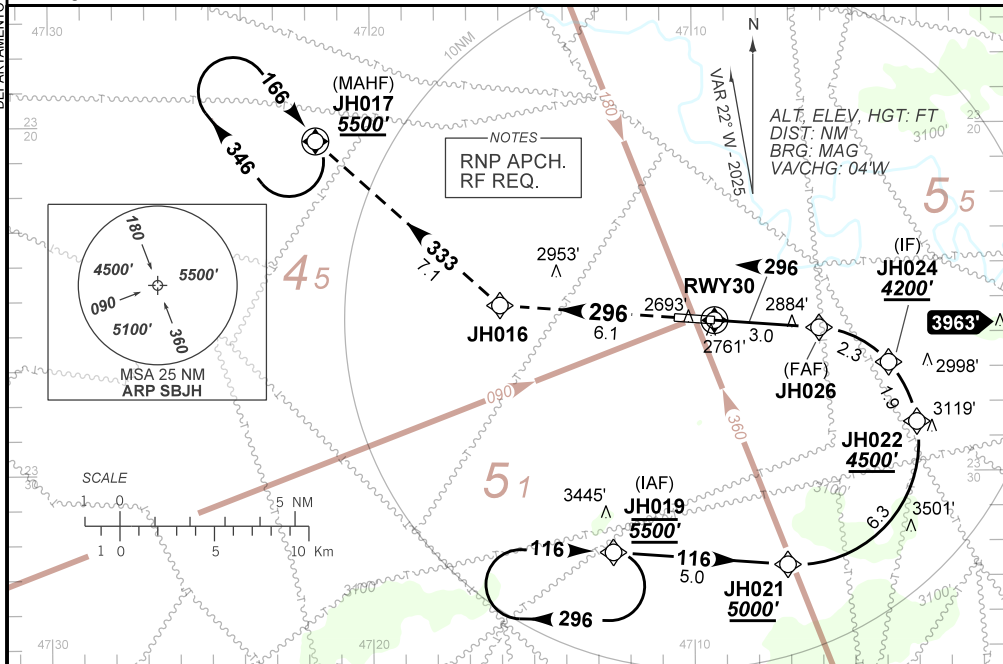
ATIS <b>NIL</b>	APP SÃO PAULO <b>132.10 120.25 119.80 119.25 129.75</b>	AFIS CATARINA <b>131.80</b>	GNDC <b>NIL</b>
--------------------	--	--------------------------------	--------------------

TEMP LNAV/VNAV <b>MIN 0°C / MAX 46°C</b>	FINAL CRS <b>296°</b>	FAF: <b>3590'</b>	LNAV/VNAV DA / (OCH): <b>2916' / (402')</b>	LNAV MDA / (OCH): <b>3130' / (620')</b>
---	--------------------------	----------------------	--	--

APCH Perdida: Subir para **5500'**. Manter rumo **296** até JH016. Após, curvar à DIREITA no rumo **333** até JH017 para espera.

Missed APCH: Climb to **5500'**. Maintain course **296** until JH016. After, turn RIGHT course **333** until JH017 for holding.

DEPARTAMENTO DE CONTROLE DO ESPAÇO AÉREO



	JH026	2.0	1.7	RWY30	Ground Speed (KT)	090	110	130	150	170	190
	3590	3244	3130	ALT	FPM	500	650	750	850	NA	NA
	1076	730	620	(HGT)	FAF-MAPT	NA					

STRAIGHT-IN	CAT	A	B	C	D	E
	DA / (OCH)	2916' / (402')			NA	
LNAV/VNAV	ALS/NO ALS/ RVR ALS (m)	NIL / 1900 / NIL			NA	
	MDA / (OCH)	3130' / (620')			NA	
LNAV	ALS/NO ALS/ RVR ALS (m)	NIL / 1900 / NIL		NIL / 2800 / NIL		
	MDA / (OCH)	NA				
CIRCLING		NA				

CHANGES: LAYOUT, PROC. VAR.