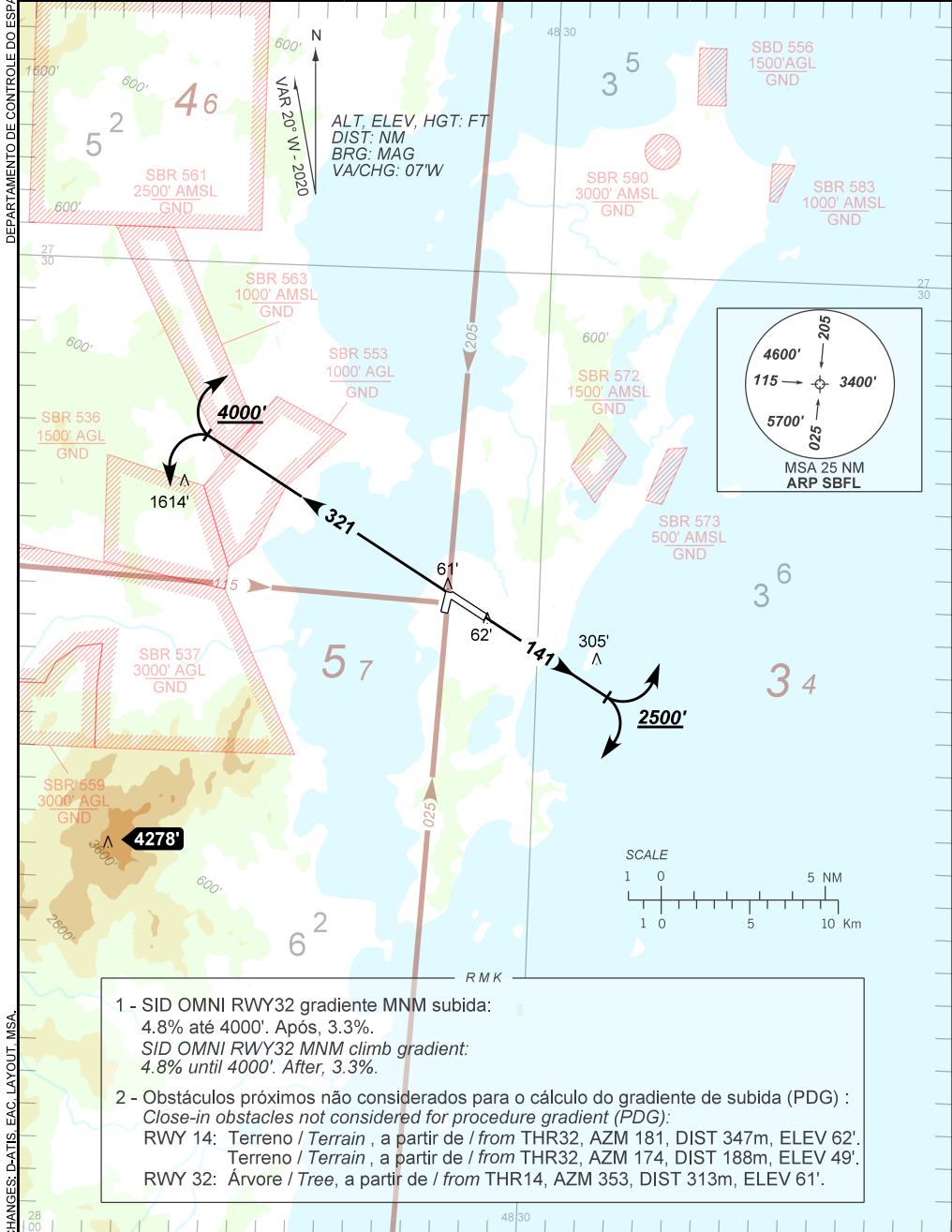


AD ELEV: 17'

| | | | | | | | |
|----------|------------------|---|--|------------------------------------|------------------------------------|--|--|
| TA 9000' | D-ATIS 127.45 | TWR FLORIANÓPOLIS 118.70 122.80(MIL) | APP FLORIANÓPOLIS 119.50 119.65 128.95 129.45 129.60 | ACC CURITIBA | | | |
| | | | | 124.40 125.40 126.10 127.05 125.80 | 127.20 126.95 128.25 127.50 128.40 | | |



- SID OMNI RWY32 gradiente MNM subida:
4.8% até 4000'. Após, 3.3%.
SID OMNI RWY32 MNM climb gradient:
4.8% until 4000'. After, 3.3%.
- Obstáculos próximos não considerados para o cálculo do gradiente de subida (PDG) :
Close-in obstacles not considered for procedure gradient (PDG):
RWY 14: Terreno / Terrain , a partir de / from THR32, AZM 181, DIST 347m, ELEV 62'.
Terreno / Terrain , a partir de / from THR32, AZM 174, DIST 188m, ELEV 49'.
RWY 32: Árvore / Tree, a partir de / from THR14, AZM 353, DIST 313m, ELEV 61'.

CHANGES: DATIS, EAC, LAYOUT, MSA.