

**INSTRUMENT APPROACH
CHART (IAC)**

SANTO ÂNGELO / Santo Ângelo (SBNM)

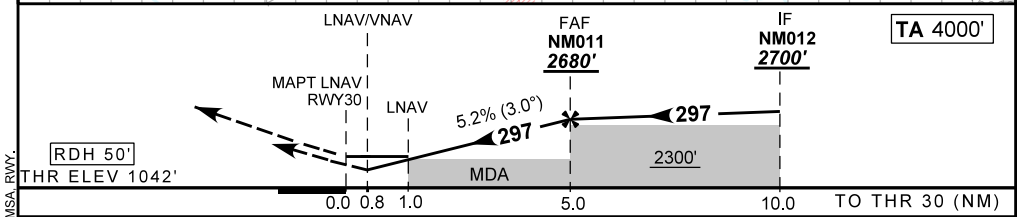
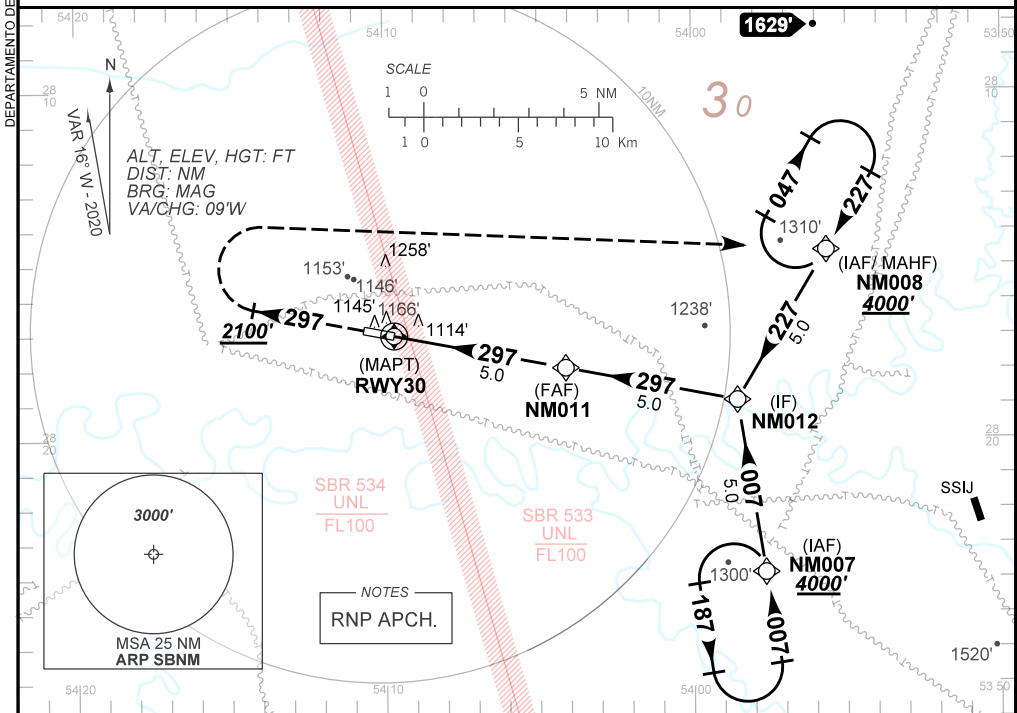
AD ELEV: 1056'

RNP RWY 30

ATIS NIL		APP NIL		AFIS SANTO ÂNGELO 131.65		GNDC NIL	
TEMP LNAV/VNAV MIN -10°C / MAX 50°C		FINAL CRS 297°		FAF: 2680'		LNAV/VNAV DA / (OCH): 1343' / (310')	
						LNAV MDA / (OCH): 1400' / (360')	

APCH Perdida: Subir para **4000'** no rumo 297. Ao passar **2100'**, curvar à DIREITA direto NM008 para espera.
Missed APCH: Climb to **4000'** on course 297. On passing **2100'**, turn **RIGHT** direct to NM008 for holding.

RMK: NIL.



RWY30	1.0	2.0	3.0	4.0	NM011		Ground Speed (KT)	090	110	130	150	170	190
ALT	1400	1729	2048	2365	2680		FPM	500	600	700	800	900	NA
(HGT)	360	687	1006	1323	1638		FAF-MAPT	NIL					

STRAIGHT-IN	CAT	A	B	C	D	E
	DA / (OCH)	1343' / (310')				
LNAV/VNAV	ALS/NO ALS/ RVR ALS (m)	NIL / 1400 / NIL			NA	
	MDA / (OCH)	1400' / (360')				
LNAV	ALS/NO ALS/ RVR ALS (m)	NIL / 1600 / NIL				
	MDA / (OCH)					
CIRCLING	MDA / (OCH)				NA	
	VIS (m)					

DEPARTAMENTO DE CONTROLE DO ESPAÇO AÉREO
CHANGES: DEC. FREQ. IDENT. LAYOUT, MSA, RWY.