

**INSTRUMENT APPROACH
CHART (IAC)**

PELOTAS / João Simões Lopes Neto, INTL (SBPK)

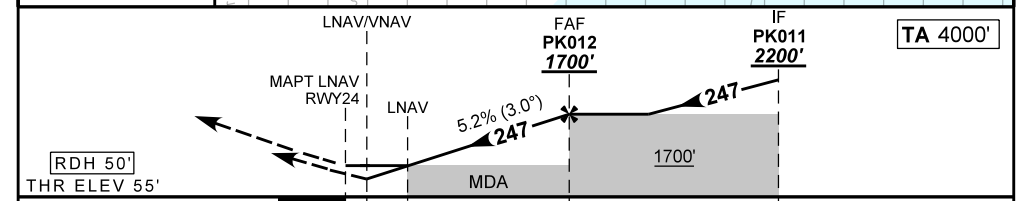
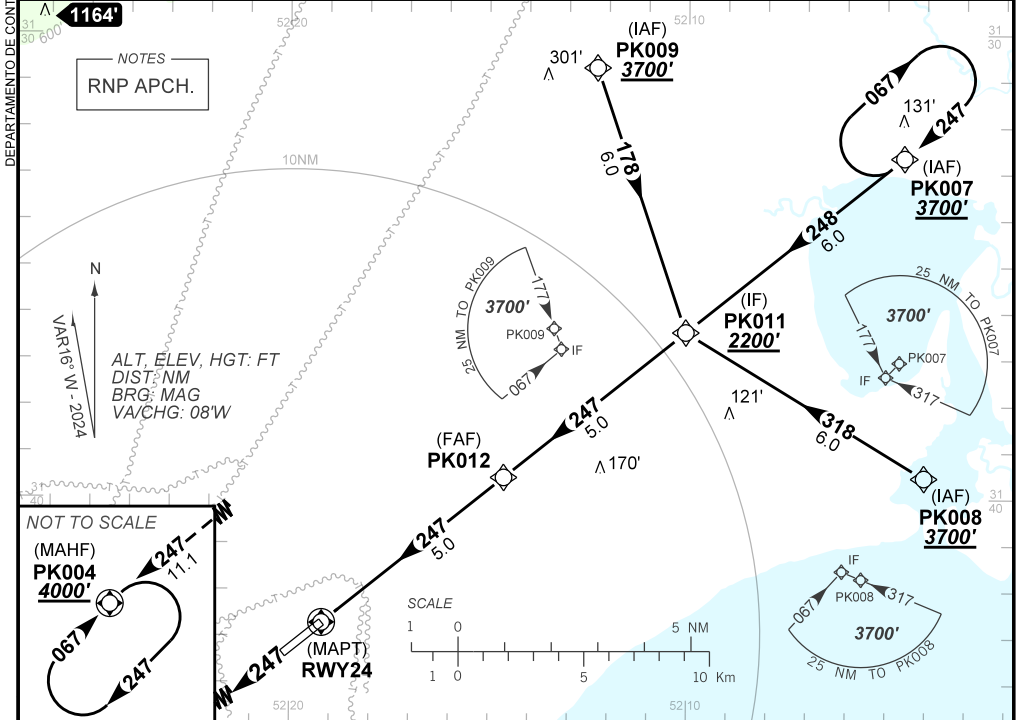
AD ELEV: 59'

RNP Z RWY 24

ATIS NIL	APP NIL	AFIS PELOTAS 125.90	GND NIL
-------------	------------	------------------------	------------

TEMP LNAV/VNAV MIN -10°C / MAX 50°C	FINAL CRS 247°	FAF: 1700'	LNAV/VNAV DA / (OCH): 391' / (336')	LNAV MDA / (OCH): 460' / (410')
---	--------------------------	----------------------	---	---

APCH Perdida: Subir para **4000'**. Manter rumo **247** direto PK004 para espera.
Missed APCH: Climb to **4000'**. Maintain **247** course direct PK004 for holding.



RWY24	1.1	2.0	3.0	4.0	PK012	Ground Speed (KT)	090	110	130	150	170	190
ALT	460	742	1060	1379	1700	FPM	500	600	700	800	900	NA
(HGT)	410	687	1005	1324	1645	FAF-MAPT	NIL					

STRAIGHT-IN	CAT	A	B	C	D	E	
	DA / (OCH)	391' / (336')					NA
LNAV/VNAV	ALS/NO ALS/ RVR ALS (m)	NIL / 1500 / NIL					
LNAV	MDA / (OCH)	460' / (410')			NIL / 1900 / NIL		
	ALS/NO ALS/ RVR ALS (m)	NIL / 1600 / NIL			NIL / 1900 / NIL		
CIRCLING	MDA / (OCH)	NA					
	VIS (m)						

CHANGES: LAYOUT, PROC, THR, ELEV, VAR.