

**INSTRUMENT APPROACH
CHART (IAC)**

CACOAL / Cacoal (SSKW)

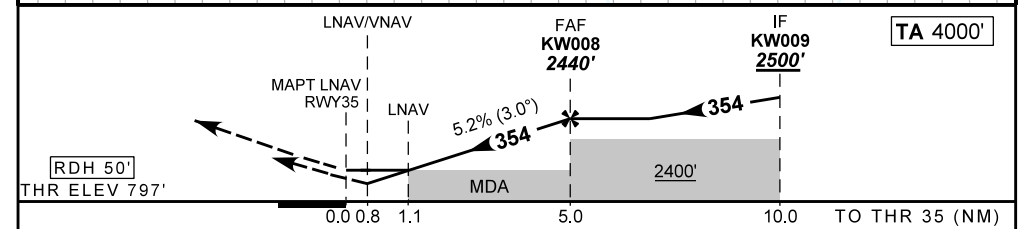
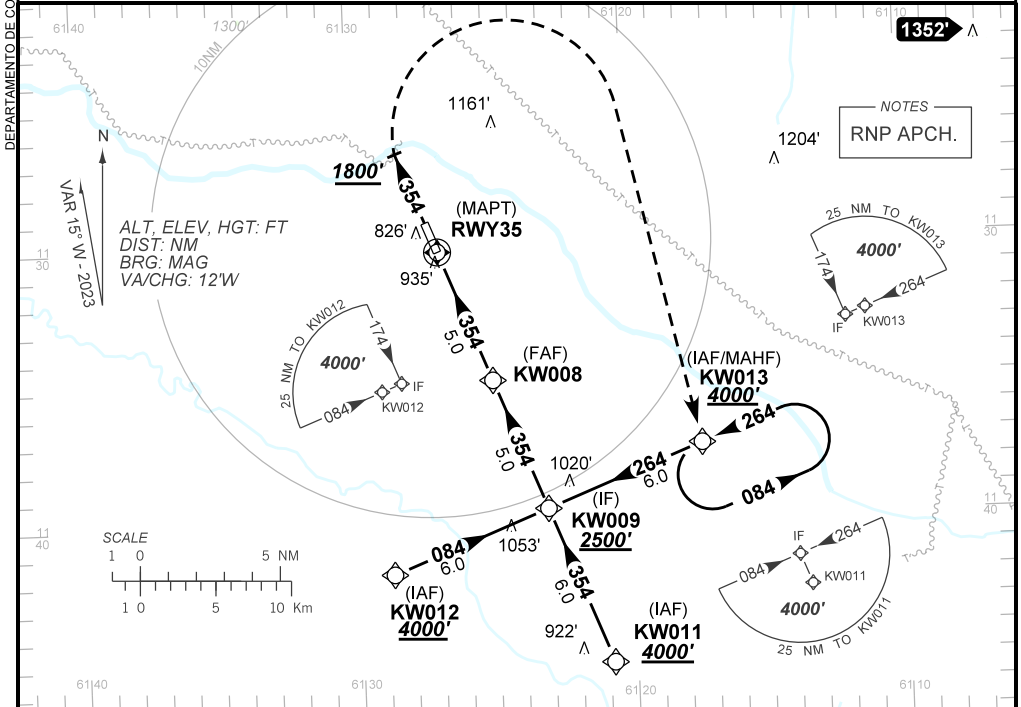
AD ELEV: 817'

RNP RWY 35

ATIS NIL	APP NIL	AFIS CACOAL 131.10	GNDC NIL
-------------	------------	-----------------------	-------------

TEMP LNAV/VNAV MIN -10°C / MAX 50°C	FINAL CRS 354°	FAF: 2440'	LNAV/VNAV DA / (OCH): 1096' / (299')	LNAV MDA / (OCH): 1190' / (400')
---	--------------------------	----------------------	--	--

APCH Perdida: Subir para **4000'**. Manter rumo **354** até **1800'**. Após, curvar à DIREITA direto KW013 para espera.
Missed APCH: Climb to **4000'**. Maintain course **354** until **1800'**. After, turn RIGHT direct KW013 for holding.



RWY35	1.1	2.0	3.0	4.0	KW008	Ground Speed (KT)	090	110	130	150	170	190
ALT	1190	1484	1802	2121	2440	FPM	500	600	700	800	900	NA
(HGT)	400	687	1005	1324	1643	FAF-MAPT	NIL					

STRAIGHT-IN	CAT	A	B	C	D	E	
	DA / (OCH)	1096' / (299')					NA
LNAV/VNAV	ALS/NO ALS/ RVR ALS (m)	NIL / 1400 / NIL					
	MDA / (OCH)	1190' / (400')					
LNAV	ALS/NO ALS/ RVR ALS (m)	NIL / 1600 / NIL			NIL / 1800 / NIL		
	CIRCLING	MDA / (OCH)	NA				
	VIS (m)						

CHANGES: MINM OPR. PROC. VAR.