

**INSTRUMENT APPROACH
CHART (IAC)**

**RIO DE JANEIRO / Santos Dumont (SBRJ)
RNP Y RWY 20L (AR)**

AD ELEV: 10'

CAT (A, B, C)

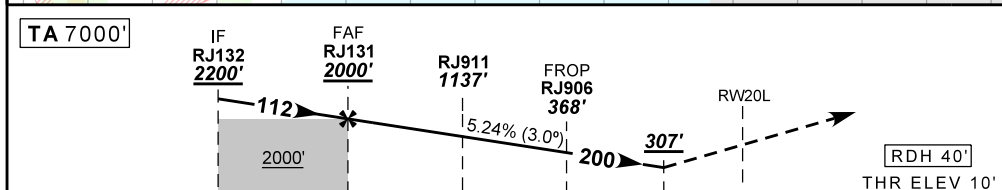
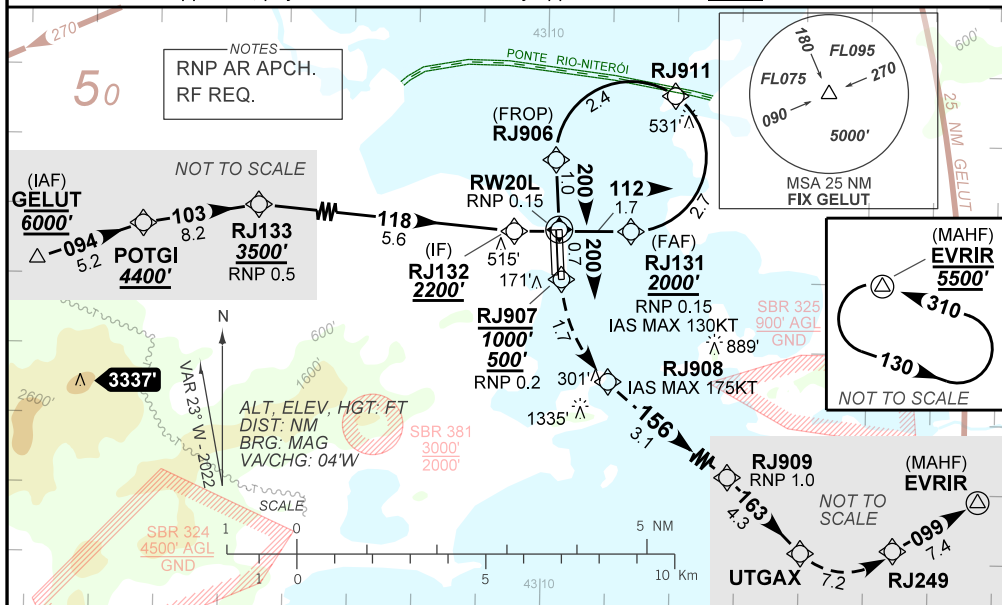
D-ATIS 132.65	APP RIO 133.30 124.95 134.95 126.20 129.80 128.90 119.35 125.95 134.40 121.25	TWR RIO 118.70	GNDC RIO 121.70
-------------------------	---	--------------------------	---------------------------

TEMP LNAV/VNAV MIN 10°C / MAX 45°C	FINAL CRS 200°	FAF: 2000'	RNP 0.15 DA / (OCH): 307' / (297')	N/A
--	--------------------------	----------------------	--	------------

APCH Perdida: 1) Subir para **5500'**. Manter rumo **200** até RJ907. Após, curvar à ESQUERDA para RJ908. Manter rumo **156** até RJ909. Curvar à DIREITA, rumo **163** até UTGAX. Após, curvar à ESQUERDA até RJ249. Manter rumo **099** até EVRIR para espera. 2) RNP menor que 1.0 até RJ909.

Missed APCH: 1) Climb to **5500'**. Maintain course **200** until RJ907. After, turn LEFT to RJ908. Maintain course **156** until RJ909. Turn RIGHT, on course **163** until UTGAX. After, turn LEFT until RJ249. Maintain course **099** until EVRIR for holding. 2) RNP below 1.0 until RJ909.

RMK: Em caso de aproximação perdida, atentar para restrição superior compulsória de **1000'** em RJ907. In case of missed approach, pay attention to the mandatory upper restriction of **1000'** in RJ907.



TO THR 20L (NM)	7.8	6.1	3.4	1.0	0.8	0.0
-----------------	-----	-----	-----	-----	-----	-----

RJ131	5.0	RJ911	2.0	RJ906	0.8	RW20L	Ground Speed (KT)	090	100	110	120	130	140
2000	1642	1137	687	368	307	ALT	FPM	500	550	600	650	NA	
1990	1632	1127	677	358	297	(HGT)	FAF-MAPT	NIL					

STRAIGHT-IN	CAT	A	B	C	D	E
	DA / (OCH)	307' / (297')			NA	
RNP 0.15	ALS/NO ALS/ RVR ALS (m)	NIL / 1600 / NIL			NA	

**AUTORIZAÇÃO ESPECIAL PARA AERONAVE E TRIPULAÇÃO REQUERIDA
SPECIAL AUTHORIZATION FOR AIRCRAFT AND CREW REQUIRED**

DEPARTAMENTO DE CONTROLE DO ESPAÇO AÉREO

CHANGES: NEW CHART.