

**INSTRUMENT APPROACH
CHART (IAC)**

CURITIBA / Afonso Pena, INTL (SBCT)

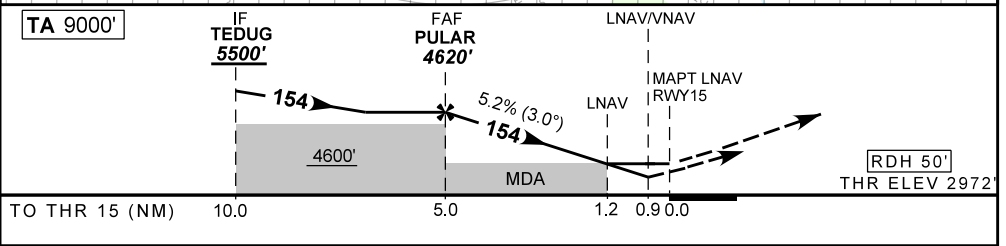
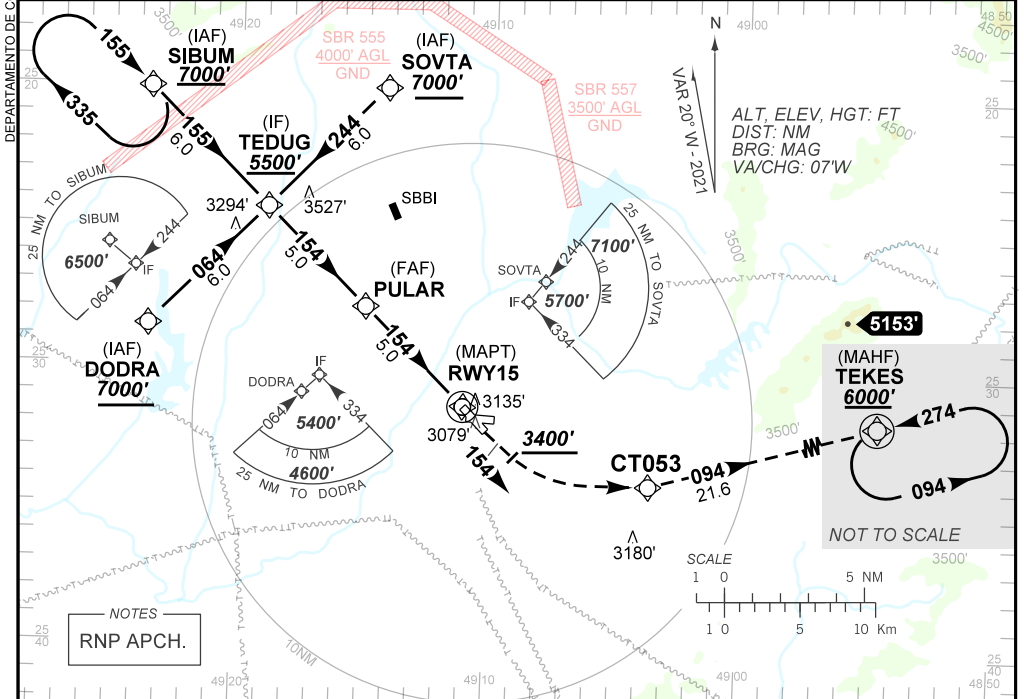
AD ELEV: 2989'

RNP Z RWY 15

D-ATIS 127.80	APP CURITIBA 119.95 119.70 120.65 120.95 129.55 133.15			TWR CURITIBA 118.15	GNDC CURITIBA 121.90
TEMP LNAV/VNAV MIN -10°C / MAX 55°C	FINAL CRS 154°	FAF: 4620'	LNAV/VNAV DA / (OCH): 3305' / (340')	LNAV MDA / (OCH): 3390' / (420')	

APCH Perdida: Subir para **6000'**. Manter rumo **154°** até cruzar **3400'**. Então, curvar à ESQUERDA direto CT053. Manter rumo **094°** até TEKES para espera.

Missed Approach: Climb to **6000'**. Maintain course **154°** until passing **3400'**. Then, turn LEFT direct to CT053. Maintain course **094°** up to TEKES for holding.



	PULAR	4.0	3.0	2.0	1.2	RWY15	Ground Speed (KT)	090	110	130	150	170	190
	4620	4296	3977	3659	3390	ALT	FPM	500	600	700	800	900	NA
	1648	1324	1005	687	418	(HGT)	FAF-MAPT	NA					

STRAIGHT-IN	CAT	A	B	C	D	E	
	DA / (OCH)	3305' / (340')					NA
LNAV/VNAV	ALS/NO ALS/ RVR ALS (m)	800 / 1500 / NIL					
LNAV	MDA / (OCH)	3390' / (420')					
	ALS/NO ALS/ RVR ALS (m)	800 / 1600 / NIL		1200 / 1900 / NIL			
CIRCLING	MDA / (OCH)	NA					
	VIS (m)	NA					

CHANGES: IDENT LAYOUT- VAR TAA