

**INSTRUMENT APPROACH  
CHART (IAC)**

**SANTA MARIA / Santa Maria, MIL (SBSM)**

**ILS X RWY 11**

**AD ELEV: 289'**

ATIS <b>127.75</b>	APP SANTA MARIA <b>119.35 121.35</b>	TWR SANTA MARIA <b>118.30 118.85</b>	AFIS SANTA MARIA <b>119.35 121.35 118.30</b>	GNDC <b>NIL</b>
LOC ISM <b>110.30 MHz</b>	FINAL CRS <b>109°</b>	FAF: <b>1930'</b>	CAT I DA / (OCH): <b>REFER TO MNM</b>	<b>N/A</b>

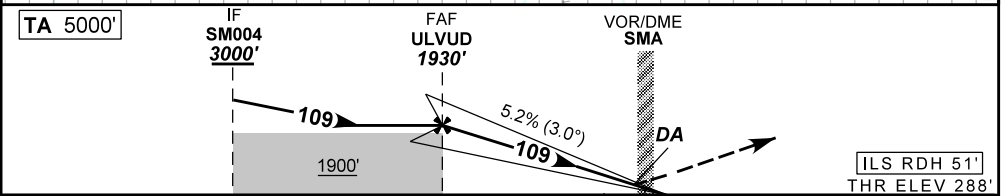
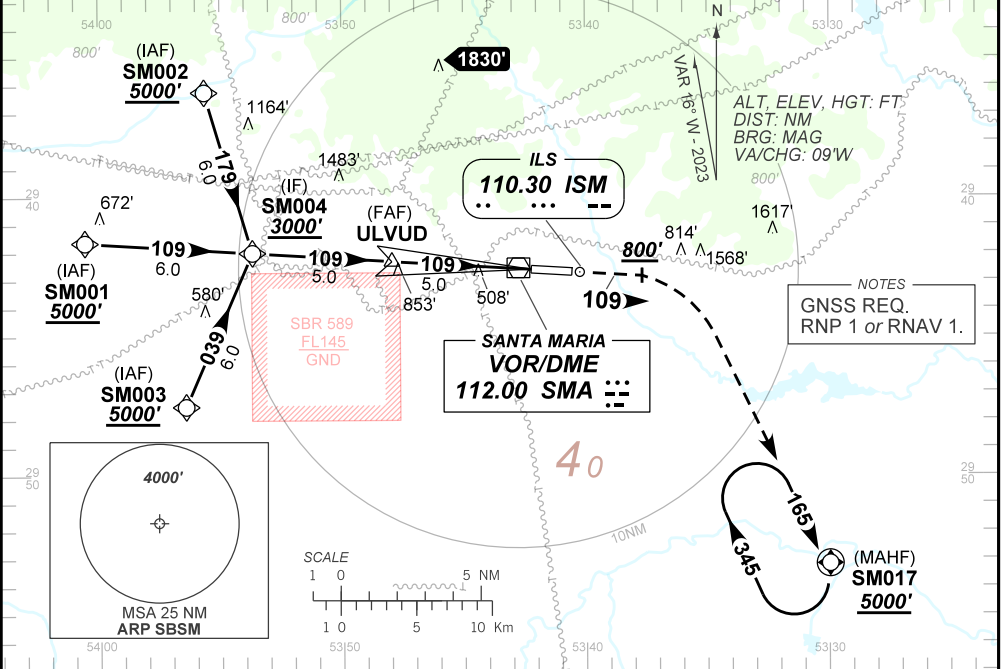
APCH Perdida: Subir para **5000'**. Manter rumo **109°** até **800'**. Após, curvar à DIREITA direto SM017 para espera.

Missed APCH: Climb to **5000'**. Maintain course **109°** up to **800'**. Then, turn RIGHT direct SM017 for holding.

RMK: (\*) VIS RVR ALS 550m para aproximação utilizando Diretor de Voo, Piloto automático ou Head-Up Display (HUD).

(\*) RVR VIS ALS 550m for approach using a Flight Director, Autopilot or Head-Up Display (HUD).

DEPARTAMENTO DE CONTROLE DO ESPAÇO AÉREO



TO THR 11 (NM)	10.0	5.0	0.5	0.0
TO SMA (DME)	9.5	4.5	0.0	0.0

NA	RWY 11	Ground Speed (KT)	090	110	130	150	170	190
NA	ALT	FPM	500	600	700	800	900	1000
NA	(HGT)	FAF-MAPT	NIL					

STRAIGHT-IN	CAT	A	B	C	D	E
CAT I	DA / (OCH)	488' / (200')				761' / (473')
	ALS / NO ALS / RVR ALS (m)	800 / 1200 / 700*				1500 / 2200 / 1400
CIRCLING	MDA / (OCH)	NA				
	VIS (m)	NA				

CHANGES: LAYOUT.