

INSTRUMENT APPROACH  
CHART (IAC)

BELO HORIZONTE / Tancredo Neves, INTL (SBCF)

AD ELEV: 2721'

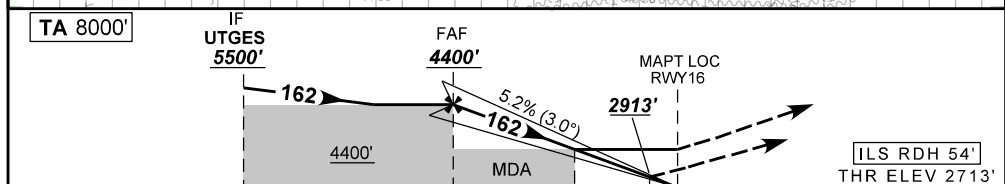
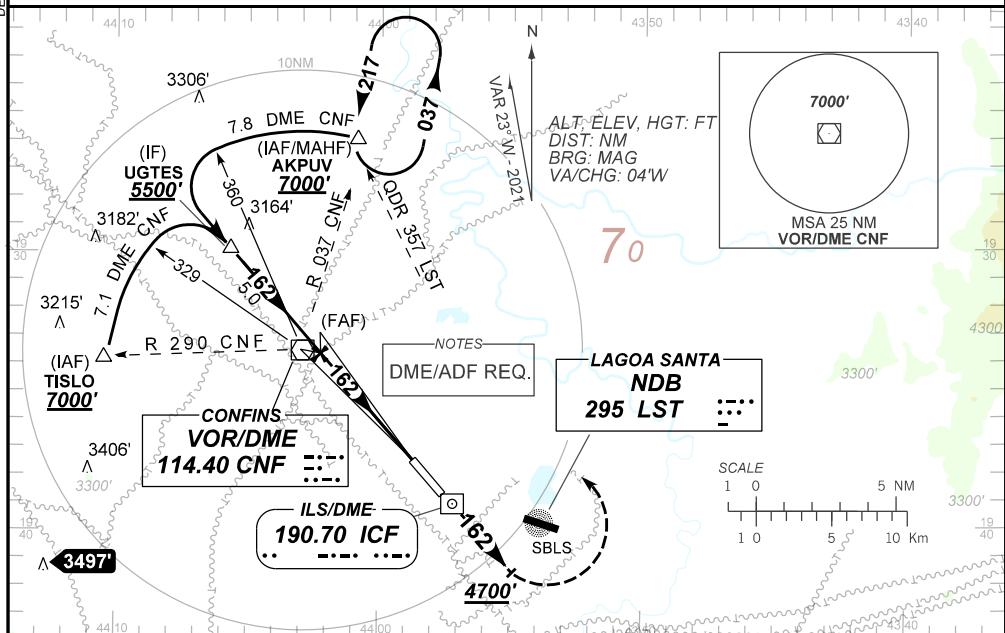
ILS W or LOC W RWY 16

DEPARTAMENTO DE CONTROLE DO ESPAÇO AÉREO

D-ATIS <b>127.85</b>	APP BELO HORIZONTE <b>119.10 119.30 119.65 120.20 128.55 129.10 129.40</b>			TWR CONFINES <b>118.20</b>	GND C CONFINES <b>121.90</b>
LOC ICF <b>109.70 MHz</b>	FINAL CRS <b>162°</b>	FAF: <b>4400'</b>	CAT I DA / (OCH): <b>2913' / (200')</b>	LOC MDA / (OCH): <b>3230' / (520')</b>	

APCH Perda: Subir para **7000'**. Manter rumo **162** até **4700'**. Após, curvar à ESQUERDA direto NDB Lagoa Santa. Após, curvar à DIREITA QDR **357** LST para espera em AKPUV.  
Missed APCH: Climb to **7000'**. Maintain course **162** until **4700'**. After, turn LEFT direct Lagoa Santa NDB. After, turn RIGHT LST **357** QDR for holding at AKPUV.

RMK: 1) (\*) VIS RVR ALS 550m para APCH utilizando Diretor de Voo, Piloto Automático ou Head-Up Display (HUD).  
2) Proibido iniciar aproximação perdida antes do MAPT.  
1) (\*) VIS RVR ALS 550m for APCH using a Flight Director, Autopilot, or Head-Up Display (HUD).  
2) Prohibited starting missed approach before MAPT.



TO THR 16 (NM)	10.0	5.0	1.5	0.5	0.0
TO ICF (DME)	12.1	7.1	3.6	2.6	2.1

	ICF01	4.0	3.0	2.0	1.5	RWY16	Ground Speed (KT)	090	110	130	150	170	190
	4400	4041	3722	3404	3230	ALT	FPM	500	600	700	800	900	NA
	1687	1328	1009	691	520	(HGT)	FAF-MAPT	NA					

STRAIGHT-IN	CAT	A		B		C		D		E	
		DA / (OCH)		2913' / (200')		3230' / (520')				NA	
LOC	CAT	ALS/NO ALS/ RVR ALS (m)		800 / 1200 / 700(*)							
		MDA / (OCH)		800 / 1600 / NIL		1600 / 2400 / NIL					

CHANGES: PROC