

**INSTRUMENT APPROACH
CHART (IAC)**

CANOAS / Campo Nossa Senhora de Fátima, MIL (SBCO)

VOR Y RWY 31

(CAT A, B)

AD ELEV: 26'

ATIS NIL	APP PALEGRE 119.00 120.10 120.55 128.90	TWR CANOAS 118.50 122.80 (MIL)	GNDC CANOAS 121.70
-------------	--	-----------------------------------	-----------------------

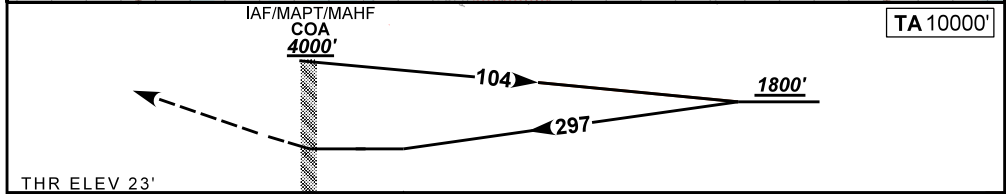
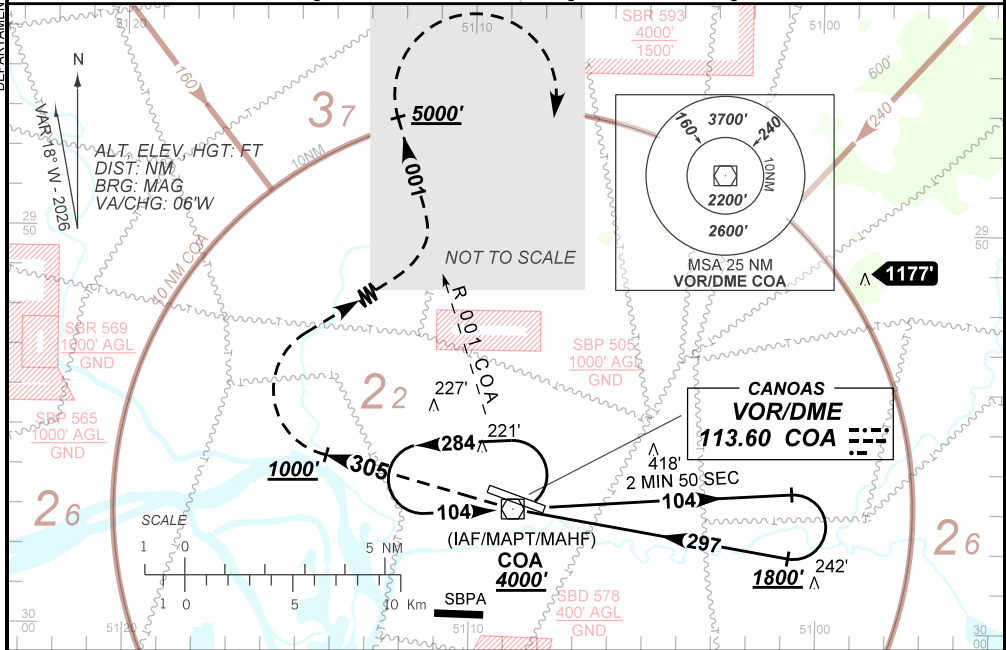
VOR COA 113.60 MHz	FINAL CRS 297°	N/A	N/A	VOR MDA / (OCH): 540' / (520')
-----------------------	-------------------	-----	-----	-----------------------------------

APCH Perdida: Subir para **5000'**. Manter proa **305** até **1000'**. Após, curvar à DIREITA para interceptar a RDL **001** do VOR COA até **5000'**. Então, curvar à DIREITA direto VOR COA para espera.

Missed APCH: Climb to **5000'**. Maintain heading **305** until **1000'**. After, turn RIGHT to intercept **001** RDL COA VOR until **5000'**. Then, turn RIGHT direct to COA VOR for holding.

RMK: Não autorizado esperas simultâneas sobre Canoas e Porto Alegre no mesmo nível.
Unauthorized simultaneous holding over Canoas and Porto Alegre on the same flight level.

DEPARTAMENTO DE CONTROLE DO ESPAÇO AEREO



THR ELEV 23'

RWY31	NIL	Ground Speed (KT)	090	110	130	150	170	190
ALT	NIL	FPM	630		NA			
(HGT)	NIL	FAF-MAPT	NA					

STRAIGHT-IN	CAT	A	B	C	D	E
VOR	MDA / (OCH)	540' / (520')		NA		
	ALS/NO ALS/ RVR ALS (m)	NIL / 1600 / NIL				
CIRCLING	MDA / (OCH)	NA				
	VIS (m)					

CHANGES: PROC. TA. VAR.