

**INSTRUMENT APPROACH
CHART (IAC)**

RIO DE JANEIRO / Santa Cruz, MIL (SBSC)

AD ELEV: 10'

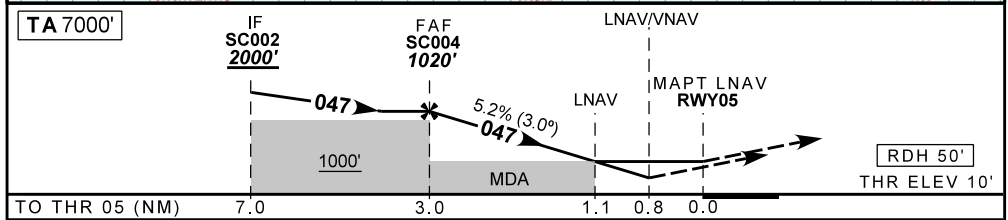
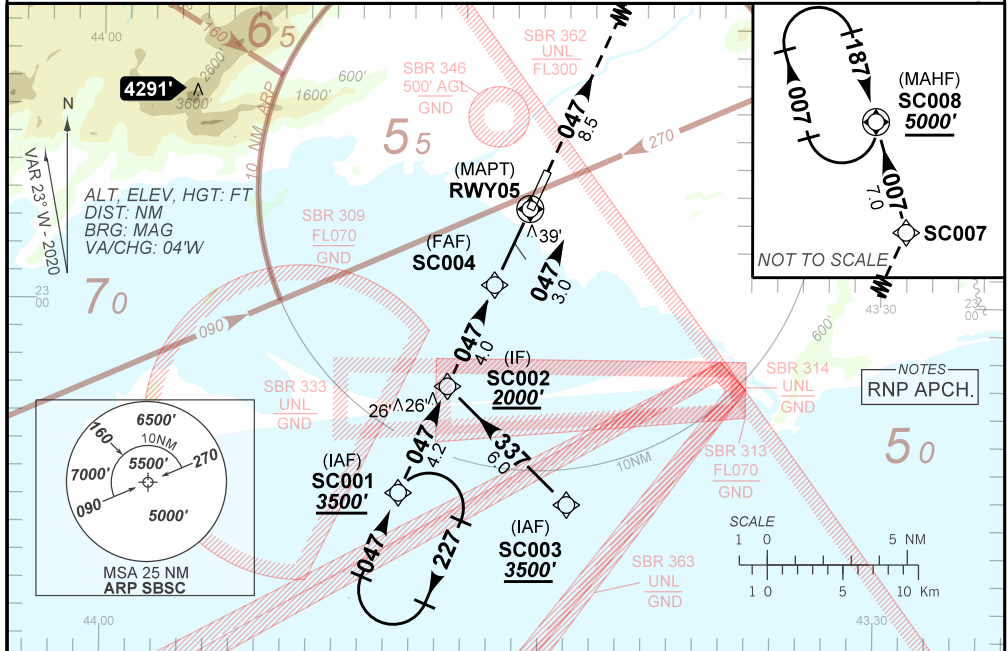
RNP Y RWY 05

ATIS NIL	133.70 132.50 120.55 124.95	APP RIO 134.40 121.25 134.95 129.80	119.00 125.95	TWR SANTA CRUZ 118.80 122.90	GND C SANTA CRUZ 121.80
-------------	--------------------------------	---	------------------	---------------------------------	----------------------------

N/A	FINAL CRS 047°	FAF: 1020'	LNAV/VNAV DA / (OCH): 320' / (310')	LNAV MDA / (OCH): 460' / (450')
-----	-------------------	---------------	--	------------------------------------

APCH Perdida: Subir para **5000'**, gradiente MNM 4.0%. Manter rumo **047** até SC007. Após, curvar à ESQUERDA no rumo **007** até SC008 para espera.
 Missed APCH: Climb to **5000'**, MNM gradient 4.0%. Maintain course **047** up to SC007. Then, turn LEFT on course **007** up to SC008 for holding.

RMK: Para sistemas BARO-VNAV não compensados, procedimento LNAV/VNAV não autorizado abaixo de -20°C ou acima de 50°.
 For uncompensated systems BARO-VNAV, LNAV/VNAV procedure not authorized below -20°C or above 50°.



TO THR 05 (NM)	7.0	3.0	1.1	0.8	0.0
	SC004	2.0	1.1	RWY05	
	1020	698	460	ALT	
	1010	688	450	(HGT)	
				KT	90 110 130 150 170 190
				FPM	500 600 700 800 900 1000
				FAF-MAPT	NA

STRAIGHT-IN	CAT	A	B	C	D	E
	DA / (OCH)	320' / (310')				NA
LNAV/VNAV	ALS/NO ALS/ RVR ALS (m)	NIL / 1400 / NIL				NA
	MDA / (OCH)	460' / (450')				
LNAV	ALS/NO ALS/ RVR ALS (m)	NIL / 1600 / NIL		NIL / 1800 / NIL		
	MDA / (OCH)	NA				
CIRCLING	MDA / (OCH)	NA				
	VIS (m)	NA				

CHANGES: EAC IDENT LAYOUT