

**INSTRUMENT APPROACH  
CHART (IAC)**

**CURITIBA / Afonso Pena, INTL (SBCT)**

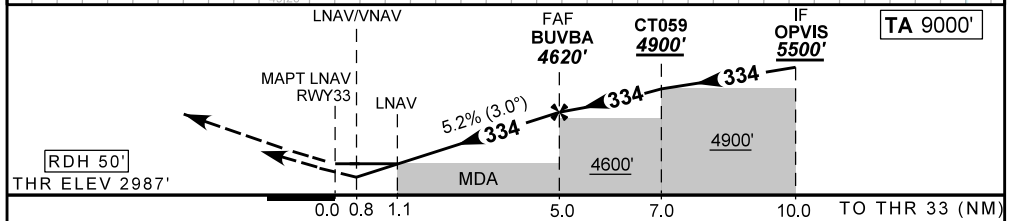
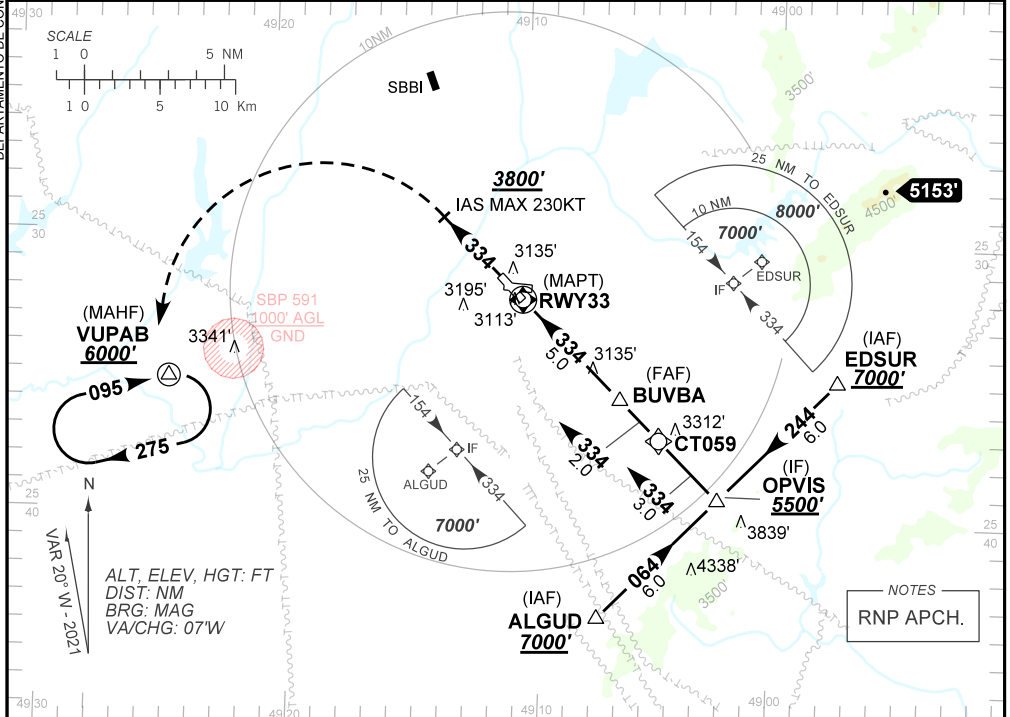
**AD ELEV: 2989'**

**RNP Z RWY 33**

D-ATIS <b>127.80</b>	APP CURITIBA <b>119.95 119.70 120.65 120.95 129.95 133.15</b>	TWR CURITIBA <b>118.15</b>	GNDC CURITIBA <b>121.90</b>
TEMP LNAV/VNAV <b>MIN -10°C / MAX 55°C</b>	FINAL CRS <b>334°</b>	FAF: <b>4620'</b>	LNAV/VNAV DA / (OCH): <b>3280' / (300')</b>
LNAV MDA / (OCH): <b>3390' / (410')</b>			

APCH Perdida: Subir para **6000'**. Manter proa **334°** até **3800'**. Após, curvar à ESQUERDA direto VUPAB para espera.

Missed APCH: Climb to **6000'**. Maintain heading **334°** until **3800'**. After, turn LEFT direct to VUPAB for holding.



RWY33	1.1	2.0	3.0	4.0	BUVBA		Ground Speed (KT)	090	110	130	150	170	190
ALT	3390	3674	3992	4311	4620		FPM	500	600	700	800	900	NA
(HGT)	410	687	1005	1324	1633		FAF-MAPT	NIL					

STRAIGHT-IN	CAT	A	B	C	D	E	
	DA / (OCH)	3280' / (300')					NA
LNAV/VNAV	ALS/NO ALS/ RVR ALS (m)	NIL / 1400 / NIL					
	MDA / (OCH)	3390' / (410')					
LNAV	ALS/NO ALS/ RVR ALS (m)	NIL / 1600 / NIL		NIL / 1900 / NIL			
	MDA / (OCH)	NA					
CIRCLING	MDA / (OCH)	NA					
	VIS (m)	NA					

DEPARTAMENTO DE CONTROLE DO ESPAÇO AÉREO

CHANGES: IDENT LAYOUT: VAR