

**INSTRUMENT APPROACH
CHART (IAC)**

CACOAL / Cacoal (SSKW)

AD ELEV: 817'

RNP RWY 17

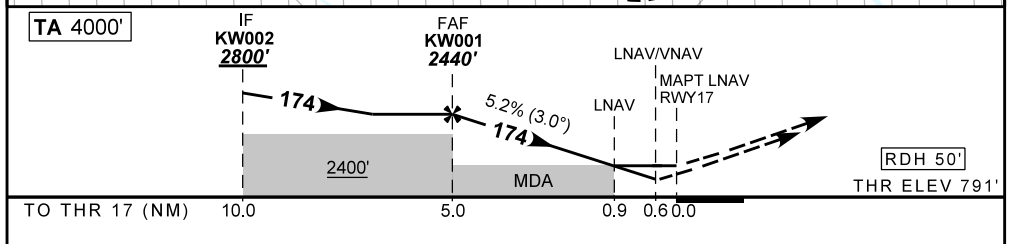
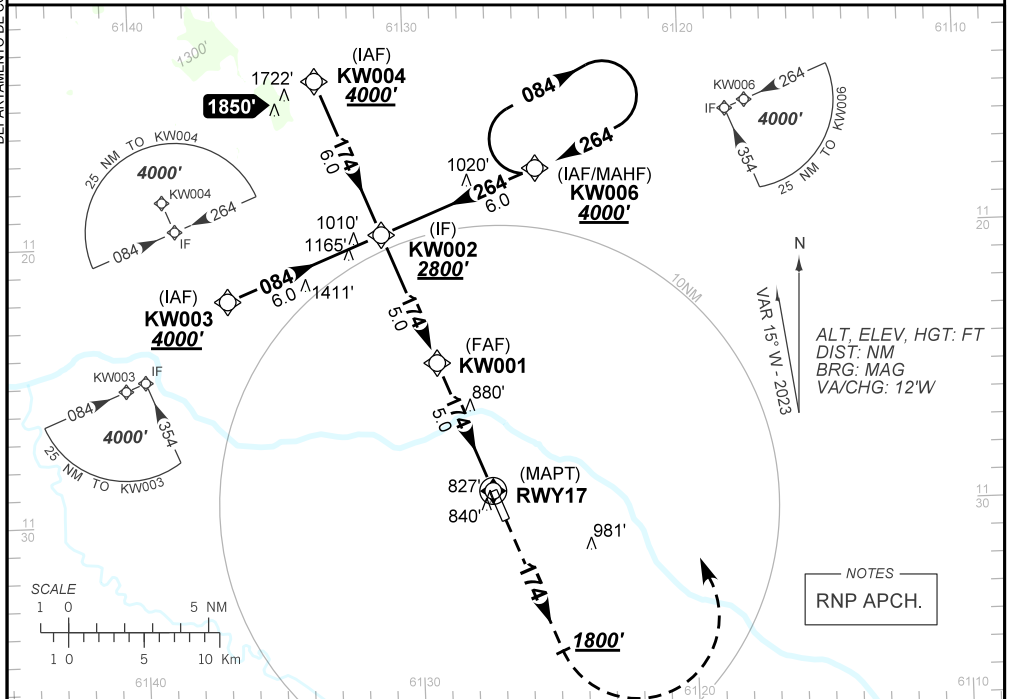
ATIS NIL	APP NIL	AFIS CACOAL 131.10	GNDC NIL
-------------	------------	-----------------------	-------------

TEMP LNAV/VNAV MIN -20°C / MAX 50°C	FINAL CRS 174°	FAF: 2440'	LNAV/VNAV DA / (OCH): 1041' / (250')	LNAV MDA / (OCH): 1130' / (340')
--	-------------------	---------------	---	-------------------------------------

APCH Perdida: Subir para **4000'**. Manter rumo **174** até **1800'**. Após, curvar à ESQUERDA direto KW006 para espera.

Missed APCH: Climb to **4000'**. Maintain course **174** until **1800'**. After, turn LEFT direct KW006 for holding.

DEPARTAMENTO DE CONTROLE DO ESPAÇO AÉREO



KW001	4.0	3.0	2.0	1.0	0.9	RWY17	Ground Speed (KT)	090	110	130	150	170	190	
	2440	2115	1796	1478	1159	1130	ALT	500	600	700	800	900	NA	
	1649	1324	1005	687	368	340	(HGT)	FAF-MAPT						NIL

STRAIGHT-IN	CAT	A	B	C	D	E
	LNAV/VNAV	DA / (OCH)	1041' / (250')			
	ALS/NO ALS/ RVR ALS (m)	NIL / 1300 / NIL				
LNAV	MDA / (OCH)	1130' / (340')				
	ALS/NO ALS/ RVR ALS (m)	NIL / 1600 / NIL				
CIRCLING	MDA / (OCH)	NA				
	VIS (m)					

CHANGES: MNM OPR. PROC. VAR.