

**INSTRUMENT APPROACH  
CHART (IAC)**

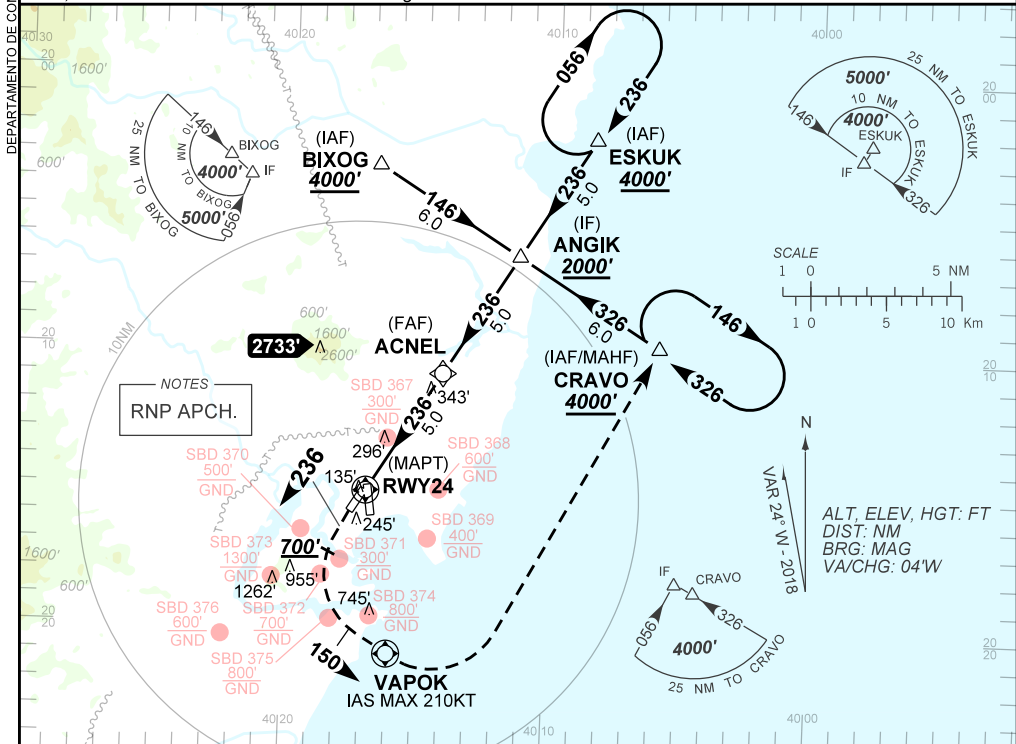
**VITÓRIA / Eurico de Aguiar Salles (SBVT)**

**AD ELEV: 34'**

**RNP V RWY 24**

ATIS <b>127.575</b>	APP VITÓRIA <b>119.85</b>	TWR VITÓRIA <b>118.10</b>	GND VITÓRIA <b>121.95</b>
TEMP LNAV/VNAV <b>MIN 0°C / MAX 40°C</b>	FINAL CRS <b>236°</b>	FAF: <b>1660'</b>	LNAV/VNAV <b>DA / (OCH): REFER TO MNM</b>
		LNAV <b>MDA / (OCH): 600' / (590')</b>	

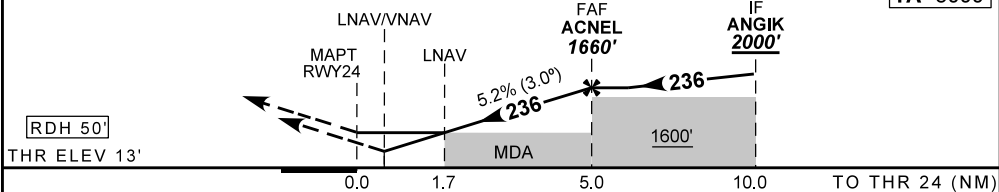
APCH Perdida: Subir para **4000'**. Manter rumo **236** até passar **700'**. Curvar à ESQUERDA, rumo **150** para VAPOK. Após, curvar à ESQUERDA direto CRAVO para espera.  
Missed APCH: Climb to **4000'**. Maintain course **236** until passing **700'**. Turn LEFT, course **150** to VAPOK. After, turn LEFT direct to CRAVO for holding.



NOTES  
RNP APCH.

ALT, ELEV, HGT: FT  
DIST: NM  
BRG: MAG  
VA/CHG: 04'W

**TA 5000'**



RWY24	1.7	2.0	3.0	4.0	ACNEL		Ground Speed (KT)	090	110	130	150	170	190
ALT	600	700	1018	1337	1660		FPM	500	600	700	800	900	NA
(HGT)	590	687	1005	1324	1647		FAF-MAPT	NA					

STRAIGHT-IN	CAT	A	B	C	D	E	
	DA / (OCH)	540' / (527')					NA
	ALS/NO ALS/ RVR ALS (m)	NIL / 1600 / NIL					
	DA / (OCH)	460' / (447')					
Missed APCH Climb Gradient: 3.5%	ALS/NO ALS/RVR ALS (m)	NIL / 1600 / NIL					
LNAV	MDA / (OCH)	600' / (590')					
	VIS (m)	NIL / 1600 / NIL					