

STANDARD ARRIVAL CHART
INSTRUMENT (STAR)

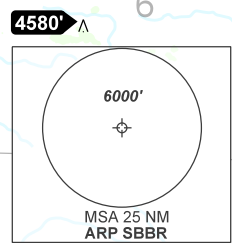
BRASÍLIA / Pres. Juscelino Kubitschek, INTL (SBBR)
RWY 29L / 29R

RNAV EDVIV 2B - MOPDA 2B

AD ELEV: 3498'

TA 7000'	D-ATIS 127.80	ACC BRASÍLIA 125.05 123.75	APP BRASÍLIA 129.60 119.50 120.30 120.00	TWR BRASÍLIA 118.10 118.45 118.75
----------	---------------	----------------------------	--	-----------------------------------

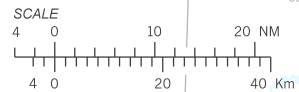
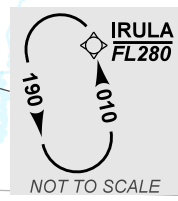
DEPARTAMENTO DE CONTROLE DO ESPAÇO AÉREO



- RMK*
- EDVIV MNM ALT poderá ser 7000' de acordo com o IAP em uso / EDVIV MNM ALT may be 7000' according to the IAP in use.
 - DME críticos: APO, CAL, FSA, GMM, GNV, LUZ e ULD / Criticals DME: APO, CAL, FSA, GMM, GNV, LUZ and ULD.
 - Para aeronaves não equipadas com GNSS: vigilância ATS requerido / For aircraft non equipped with GNSS: ATS surveillance required.

NOTES
GNSS REQ or DME/DME/IRU REQ.
RNP 1 or RNAV 1.

COMMUNICATION FAILURE
Acionar transponder A7600, completar a chegada até o IAF e executar o procedimento em uso pelo ATC.
Set transponder A7600, complete arrival until IAF and execute the procedure in use by ATC.



N
VAR 22° W - 2023
ALT, ELEV, HGT: FT
DIST: NM
BRG: MAG
VA/CHG: 06°W

CHANGES: RMK. WPT.