

INSTRUMENT APPROACH
CHART (IAC)

PALMAS / Brigadeiro Lysias Rodrigues (SBPJ)

AD ELEV: 774'

VOR Z RWY 14

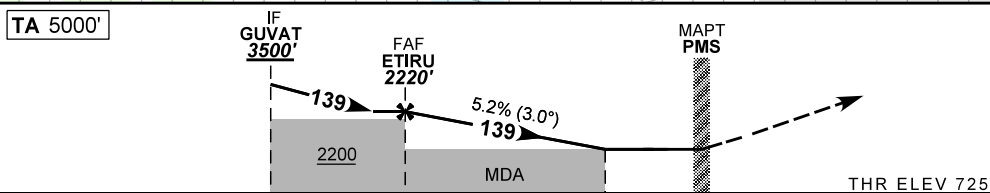
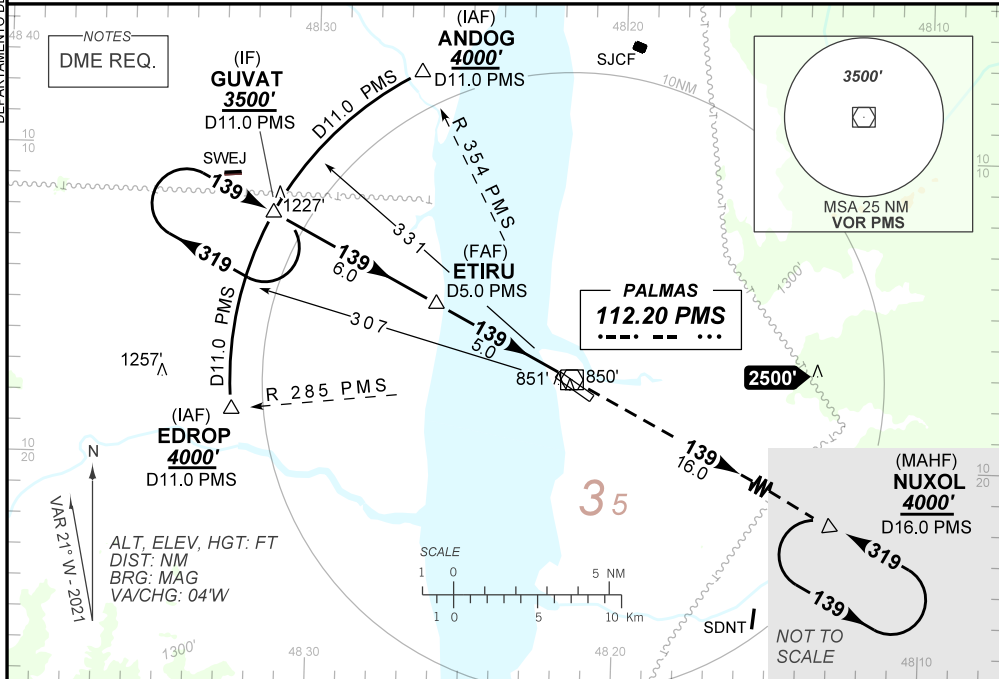
ATIS NIL	APP PALMAS 119.00	TWR PALMAS 118.00	GNDC NIL
-------------	----------------------	----------------------	-------------

VOR PMS 112.20 MHz	FINAL CRS 139°	FAF: 2220'	N/A	VOR MDA / (OCH): 1210' / (490')
-----------------------	-------------------	---------------	-----	------------------------------------

APCH Perdida: Subir para **4000'**. Manter a RDL **139** VOR PMS até NUXOL para espera.
Missed APCH: Climb to **4000'**. Maintain **139** PMS VOR RDL until NUXOL for holding.

RMK: NIL.

DEPARTAMENTO DE CONTROLE DO ESPAÇO AÉREO



TO RWY 14 (NM)	10.5	4.5	1.4	0.0
TO PMS (DME)	11.0	5.0	1.9	0.5

	ETIRU	4.0	3.0	2.0	1.4	RWY 14	Ground Speed (KT)	090	110	130	150	170	190
	2220	2049	1730	1412	1210	ALT	FPM	500	600	700	800	900	1000
	1495	1324	1005	687	490	(HGT)	FAF-MAPT	NA					

STRAIGHT-IN	CAT	A	B	C	D	E
	MDA / (OCH)	1210' / (490')				
VOR	ALS/NO ALS/ RVR ALS (m)	NIL / 1600 / NIL		NIL / 2300 / NIL		
CIRCLING	MDA / (OCH)	NA				
	VIS (m)					

CHANGES: IDENT, LAYOUT, MSA, PROC, VAR.