

**INSTRUMENT APPROACH  
CHART (IAC)**

**BRASÍLIA / Pres. Juscelino Kubitschek, INTL (SBBR)**

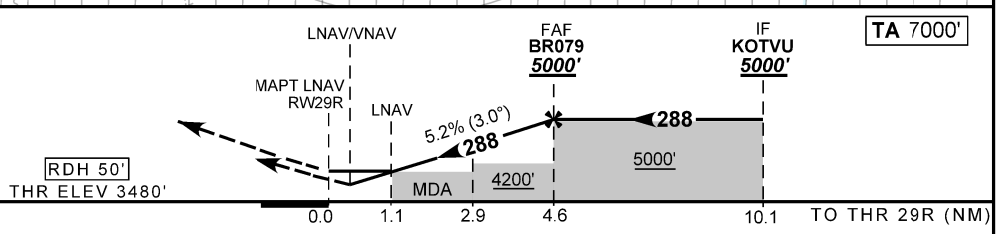
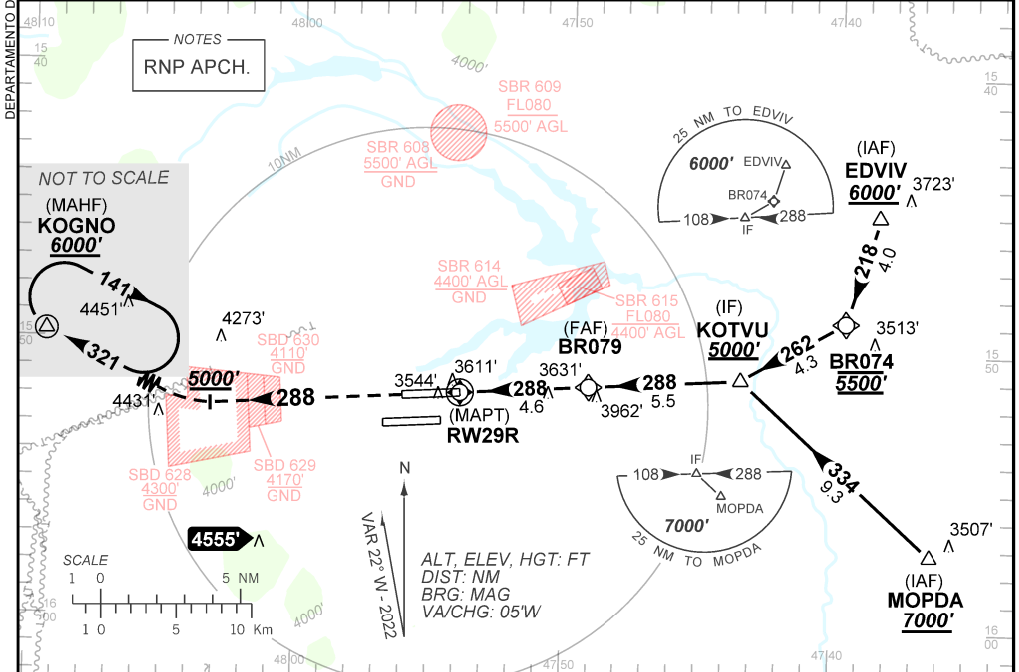
**RNP Y RWY 29R**

**AD ELEV: 3498'**

D-ATIS <b>127.80</b>	APP BRASÍLIA <b>119.70 129.60 119.20 120.00</b>	TWR BRASÍLIA <b>118.10 118.45 118.75</b>	GNDC BRASÍLIA <b>121.80 121.95</b>
TEMP LNAV/VNAV <b>MIN 0°C / MAX 50°C</b>	FINAL CRS <b>288°</b>	FAF: <b>5000'</b>	LNAV/VNAV DA / (OCH): <b>REFER TO MNM</b>
		MDA / (OCH): <b>3880' / (400')</b>	LNAV

APCH Perdida: Subir para **6000'**. Manter proa **288** até **5000'**. Após, curvar à DIREITA até KOGNO para espera.  
Missed APCH: Climb to **6000'**. Maintain heading **288** until **5000'**. After, turn RIGHT until KOGNO for holding.

RMK: Aproximações Paralelas Independentes / Independent Parallel Approaches.



RWY29R	1.1	2.0	2.9	4.0	BR079		Ground Speed (KT)	090	110	130	150	170	190
ALT	3880	4167	4459	4804	5000		FPM	500	600	700	800	900	NA
(HGT)	400	687	979	1324	1520		FAF-MAPT	NA					

STRAIGHT-IN	CAT	A	B	C	D	E	
	DA / (OCH)	3753' / (273')		3800' / (320')			
LNAV/VNAV	ALS/NO ALS/ RVR ALS (m)	1200 / 1300 / 1100		1200 / 1400 / 1100			
	MDA / (OCH)	3880' / (400')					
LNAV	ALS/NO ALS/ RVR ALS (m)	1200 / 1600 / 1100		1400 / 1800 / 1250			
	MDA / (OCH)						NA
CIRCLING	MDA / (OCH)						NA
	VIS (m)						NA

CHANGES: LAYOUT.

AIRAC AMDT 2207A1 14 JUL 22

SBBR\_IAC\_00D 1/1  
IAC RNP Y RWY 29R