

INSTRUMENT APPROACH
CHART (IAC)

ALTA FLORESTA / Aeroporto Piloto Osvaldo Marques Dias (SBAT)

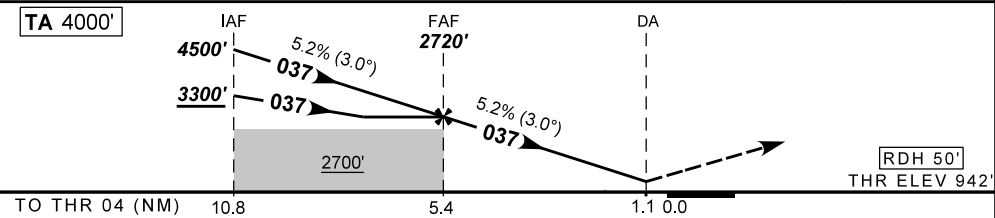
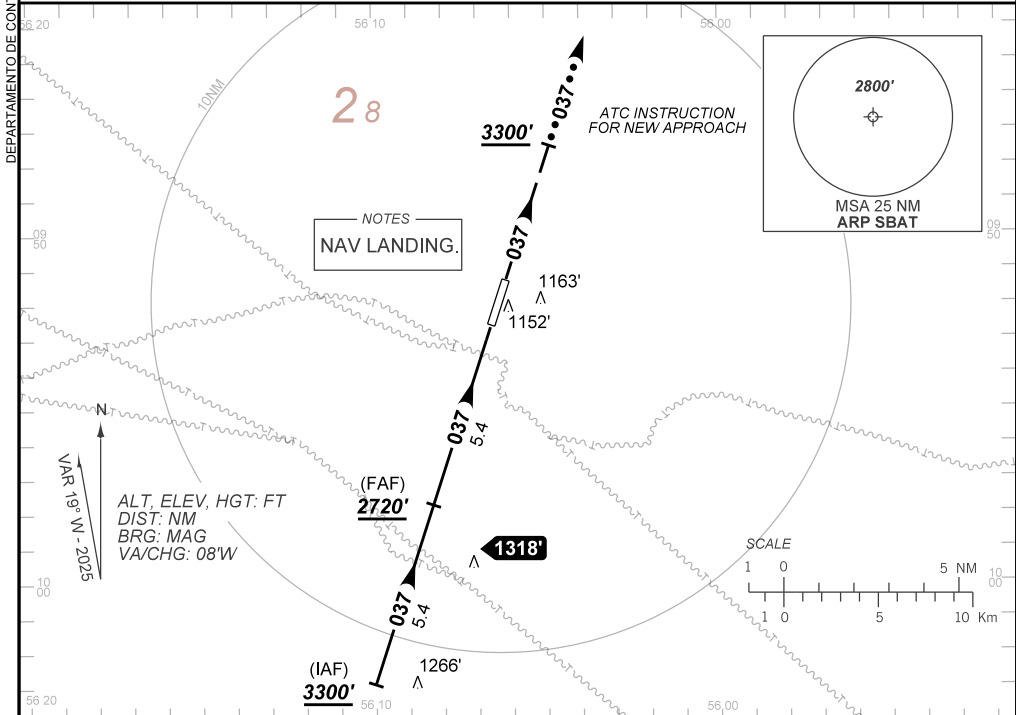
AD ELEV: 948'

USO EXCLUSIVO F-39
F-39 USE ONLY

NAV APV RWY 04

ATIS NIL	APP NIL	AFIS FLORESTA 126.60	GNDC NIL
TEMP LNAV/VNAV MIN 0°C / MAX 50°C	FINAL CRS 037°	FAF: 2720'	NAV APV DA / (OCH): 1331' / (389')
			N/A

APCH Perdida: Subir para **3300'** na proa **037°** e aguardar instruções ATC.
Missed APCH: Climb to **3300'** on heading **037°** and expect further ATC instructions.



	FAF	4.0	3.0	2.0	RWY04	Ground Speed (KT)	090	110	130	150	170	190
	2720	2266	1947	1629	ALT	FPM	500	600	700	800	900	1000
	1778	1324	1005	687	(HGT)	FAF-MAPT	NIL					

STRAIGHT-IN	CAT	ONLY CAT E
	DA / (OCH)	1331' / (389')
NAV APV	ALS/NO ALS/ RVR ALS (m)	NIL / 1800 / NIL
		NA
CIRCLING	MDA / (OCH)	NA
	VIS (m)	

CHANGES: NEW CHART.