

INSTRUMENT APPROACH  
CHART (IAC)

CRUZEIRO DO SUL / Cruzeiro do Sul, INTL (SBCZ)

VOR RWY 28

AD ELEV: 636'

ATIS NIL	APP NIL	AFIS CRUZEIRO 125.70	GNDC NIL
-------------	------------	-------------------------	-------------

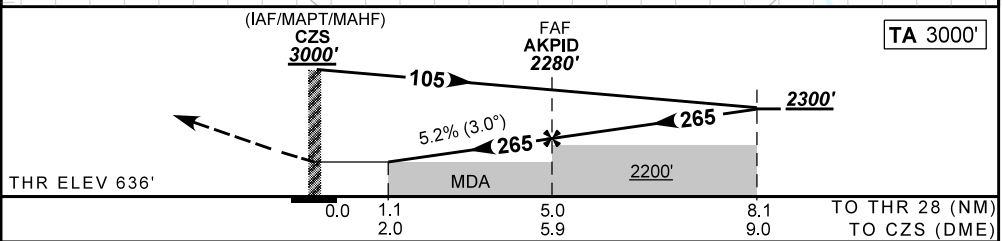
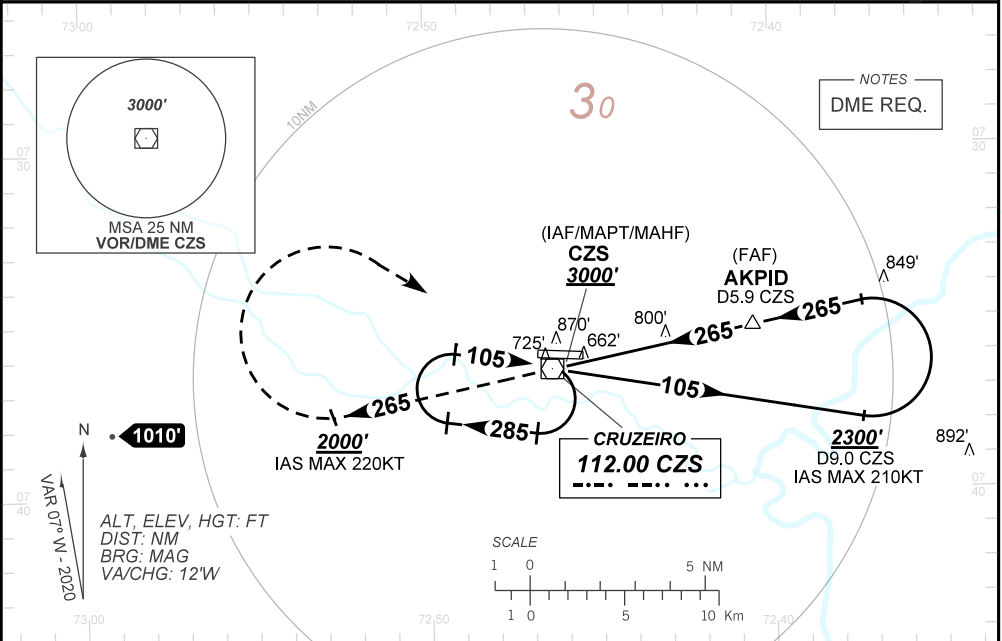
VOR CZS 112.00 MHz	FINAL CRS 265°	FAF: 2280'	N/A	VOR MDA / (OCH): 1050' / (410')
-----------------------	-------------------	---------------	-----	------------------------------------

APCH Perdida: 1) Subir para **3000'**. Manter o proa **265** até cruzar **2000'**. Após curvar à DIREITA, direto VOR CZS para espera. 2) IAS MAX 220KT.

Missed APCH: 1) Climb to **3000'**. Maintain heading **265** until passing **2000'**. After, turn RIGHT direct to CZS VOR for holding. 2) IAS MAX 220KT.

RMK: NIL.

DEPARTAMENTO DE CONTROLE DO ESPAÇO AÉREO



RWY28	1.1	2.0	3.0	4.0	AKPID		KT	090	110	130	150	170	190
ALT (HGT)	1050	1323	1641	1960	2280		FPM	500	600	700	800	900	1000
							FAF-MAPT	NA					

STRAIGHT-IN	CAT	A	B	C	D	E
	MDA / (OCH)	1050' / (410')				
VOR	ALS/NO ALS/ RVR ALS (m)	NIL / 1600 / NIL			NIL / 1900 / NIL	
CIRCLING	MDA / (OCH)	NA				
	ALS/NO ALS/ RVR ALS (m)					

CHANGES: ADEL DEC/VAR LAYOUT, MDA, PROC, TA.