

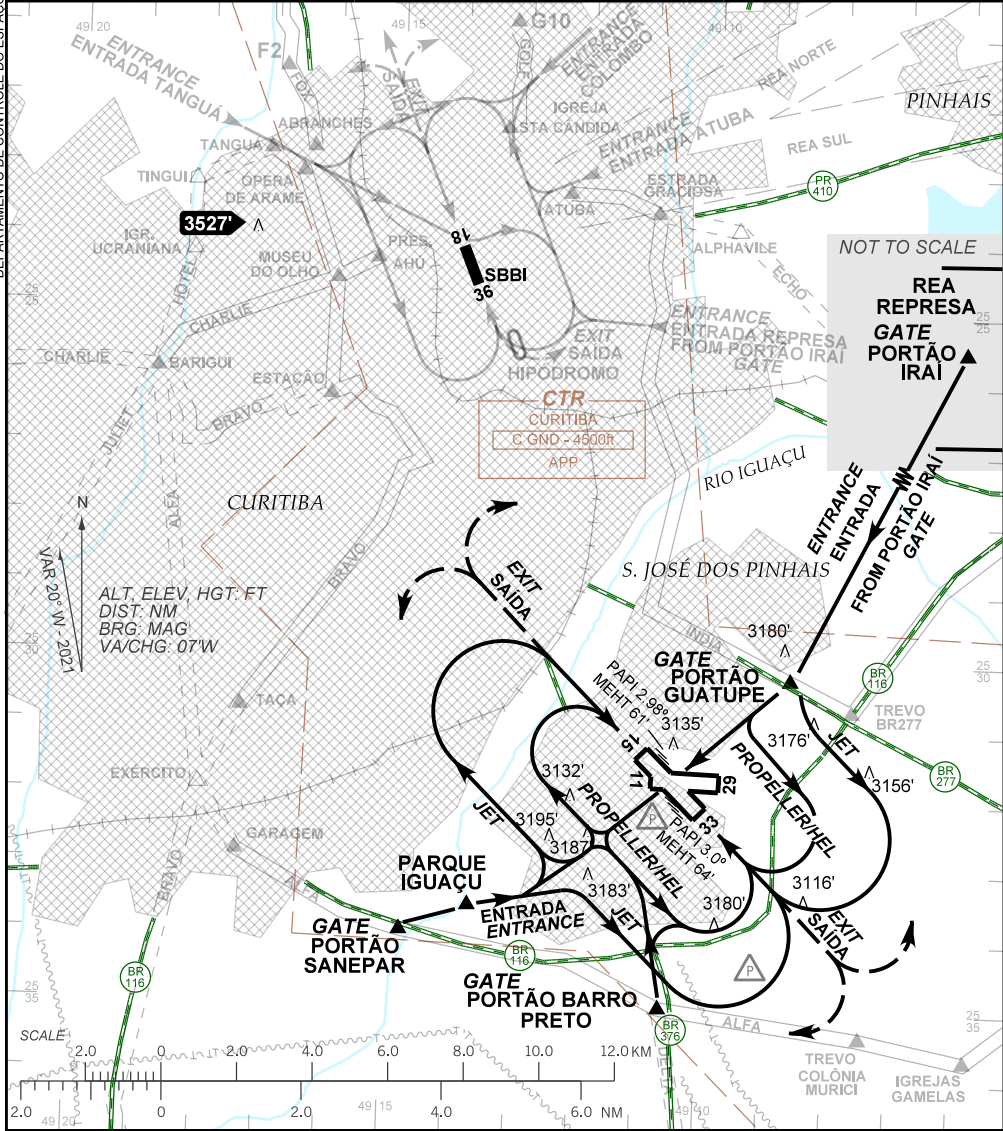
VISUAL APPROACH CHART
(VAC)

CURITIBA / Afonso Pena, INTL (SBCT)

AD ELEV: 2989'

RWY 15/33

D-ATIS 127.80	APP CURITIBA 119.70 119.95 120.65 120.95 129.55 133.15				TWR CURITIBA 118.15	GND C CURITIBA 121.90
------------------	---	--	--	--	------------------------	--------------------------



RMK:

- ALTITUDES MÍNIMAS NO CIRCUITO DE TRÁFEGO / MINIMUM ALTITUDES IN TRAFFIC CIRCUIT:
 - JATO / JET: 4500'
 - HÉLICE / PROPELLER: 4000'
 - HEL: 3600'
- INFORMAÇÕES COMPLEMENTARES NO VERSO.
SEE REVERSE SIDE FOR ADDITIONAL INFORMATION.

CHANGES: DEC. LAYOUT: PAPI.

— RMK —

3 - CKT RWY 11/29 PADRÃO E SUJEITO AUTH ATC.

STANDARD TRAFFIC PATTERN TO RWY 11/29 AND SUBJECT ATC CLEARANCE.

4 - PARA POUSO EM SBBI, VER VAC DESSE AERÓDROMO.

FOR LANDING AT SBBI, SEE VAC OF THIS AERODROME.