

**INSTRUMENT APPROACH
CHART (IAC)**

TEFÉ / Prefeito Orlando Marinho (SBTF)

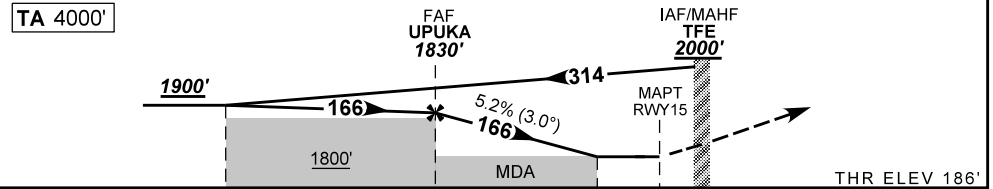
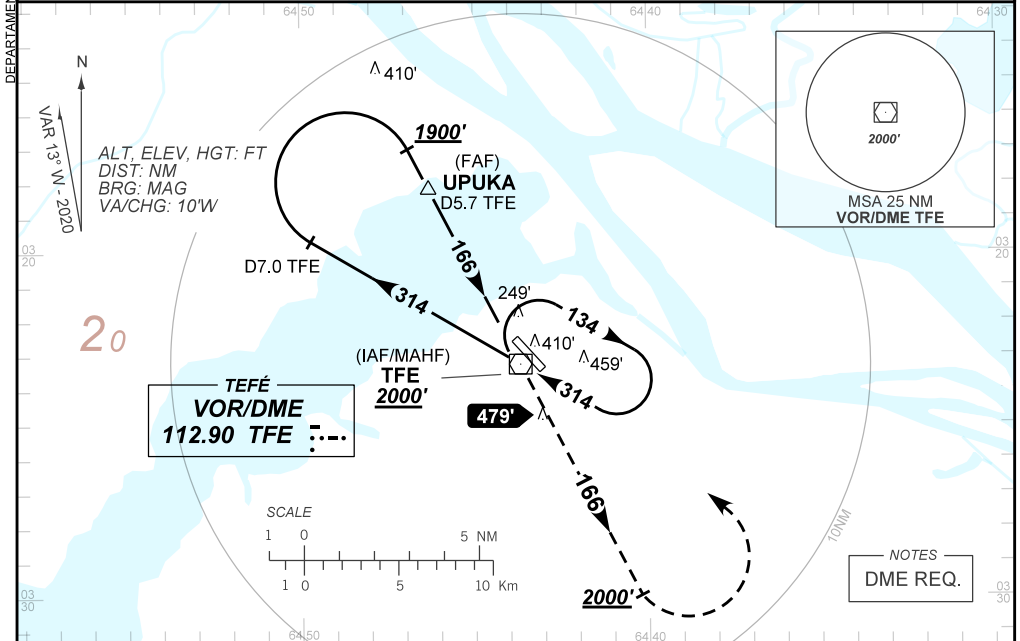
**VOR RWY 15
(CAT A,B,C)**

AD ELEV: 186'

ATIS NIL	APP NIL	AFIS TEFÉ 125.60	GNDC NIL
VOR TFE 112.90 MHz	FINAL CRS 166°	FAF: 1830'	N/A
VOR MDA / (OCH): 630' / (450')			

APCH Perdida: Subir para **2000'** na RDL **166** do VOR TFE. Após, curvar à ESQUERDA direto VOR TFE para espera.

Missed APCH: Climb to **2000'** on **166** RDL TFE VOR. After, turn LEFT direct TFE VOR for holding.



TO THR 15 (NM)	6.3	5.0	1.2	0.0
TO TFE (DME)	7.0	5.7	1.9	0.7

	UPUKA	4.0	3.0	2.0	1.2	RWY15	Ground Speed (KT)	090	110	130	150	170	190
	1830	1510	1191	873	630	ALT	FPM	500	600	700	800	NA	NA
	1644	1324	1005	687	450	(HGT)	FAF-MAPT	NA					

STRAIGHT-IN	CAT	A	B	C	D	E
VOR	MDA / (OCH)	630' / (450')			NA	
	ALS/NO ALS/ RVR ALS (m)	NIL / 1600 / NIL			NIL / 2100 / NIL	
CIRCLING	MDA / (OCH)	NA				

CHANGES: NIL