

**INSTRUMENT APPROACH  
CHART (IAC)**

**CANOAS / Campo Nossa Senhora de Fátima, MIL (SBCO)**

**AD ELEV: 26'**

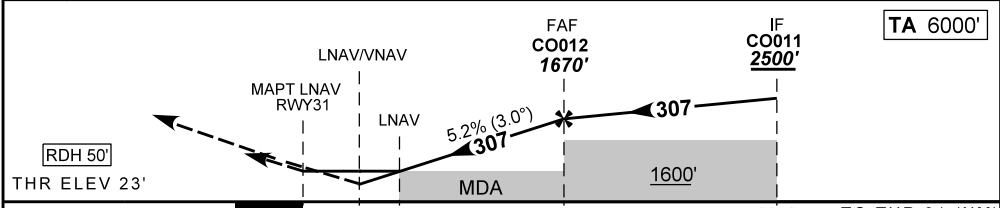
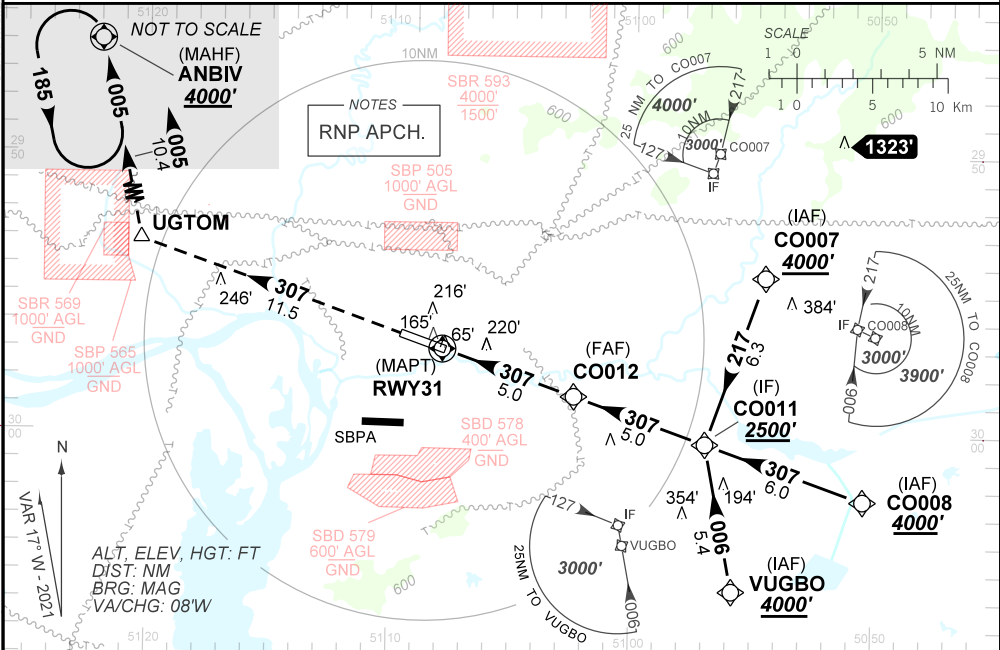
**RNP Y RWY 31**

ATIS NIL	APP PALEGRE 119.00 120.10 120.55 128.90	TWR CANOAS 118.50 122.80 (MIL)	GNDC CANOAS 121.70
TEMP LNAV/VNAV MIN -10°C / MAX 50°C	FINAL CRS 307°	FAF: 1670'	LNAV/VNAV DA / (OCH): 750' / (730')
LNAV		MDA / (OCH): 950' / (930')	

APCH Perdida: 1) Subir para **4000'** no rumo **307°** até UGTOM. Após, curvar a DIREITA rumo **005°** até ANBIV para espera.

Missed APCH: 1) Climb to **4000'** on course **307°** up to UGTOM. Then, turn RIGHT course **005°** up to ANBIV for holding.

DEPARTAMENTO DE CONTROLE DO ESPAÇO AÉREO



RWY31	2.8	3.0	4.0	CO012		Ground Speed (KT)	090	110	130	150	170	190
ALT	950	1031	1350	1670		FPM	500	600	700	800	900	1000
(HGT)	930	1008	1327	1647		FAF-MAPT	NA					

STRAIGHT-IN	CAT	A	B	C	D	E
LNAV/VNAV	DA / (OCH)	750' / (730')				NA
	ALS/NO ALS/ RVR ALS (m)	NIL / 3400 / NIL				
LNAV	MDA / (OCH)	950' / (930')				
	ALS/NO ALS/RVR ALS (m)	NIL / 3400 / NIL		NIL / 4300 / NIL		
CIRCLING	MDA / (OCH)	NA				
	VIS (m)					

CHANGES: ALT, EAC, IDENT, LAYOUT