

STANDARD DEPARTURE CHART
INSTRUMENT (SID)

BRASÍLIA / Pres. Juscelino Kubitschek, INTL (SBBR)

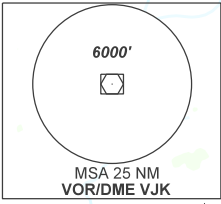
RWY 11R

MIBIS 1A

AD ELEV: 3498'

TA 7000'	D-ATIS 127.80	TWR BRASÍLIA 118.10 118.45 118.75	APP BRASÍLIA 120.65 120.30 120.00	ACC BRASÍLIA 124.50 135.00 124.70 133.05
----------	------------------	--------------------------------------	--------------------------------------	--

DEPARTAMENTO DE CONTROLE DO ESPAÇO AÉREO



KOGLI
D54.7 VJK

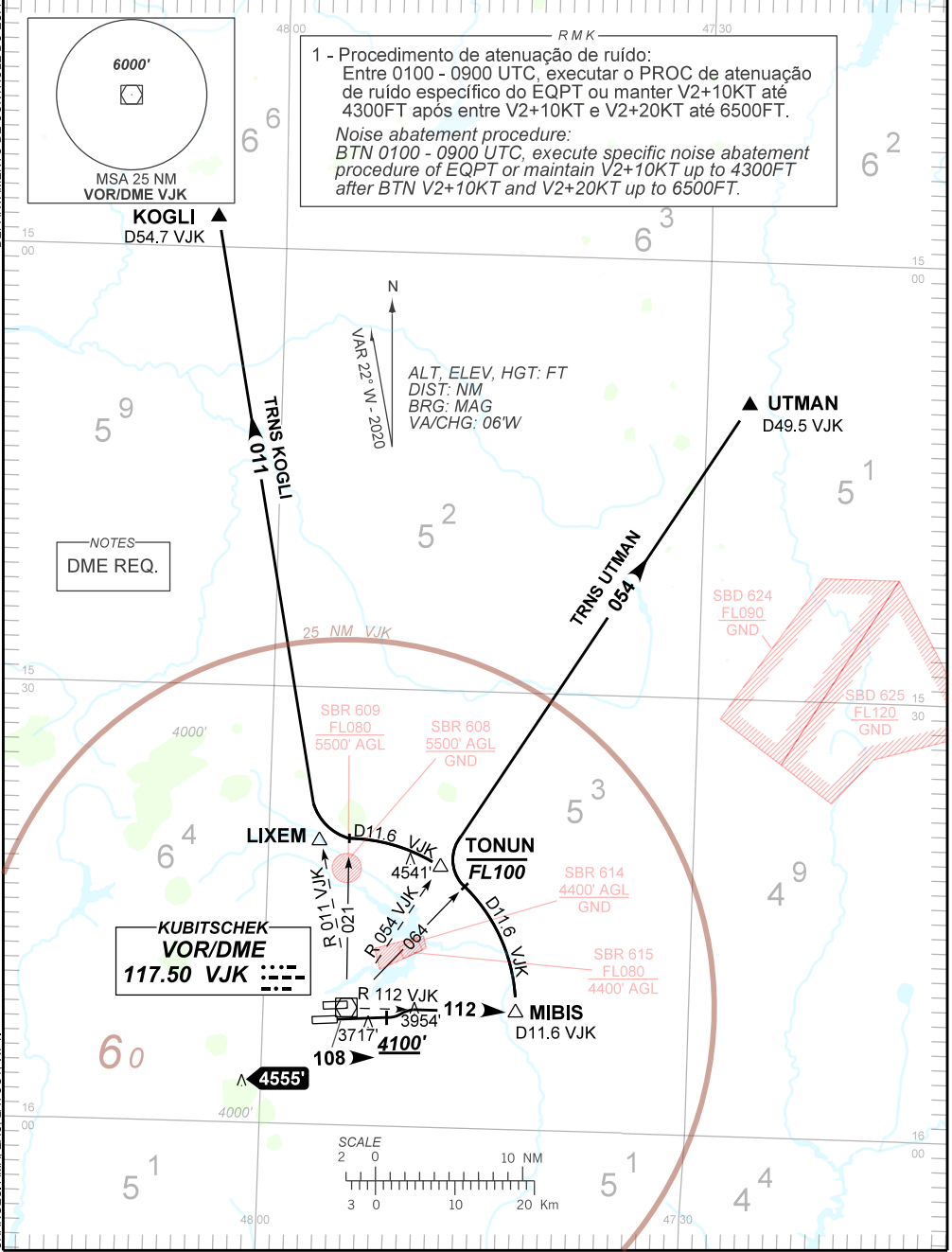
1 - Procedimento de atenuação de ruído:
Entre 0100 - 0900 UTC, executar o PROC de atenuação de ruído específico do EQPT ou manter V2+10KT até 4300FT após entre V2+10KT e V2+20KT até 6500FT.

Noise abatement procedure:
BTN 0100 - 0900 UTC, execute specific noise abatement procedure of EQPT or maintain V2+10KT up to 4300FT after BTN V2+10KT and V2+20KT up to 6500FT.

NOTES
DME REQ.

ALT, ELEV, HGT: FT
DIST: NM
BRG: MAG
VA/CHG: 06'W

VAR 22° N - 2020



CHANGES: AMA, EAC, LAYOUT, WPT.