

**INSTRUMENT APPROACH
CHART (IAC)
AD ELEV: 787'**

FOZ DO IGUAÇU / Cataratas, INTL (SBFI)

RNAV(GNSS) RWY 15

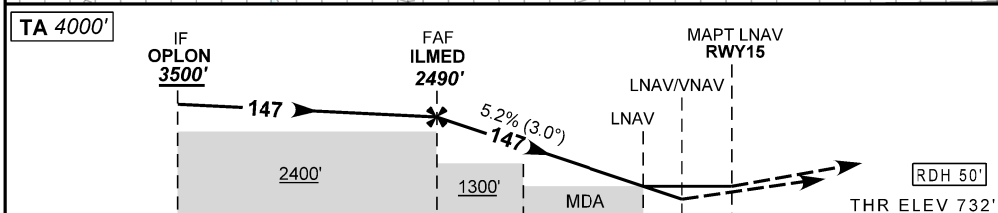
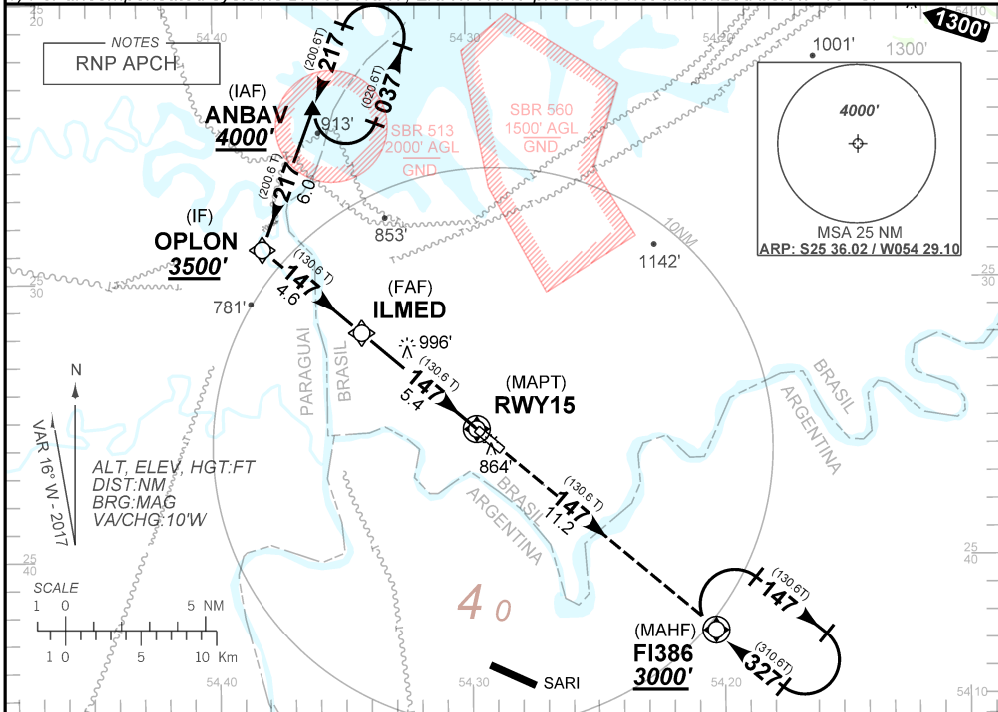
D-ATIS	APP FOZ 119.15 120.30		TWR FOZ 118.80	GNDC NIL
N/A	FINAL CRS 147°	FAF 2490'	LNAV/VNAV DA / (OCH): 1015' / (290')	LNAV MDA / (OCH): 1100' / (370')

APCH Perdida: Subir para **3000'** no rumo **147°** para espera em FI386.

Missed APCH: Climb to **3000'** on course **147°** for holding over FI386.

RMK: 1) Para sistemas BARO-VNAV não compensados, procedimento LNAV/VNAV não autorizado abaixo de -10° C.

1) For uncompensated systems BARO-VNAV, LNAV/VNAV procedure not authorized below -10° C.



TO THR 15 (NM) 10.0 5.4 2.5 1.0 0.7

FI007	5.0	4.0	3.0	2.0	1.0	RWY15	KT	90	110	130	150	170	190
2490	2374	2056	1737	1419	1100	ALT	FPM	500	600	700	800	900	NA
1758	1642	1324	1005	687	368	(HGT)	FAF-MAPT	NA					

STRAIGHT-IN	CAT	A	B	C	D	E
	DA / (OCH)	1015' / (290')				
LNAV/VNAV	ALS/NO ALS/RVR (m)	800 / 1400 / NIL				
	MDA / (OCH)	1100' / (370')				
LNAV	ALS/NO ALS/RVR (m)	800 / 1600 / NIL		1000 / 1700 / NIL		
	MDA / (OCH)	NA				
CIRCLING	MDA / (OCH)	NA				
	VIS (m)	NA				

AIRAC AMDT 2102A1 25 FEB 21

DEPARTAMENTO DE CONTROLE DO ESPAÇO AÉREO

SBFI IAC 000 1/1
IAC RNAV(GNSS) RWY 15

CHANGES: EAC, FREQ, RWY