

**INSTRUMENT APPROACH
CHART (IAC)**

CANOAS / Campo Nossa Senhora de Fátima, MIL (SBCO)

**USO EXCLUSIVO ACFT MILITARES
MILITARY ACFT ONLY**

PAR Y RWY 31

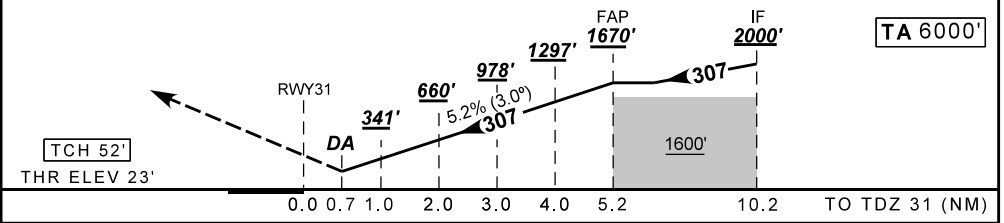
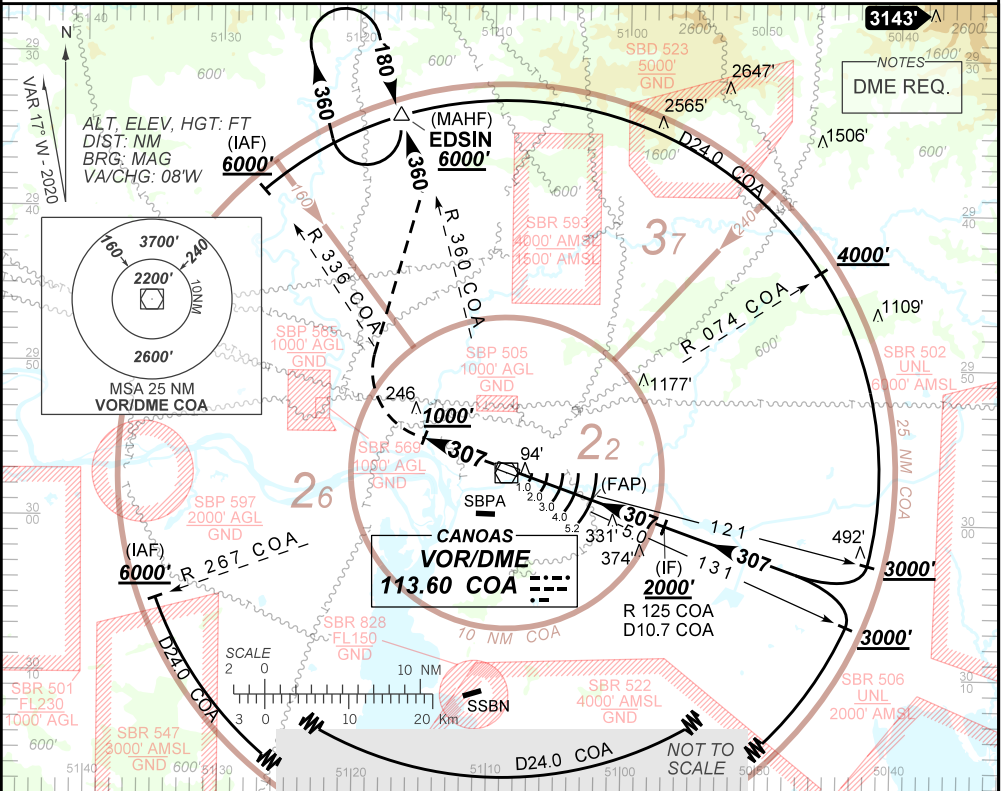
AD ELEV: 26'

ATIS NIL	APP PALEGRE 119.00 120.10 120.55 128.90	PAR CANOAS 129.15 134.80	TWR CANOAS 118.50 122.80 (MIL)	GND C CANOAS 121.70
N/A	FINAL CRS 307°	FAP: 1670'	PAR DA / (OCH): 289' / (266')	N/A

APCH Perdida: Subir para **6000'**. Manter proa **307** até **1000'**. Após, curvar à DIREITA para interceptar RDL **360** do VOR COA até EDSIN para espera.

Missed APCH: Climb to **6000'**. Maintain heading **307** until **1000'**. After, turn RIGHT to intercept **360** RDL COA VOR until EDSIN for holding.

DEPARTAMENTO DE CONTROLE DO ESPAÇO AÉREO



TDZ31	0.7	1.0	2.0	3.0	4.0	FAP	Ground Speed (KT)	090	110	130	150	170	190
ALT	289	341	660	978	1297	1670	FPM	500	600	700	800	900	1000
(HGT)	266	318	637	955	1274	1647	FAP-MAPT	NA					

STRAIGHT-IN	CAT	A	B	C	D	E
PAR	DA / (OCH)	289' / (266')				
	ALS/NO ALS/ RVR ALS (m)	NIL / 1300 / NIL				

CHANGES: EAC.

AIRAC AMDT 2505A1 15 MAY 25

USO EXCLUSIVO ACFT MILITARES / MILITARY ACFT ONLY

**SBCO_IAC_01U/11
IAC PAR Y RWY 31**