

INSTRUMENT APPROACH
CHART (IAC)

CURITIBA / Afonso Pena, INTL (SBCT)

VOR Z RWY 15

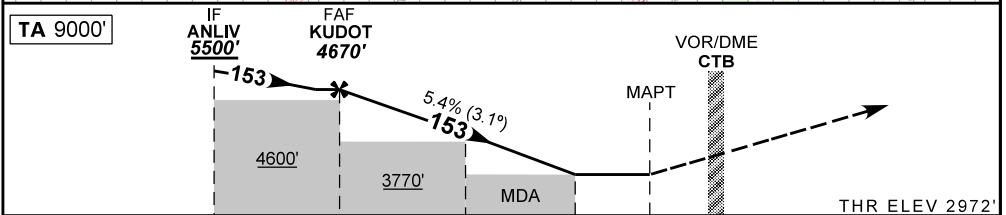
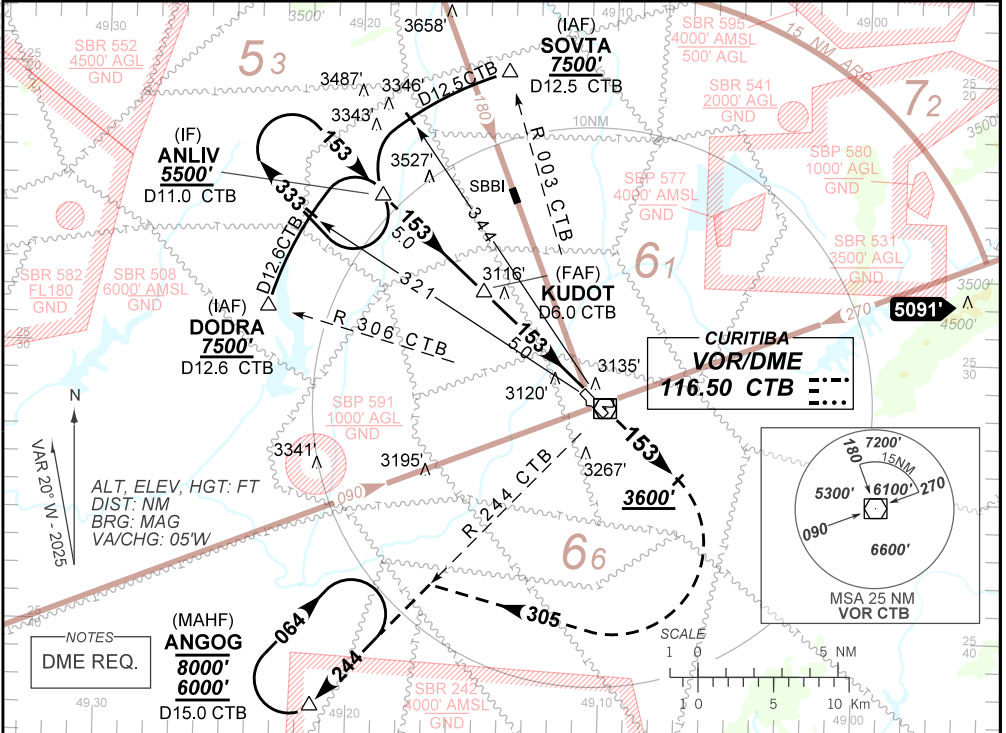
AD ELEV: 2989'

D-ATIS 127.80	APP CURITIBA 119.70 119.95 120.65 120.95 129.55 133.15	TWR CURITIBA 118.15	GNDC CURITIBA 121.90
VOR/DME CTB 116.50 MHZ	FINAL CRS 153°	FAF: 4670'	N/A
VOR			MDA / (OCH): 3390' / (420')

APCH perdida: Subir para **6000'**. Manter rumo **153** até **3600'**. Após, curvar à DIREITA proa **305** para interceptar RDL **244** VOR CTB até ANGOG para espera.

Missed APCH: Climb to **6000'**. Maintain course **153** until **3600'**. After, turn **RIGHT** heading **305** to intercept **244** RDL CTB VOR until ANGOG for holding.

DEPARTAMENTO DE CONTROLE DO ESPAÇO AÉREO



TO THR 15 (NM)	10.0	5.0	2.3	1.1	0.0
TO CTB (DME)	11.0	6.0	3.3	2.1	1.0

	KUDOT	4.0	3.0	2.3	1.1	RWY15	Ground Speed (KT)	090	110	130	150	170	190
	4670	4338	4009	3779	3390	ALT	FPM	500	600	700	800	900	NA
	1698	1366	1037	807	420	(HGT)	FAF-MAPT 5NM	NA					

STRAIGHT-IN	CAT	A	B	C	D	E
	MDA / (OCH)	3390' / (420')				
VOR	ALS / NO ALS / RVR ALS (m)	800 / 1600 / 700			1200 / 1900 / 1100	
	MDA / (OCH)	NA				
CIRCLING	MDA / (OCH)	NA				
	VIS (m)	NA				

AIRAC AMDT 2606A1 11 JUN 26

SBCT_IAC_01A 1/1
IAC VOR Z RWY 15

CHANGES: EAC