

INSTRUMENT APPROACH
CHART (IAC)

ALTA FLORESTA / Aeroporto Piloto Osvaldo Marques Dias (SBAT)

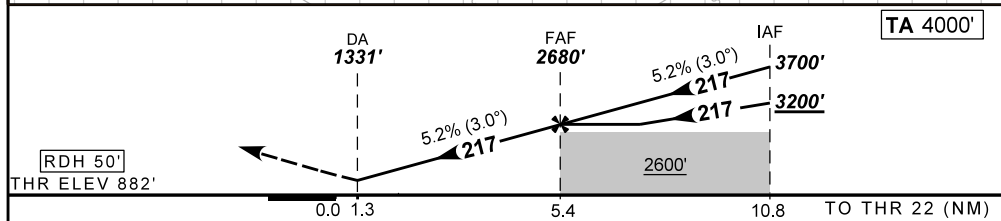
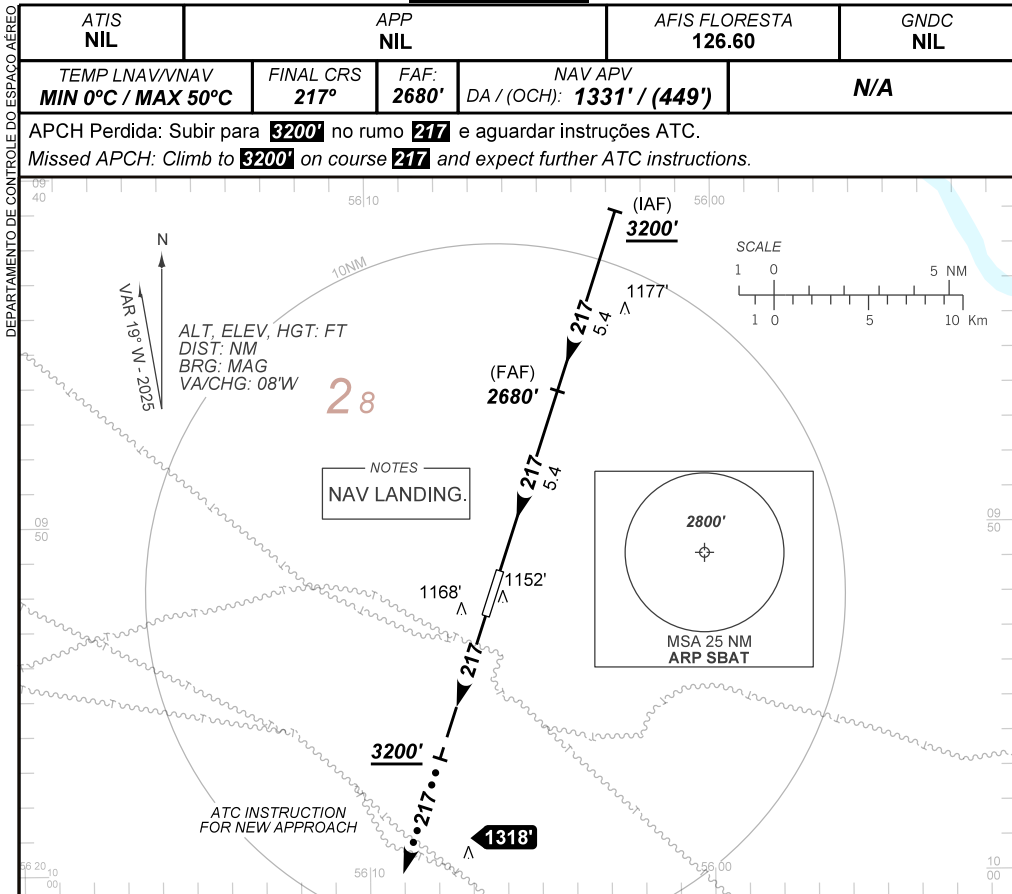
AD ELEV: 948'

USO EXCLUSIVO F-39
F-39 USE ONLY

NAV APV RWY 22

ATIS NIL	APP NIL	AFIS FLORESTA 126.60	GNDC NIL
TEMP LNAV/VNAV MIN 0°C / MAX 50°C	FINAL CRS 217°	FAF: 2680'	NAV APV DA / (OCH): 1331' / (449')
			N/A

APCH Perdida: Subir para **3200'** no rumo **217** e aguardar instruções ATC.
Missed APCH: Climb to **3200'** on course **217** and expect further ATC instructions.



RWY22	2.0	3.0	4.0	FAF					
ALT	1569	1887	2206	2680					
(HGT)	687	1005	1324	1798					

Ground Speed (KT)	090	110	130	150	170	190
FPM	500	600	700	800	900	1000
FAF-MAPT	NIL					

STRAIGHT-IN	CAT	ONLY CAT E
	NAV APV	1331' / (449')
	ALS/NO ALS/ RVR ALS (m)	NIL / 2100 / NIL
		NA
CIRCLING	MDA / (OCH)	NA
	VIS (m)	

CHANGES: NEW CHART.