

**INSTRUMENT APPROACH  
CHART (IAC)**

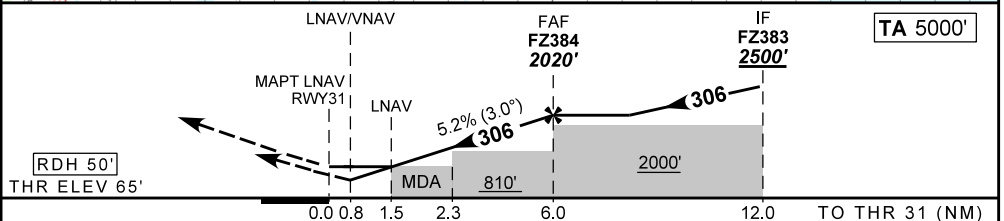
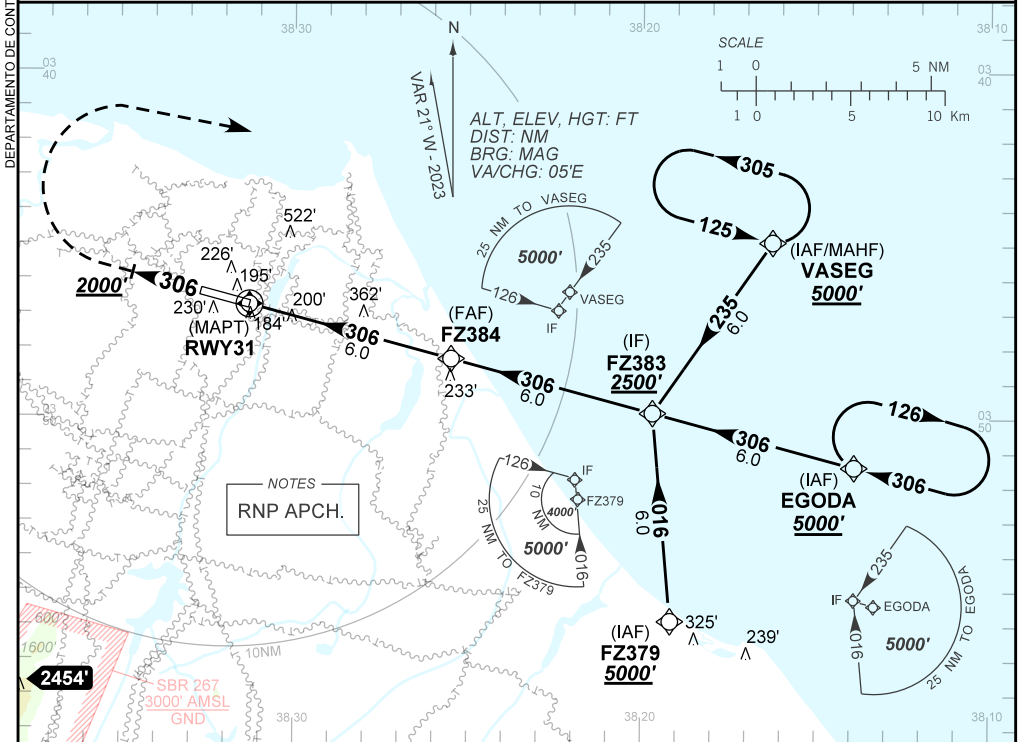
**FORTALEZA / Pinto Martins, INTL (SBFZ)**

**AD ELEV: 83'**

**RNP RWY 31**

D-ATIS <b>127.70</b>	APP FORTALEZA <b>120.50 133.00 134.55</b>	TWR FORTALEZA <b>129.00</b>	GNDC FORTALEZA <b>121.95</b>
TEMP LNAV/VNAV <b>MIN 10°C / MAX 50°C</b>	FINAL CRS <b>306°</b>	FAF: <b>2020'</b>	LNAV/VNAV DA / (OCH): <b>375' / (310')</b>
		LNAV MDA / (OCH): <b>600' / (540')</b>	

APCH Perdida: Subir para **5000'**. Manter rumo **306** até **2000'**. Após, curvar à DIREITA direto VASEG para espera.  
Missed APCH: Climb to **5000'**. Maintain course **306** until **2000'**. After, turn RIGHT direct VASEG for holding.



RWY31	1.5	2.3	3.0	4.0	5.0	FZ384	Ground Speed (KT)	090	110	130	150	170	190
ALT	600	819	1070	1389	1707	2020	FPM	500	600	700	800	900	1000
(HGT)	540	754	1005	1324	1642	1955	FAF-MAPT	NIL					

STRAIGHT-IN	CAT	A	B	C	D	E
	DA / (OCH)	375' / (310')				NA
LNAV/VNAV	ALS / NO ALS / RVR (m)	NIL / 1400 / NIL				NA
	MDA / (OCH)	600' / (540')				
LNAV	ALS / NO ALS / RVR (m)	NIL / 1600 / NIL		NIL / 2400 / NIL		
	MDA / (OCH)	NA				
CIRCLING	MDA / (OCH)	NA				
	VIS (m)	NA				

CHANGES: LAYOUT, PROC.