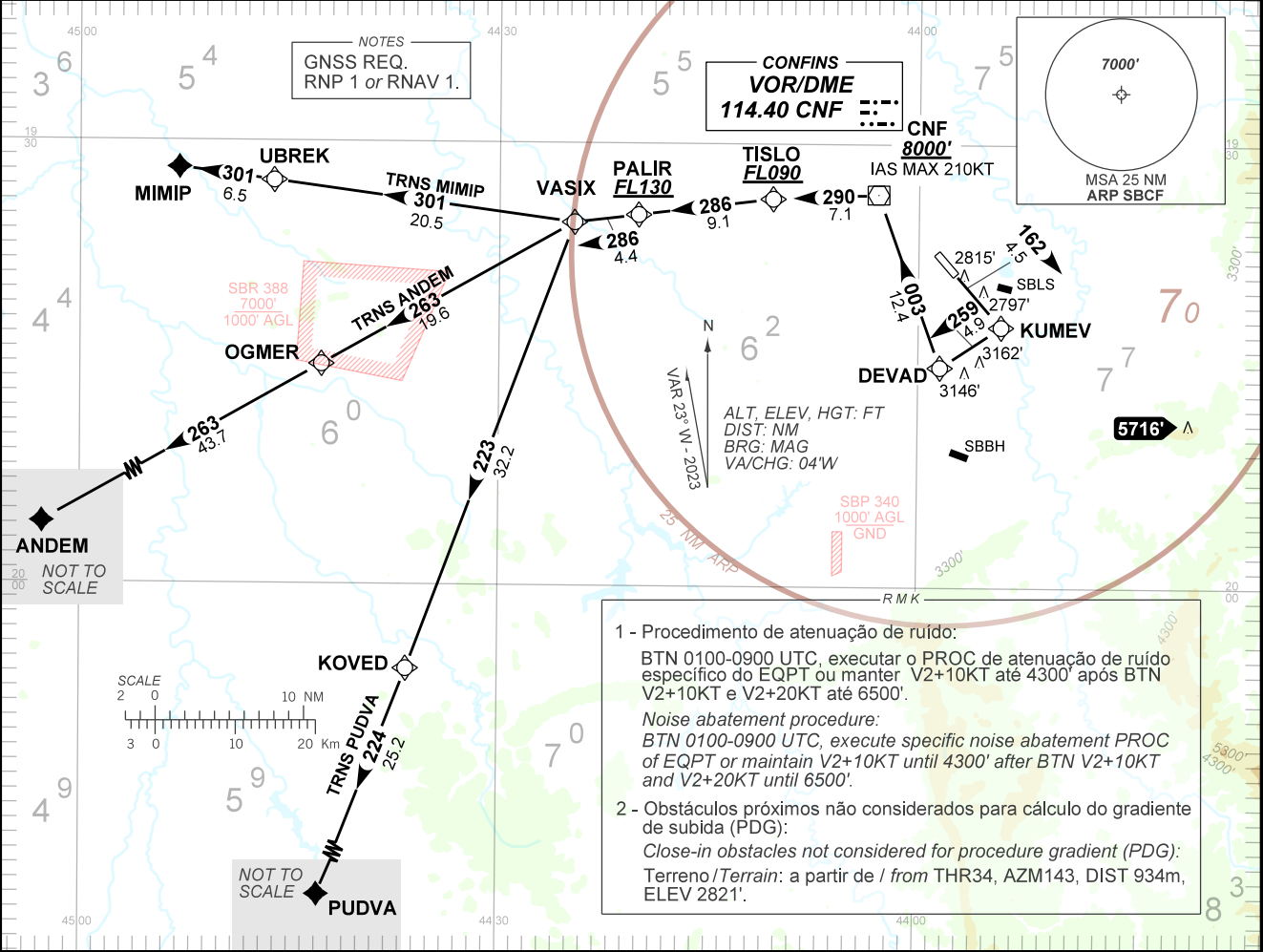


AD ELEV: 2721'

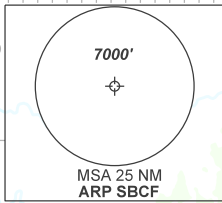
RNAV VASIX 1A

TA 8000'	D-ATIS 127.85	TWR CONFINES 118.20	APP BELO HORIZONTE 119.10 119.30 119.65 120.20 128.55 129.10 129.40	RNAV VASIX 1A ACC BRASILIA 123.00 127.00 124.80 135.55
----------	---------------	---------------------	---	---



NOTES
GNSS REQ.
RNP 1 or RNAV 1.

CONFINES
VOR/DME
114.40 CNF



1 - Procedimento de atenuação de ruído:
BTN 0100-0900 UTC, executar o PROC de atenuação de ruído específico do EQPT ou manter V2+10KT até 4300' após BTN V2+10KT e V2+20KT até 6500'.

Noise abatement procedure:
BTN 0100-0900 UTC, execute specific noise abatement PROC of EQPT or maintain V2+10KT until 4300' after BTN V2+10KT and V2+20KT until 6500'.

2 - Obstáculos próximos não considerados para cálculo do gradiente de subida (PDG):
Close-in obstacles not considered for procedure gradient (PDG):
Terreno/Terrain: a partir de / from THR34, AZM143, DIST 934m, ELEV 2821'.