

**INSTRUMENT APPROACH
CHART (IAC)**

AD ELEV: 2051'

CAMPO GRANDE / Estância Santa Maria (SSKG)

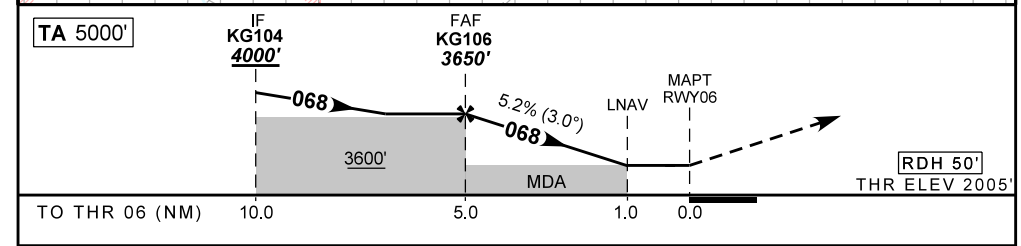
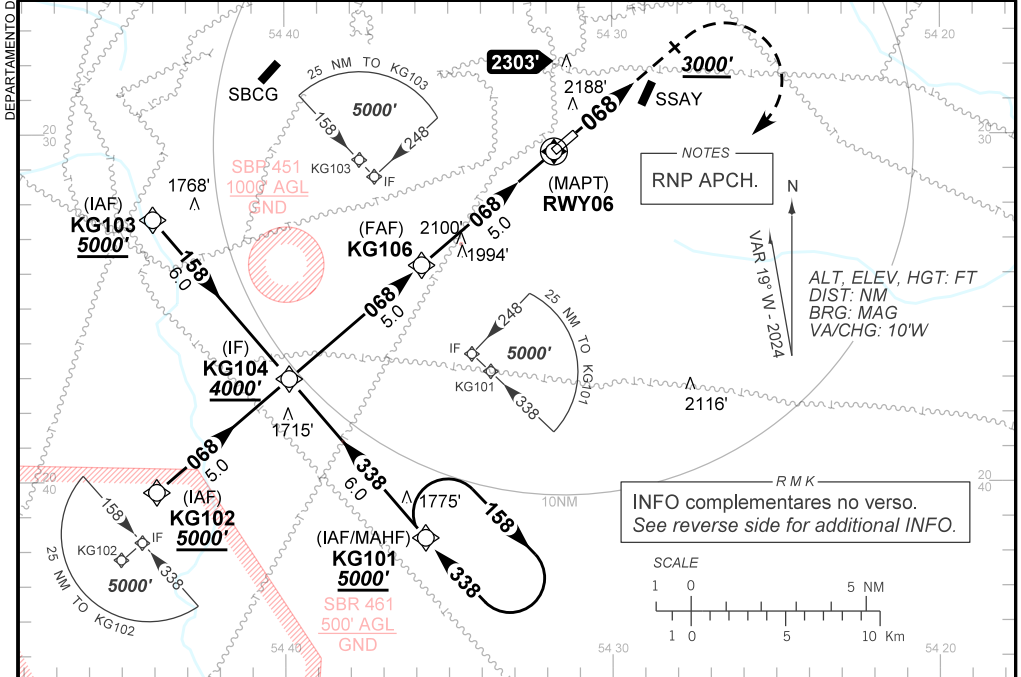
**USO EXCLUSIVO ACFT MILITARES
MILITARY ACFT ONLY**

RNP RWY 06

(CAT A, B, C)

D-ATIS 127.60	APP CAMPO GRANDE 119.35 119.65 120.20 121.00			TWR CAMPO GRANDE 118.10	GNDC NIL
NA	FINAL CRS 068°	FAF: 3650'	NA	LNAV MDA / (OCH): 2370' / (370')	

APCH Perdida: Subir para **5000'**. Manter proa **068** até **3000'**. Após curvar à DIREITA direto KG101 para espera.
 Missed APCH: Climb to **5000'**. Maintain heading **068** until **3000'**. After, turn RIGHT direct KG101 for holding.
 RMK: Realização do procedimento condicionada às regras específicas definidas pelo COMAER.
 Procedure according to specific rules defined by COMAER.



	KG106	4.0	3.0	2.0	1.0	RWY06	Ground Speed (KT)	090	110	130	150	170	190
		3650	3329	3010	2692	2370	FPM	500	600	700	800	900	NA
		1645	1324	1005	687	370	FAF-MAPT	NIL					

STRAIGHT-IN	CAT	A	B	C	D	E
	DA / (OCH)	NA				
LNAV/VNAV	ALS/NO ALS/ RVR ALS (m)	NA				
	MDA / (OCH)	2370' / (370')				
LNAV RASS (SBCG)	ALS/NO ALS/ RVR ALS (m)	NIL / 1700 / NIL				
	MDA / (OCH)	NA				
CIRCLING	MDA / (OCH)	NA				
	VIS (m)	NA				

AIRAC AMDT 2411A1 31 OCT 24

USO EXCLUSIVO ACFT MILITARES / MILITARY ACFT ONLY

SBKG_IAC_00B 1/2

IAC RNP RWY 06

CHANGES: NEW CHART.

DEPARTAMENTO DE CONTROLE DO ESPAÇO AÉREO

USO EXCLUSIVO ACFT MILITARES
MILITARY ACFT ONLY

DEPARTAMENTO DE CONTROLE DO ESPAÇO AÉREO

— R M K —

2 - Utilizar o altímetro de SBCG
Use altimeter setting from SBCG.

3 - Dados complementares:
Complementary data:

IDENT	LATITUDE/LONGITUDE
KG101	S 20:41.62 / W 54:35.71
KG102	S 20:40.30 / W 54:43.92
KG103	S 20:32.46 / W 54:44.02
KG104	S 20:37.04 / W 54:39.87
KG106	S 20:33.78 / W 54:35.82
RWY06	S 20:30.52 / W 54:31.77

CHANGES: NEW CHART.