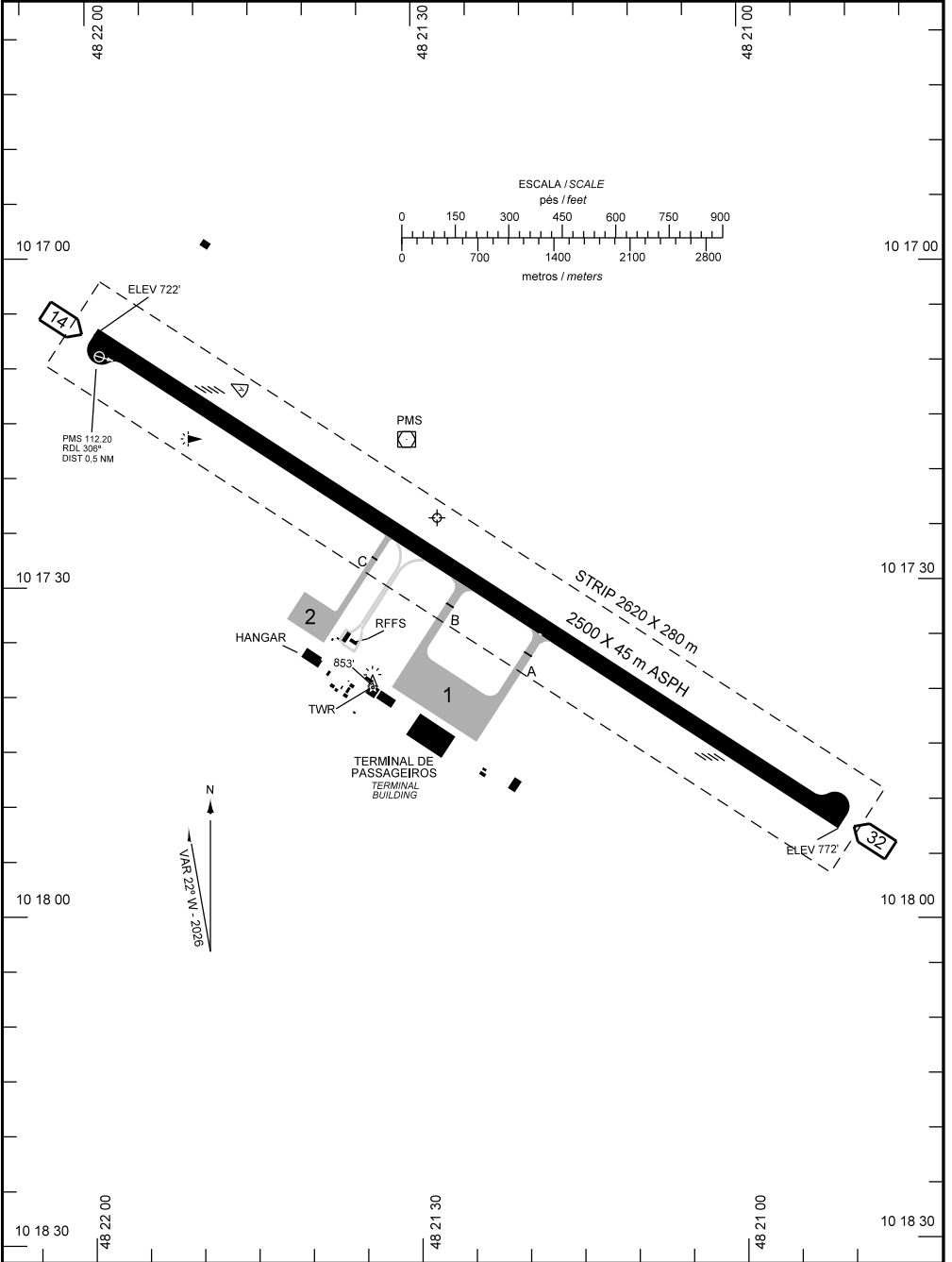


AD ELEV: 774'

ARP S10 17 24 W048 21 28

ATIS NIL	CLRD NIL	GNDC NIL	TWR / AFIS 118.00 121.50 / 119.00	APRON NIL
-------------	-------------	-------------	--------------------------------------	--------------



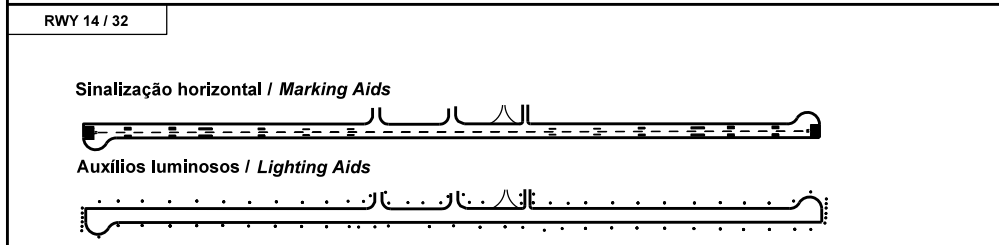
CHANGES: RVR:

**ADC - SBPJ: INFORMAÇÕES COMPLEMENTARES / COMPLEMENTARY INFORMATION**

CARACTERÍSTICAS FÍSICAS / PHYSICAL CHARACTERISTICS											
PISTA RUNWAY				DIMENSÕES(m) DIMENSIONS(m)				PCN	TIPO DE SUPERFÍCIE SURFACE KIND		
RWY	BRG MAG	Tipo Type	RCD	RWY	SWY	CWY	STRIP	RWY	RWY	SWY	
a	b	c	d	e	f	g	h	i	j	k	
14	145	NPA	4C	2500x45			2620 x 280	63/F/A/X/T	ASPH		
32	325	NPA	4C								

DISTÂNCIAS DECLARADAS, AUXÍLIOS VISUAIS E COORDENADAS DAS CABECEIRAS DECLARED DISTANCES, VISUAL AIDS AND THRESHOLD COORDINATES							
RWY	TORA(m)	TODA(m)	ASDA(m)	LDA(m)	AUXÍLIOS / AIDS	ALTURA GEODAL(m) GEOD HEIGHT(m)	COORDENADAS COORDINATES
14	2470	2500	2470	2470	PAPI(2.97°)	-17,70	S10 17 07 W048 21 59
32	2470	2500	2470	2470	PAPI	-17,64	S10 17 52 W048 20 51

**SERVIÇO DE SALVAMENTO E CONTRAINCÊNDIO / RESCUE AND FIRE FIGHTING SERVICE: RFFS REQ - 7**



**RMK:** 1) MEHT: PAPI - RWY 14 - 54FT  
RWY 32 - 72FT

CHANGES:RVR.