

**INSTRUMENT APPROACH
CHART (IAC)**

FORTALEZA / Pinto Martins, INTL (SBFZ)

AD ELEV: 83'

VOR Z RWY 31

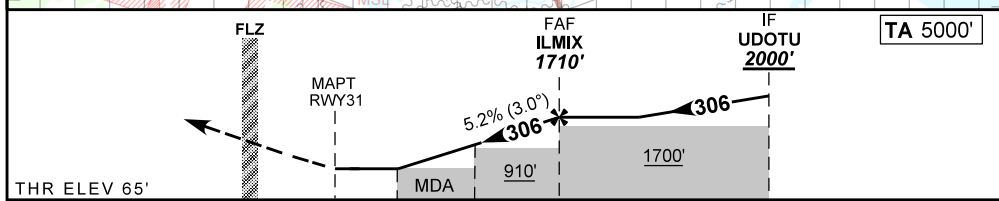
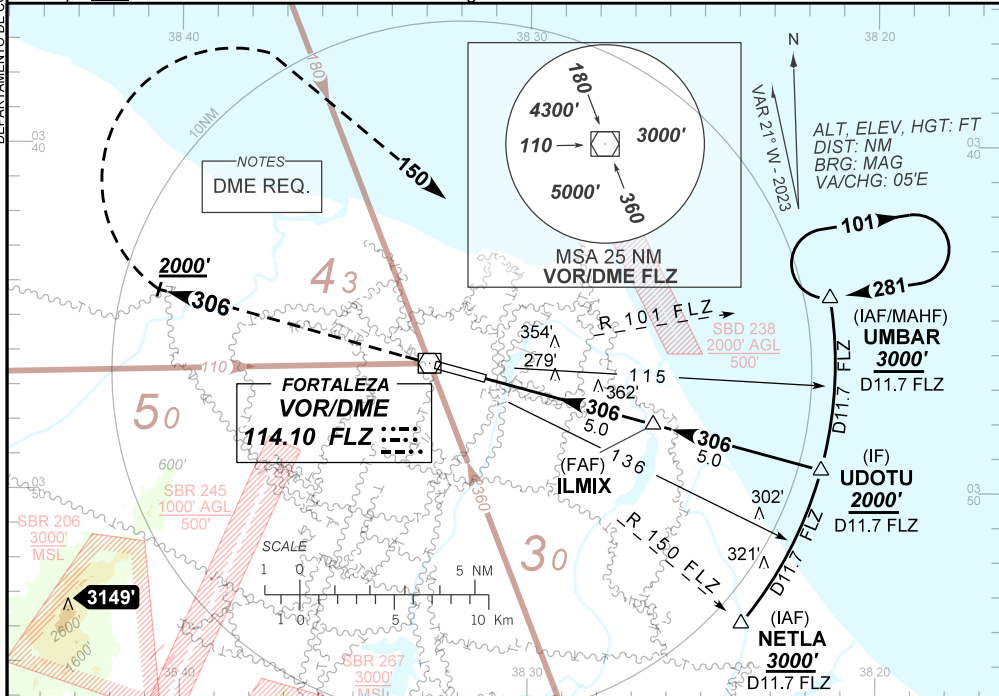
D-ATIS 127.70	APP FORTALEZA 120.50 133.00 134.55	TWR FORTALEZA 129.00	GNDC FORTALEZA 121.95
-------------------------	----------------------------------------------	--------------------------------	---------------------------------

VOR FLZ 114.10 MHz	FINAL CRS 306°	FAF: 1710'	N/A	VOR MDA / (OCH): 600' / (540')
------------------------------	--------------------------	----------------------	-----	------------------------------------------

APCH Perdida: Subir para **3000'**. Manter RDL **306** do VOR FLZ até **2000'**. Após, curvar à DIREITA proa **150** para interceptar RDL **101** do VOR FLZ até UMBAR para espera.

Missed APCH: Climb to **3000'**. Maintain **306** RDL FLZ VOR until **2000'**. After, turn RIGHT heading **150** to intercept **101** RDL FLZ VOR until UMBAR for holding.

DEPARTAMENTO DE CONTROLE DO ESPAÇO AEREO



0.0	1.5	2.5	5.0	10.0	TO THR 31 (NM)
1.7	3.2	4.2	6.7	11.7	TO FLZ (DME)

RWY31	1.5	2.0	2.5	3.0	4.0	ILMIX	Ground Speed (KT)	090	110	130	150	170	190
ALT	600	752	911	1070	1389	1710	FPM	500	600	700	800	900	NA
(HGT)	540		846	1005	1324	1645	FAF-MAPT	NA					

STRAIGHT-IN	CAT	A	B	C	D	E
VOR	MDA / (OCH)	600' / (540')				NA
	ALS / NO ALS / RVR (m)	NIL / 1600 / NIL		NIL / 2400 / NIL		
CIRCLING	MDA / (OCH)	NA				
	VIS (m)	NA				

CHANGES: NEW CHART.