

**INSTRUMENT APPROACH
CHART (IAC)**

JUNDIAÍ / Comandante Rolim Adolfo Amaro (SBJD)

RNP Z RWY 18

(CAT A, B, C)

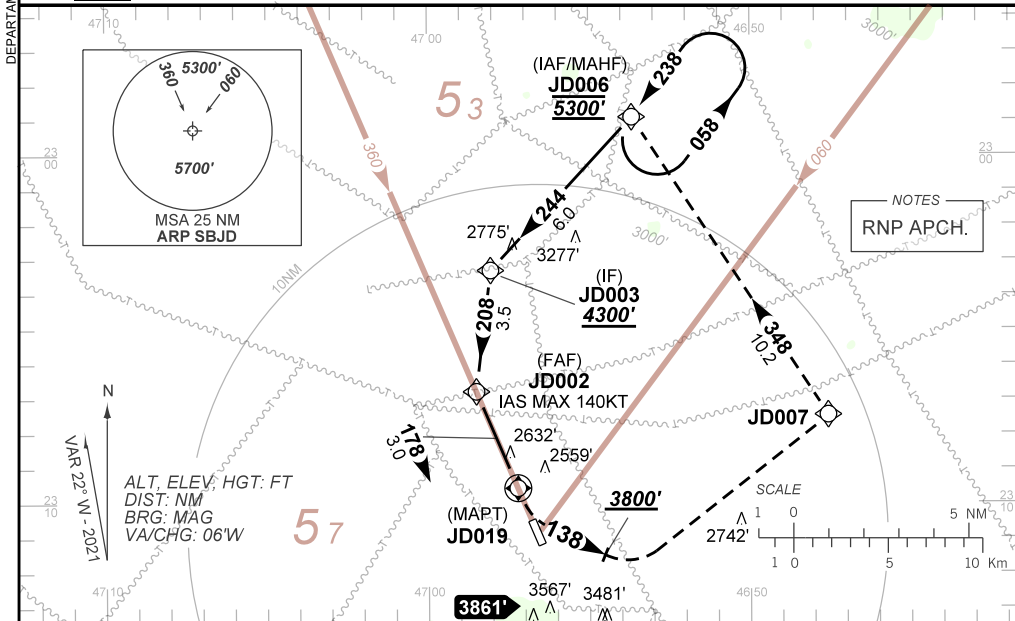
AD ELEV: 2470'

ATIS NIL	APP SÃO PAULO 119.05 119.25 119.80 120.05 120.45 120.85 122.75 123.25 124.15	AFIS JUNDIAÍ 118.75	TWR JUNDIAÍ 118.75	GNDZ JUNDIAÍ 121.65
-------------	--	------------------------	-----------------------	------------------------

N/A	FINAL CRS 178°	FAF: 3770'	N/A	LNAV MDA / (OCH): REFER TO MNM
-----	-------------------	---------------	-----	--

APCH Perdida: 1) Subir para **5300'**, gradiente (*VER MNM). Manter o rumo **138** até **3800'**. Após, curvar à ESQUERDA direto JD007. Após, curvar à ESQUERDA, rumo **348** até JD006 para espera. 2) IAS MAX 150KT até **3800'**.

Missed APCH: 1) Climb to **5300'**, gradient (*REFER TO MNM). Maintain course **138** until **3800'**. After, turn LEFT direct to JD007. After, turn LEFT course **348** until JD006 for holding. 2) IAS MAX 150KT until **3800'**.



TA 8000'	IF JD003 4300'	FAF JD002 3770'	LNAV	MAPT JD019	RWY18
	208	178	5.2% (3.0°)		
	3700'	MDA			
					RDH 50'
					THR ELEV 2429'
TO THR 18 (NM)	7.5	4.0	1.0	0.0	
TO MAPT (NM)	6.5	3.0	0.0		

	JD002	2.5	1.5	RWY18	Ground Speed (KT)	090	110	130	150	170	190
	3770	3290	2960	ALT	FPM	500	600	700	800	NA	
	1341	860	530	(HGT)	FAF-MAPT	NIL					

STRAIGHT-IN	CAT	A	B	C	D	E
	LNAV	MDA / (OCH)	2960' / (530')			NA
Missed APCH Climb gradient 5.0%	ALS/NO ALS/ RVR ALS (m)	NIL / 1600 / NIL			NIL / 2400 / NIL	
	LNAV	MDA / (OCH)	3290' / (860')			
CIRCLING	ALS/NO ALS/ RVR ALS (m)	NIL / 1600 / NIL	NIL / 2000 / NIL	NIL / 4000 / NIL	NA	
	MDA / (OCH)	NA				
	VIS (m)	NA				

CHANGES: AFIS, FREQ, LAYOUT, VIS.