

**INSTRUMENT APPROACH
CHART (IAC)**

JAGUARUNA / Regional Sul (SBJA)

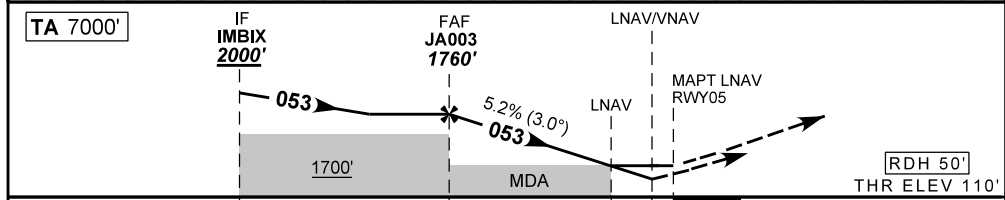
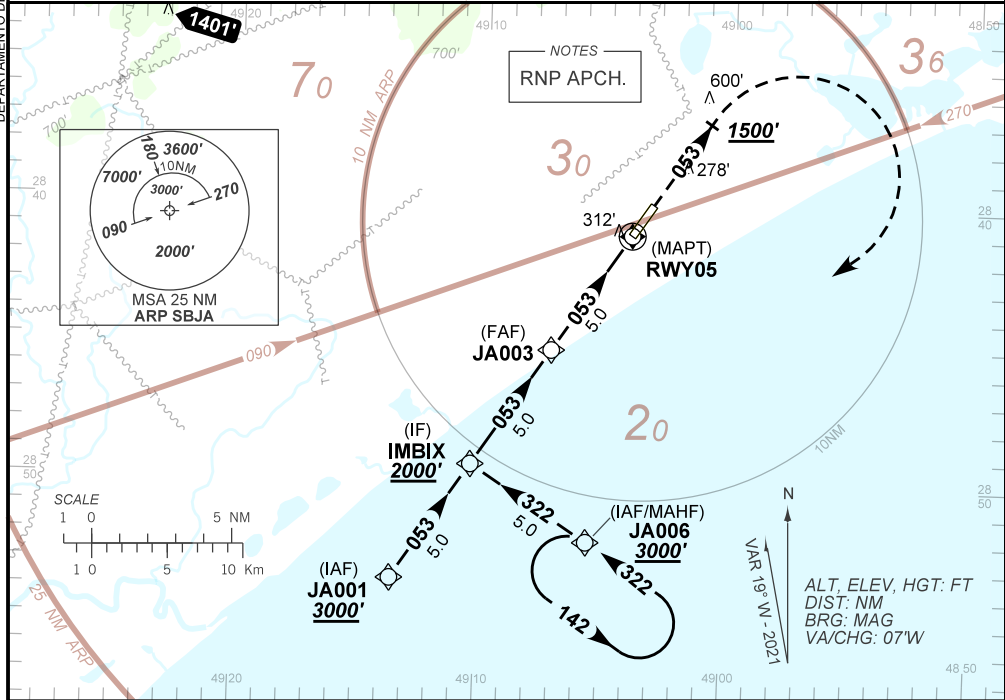
AD ELEV: 115'

RNP RWY 05

DEPARTAMENTO DE CONTROLE DO ESPAÇO AÉREO

| | | | |
|--|---------------------------------|-----------------------------------|--|
| ATIS NIL | AFIS JAGUARUNA 130.70 | TWR NIL | GNDC NIL |
| TEMP LNAV/VNAV MIN -10°C / MAX 50°C | FINAL CRS 053° | FAF: 1760' | LNAV/VNAV DA / (OCH): REFER TO MNM |
| APCH Perdida: Subir para 3000' . Manter rumo 053 até 1500' . Após, curvar a DIREITA para espera em JA006. | | MDA / (OCH): 560' / (450') | |
| Missed APCH: Climb to 3000' . Maintain course 053 until 1500' . After, turn RIGHT to JA006 for holding. | | | |

RMK: IAS MAX 230KT entre JA006 e IMBIX.
IAS MAX 230KT BTN JA006 and IMBIX.



| | | | | | | | | | | | | | |
|----------------|-------|------|------|-----|-----|-------|-------------------|-----|-----|-----|-----|-----|-----|
| TO THR 05 (NM) | 10.0 | 5.0 | 1.3 | 0.9 | 0.0 | | | | | | | | |
| | JA003 | 4.0 | 3.0 | 2.0 | 1.3 | RWY05 | Ground Speed (KT) | 090 | 110 | 130 | 150 | 170 | 190 |
| | 1760 | 1434 | 1115 | 797 | 560 | ALT | FPM | 500 | 600 | 700 | 800 | 900 | NA |
| | 1650 | 1324 | 1005 | 687 | 450 | (HGT) | FAF-MAPT | NA | | | | | |

| | | | | | | |
|-------------|-------------------------|------------------|----|------------------|---|---|
| STRAIGHT-IN | CAT | A | B | C | D | E |
| | DA / (OCH) | 454' / (350') | | 473' / (370') | | |
| LNAV/VNAV | ALS/NO ALS/ RVR ALS (m) | NIL / 1600 / NIL | | NIL / 1700 / NIL | | |
| | MDA / (OCH) | 560' / (450') | | | | |
| LNAV | ALS/NO ALS/ RVR ALS (m) | NIL / 1600 / NIL | | NIL / 2100 / NIL | | |
| | CIRCLING | MDA / (OCH) | NA | | | |
| VIS (m) | | NA | | | | |