

**INSTRUMENT APPROACH
CHART (IAC)**

PARACATU / Pedro Rabelo de Souza (SNZR)

RNP RWY 11

(CAT A, B)

AD ELEV: 2398'

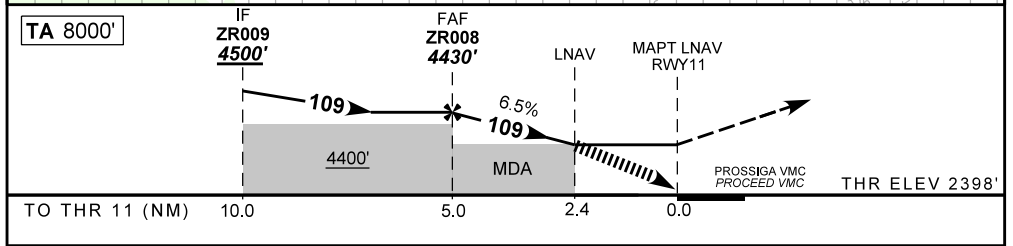
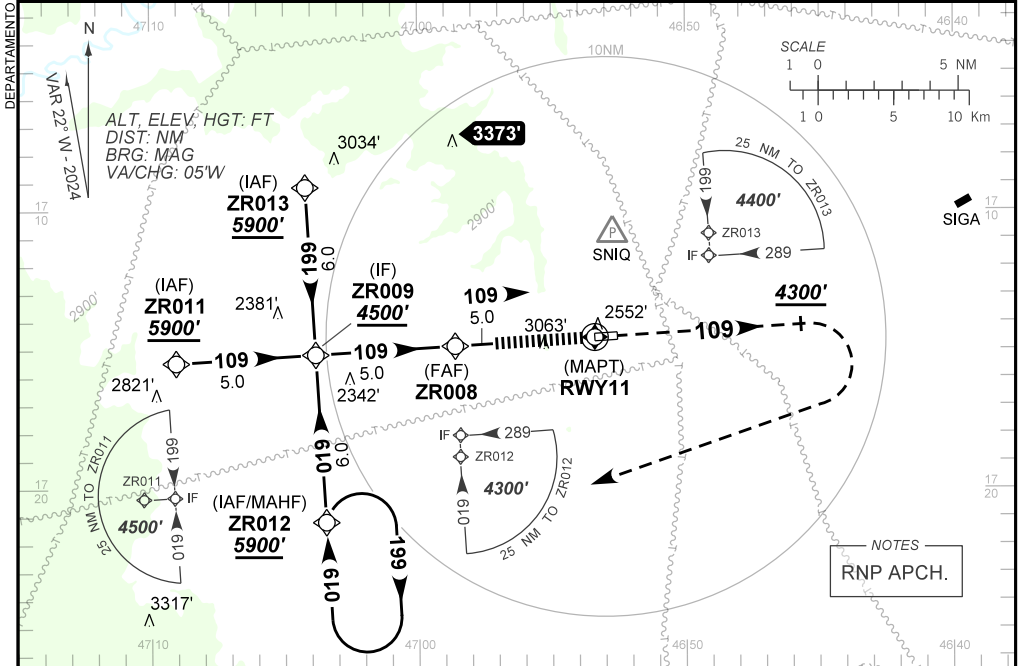
ATIS NIL	ERAA 132.35	APP NIL	TWR NIL	GNDC NIL
N/A	FINAL CRS 109°	FAF: 4430'	N/A	LNAV MDA / (OCH): 3400' / (1010')

APCH Perdida: Subir para **5900'**. Manter rumo **109** até **4300'**. Após, curvar à DIREITA direto ZR012 para espera.

Missed APCH: Climb to **5900'**. Maintain course **109** until **4300'**. After, turn RIGHT direct ZR012 for holding.

RMK: Prosseguir VMC a partir de 2.4NM do MAPT ou efetuar Aproximação Perdida.

Proceed VMC at 2.4NM to MAPT or perform the Missed Approach.



	ZR008	4.0	3.0	2.4	RWY 11	Ground Speed (KT)	090	110	130	150	170	190
	4430	4020	3627	3400	ALT	FPM	600	700	900		NA	
	2032	1622	1229	1010	(HGT)	FAF-MAPT	NIL					

STRAIGHT-IN	CAT	A	B	C	D	E	
	MDA / (OCH)	3400' / (1010')			NA		
LNNAV	ALS/NO ALS/ RVR ALS (m)	NIL / 5000 / NIL			NA		
CIRCLING	MDA / (OCH)	NA					
	VIS (m)						

CHANGES: NEW CHART.